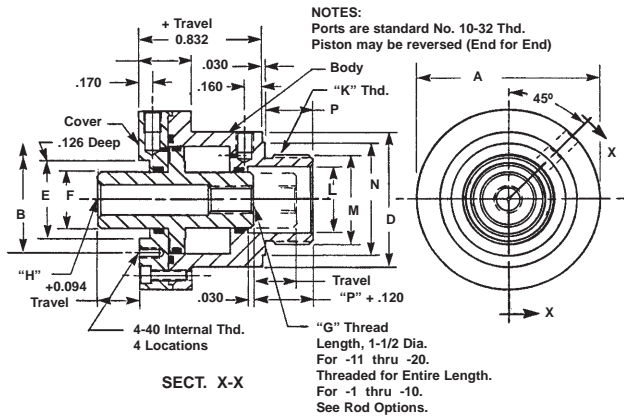


SHORT STROKE PNEUMATIC CYLINDERS - LO-Profile® SERIES A2-SP-TM

Double Acting-Double Ended Pistons with Internal Threads-Side Ported-Thread Mounted



SPECIFICATIONS:
SERVICE, PLANT AIR
M.O.P., 300 PSI
TEMPERATURE, -40°F to +250°F

MATERIALS:
BODY & COVER, ALUMINUM ALLOY
PISTON, ALUMINUM ALLOY
SEALS, BUNA "N" O RINGS
FASTENERS, ALLOY STEEL

NOTES:
Dimensions are nominal in U.S. CUSTOMARY specifications.

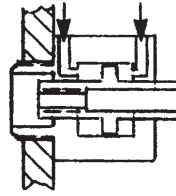
METRIC CYLINDERS are dimensionally equivalent with clearance holes, counterbores, threads & fasteners to metric specifications. See inside back cover for fastener conversion table. There is no added cost for METRIC CYLINDERS.

An air/oil mist unit is recommended for internal lubrication. Where such units are not practical, SERVICE KITS including seals & factory approved lube are available.

Cylinders may also be used in low pressure hydraulic and vacuum service.

Wrench flats may not be necessary if cylinders can be pressurized in the retracted or extended position while tightening the rod joint.

Inquiries regarding modifications to BASIC CYLINDERS are always welcome.



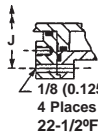
Pictorial

NOTE 1
C = 0.832 + Travel (A=D)

NOTE 2
Not available on Model 1044(-)

BASIC PART No.	O.D. A	BOLT CIRCLE B	FLANGE LENGTH C	BOSS DIA. D	RECESS DIA. E	ROD DIA. F	THD. G	HOLE H	BOLT CIRCLE J	THD. K	RECESS DIA. L	NOM. O.D. M	SHOULDER DIA. N	LENGTH P	PISTON DIA. (IN.)	NET PISTON AREA (SQ. IN.)
1044(-)	1.000	0.688	See note 1	1.000	0.375	0.250	4-40	0.129	See Note 2	1/2-20	0.313	0.500	0.750	0.375	0.450	0.110
1045(-)	1.500	0.750	0.563	1.000	0.500	0.375	10-32	0.206	1.250	3/4-16	0.500	0.750	0.938	0.438	0.700	0.275
1046(-)	2.000	1.188	0.563	1.500	0.875	0.625	5/16-24	0.344	1.750	1-14	0.750	1.000	1.250	0.500	1.200	0.824
1047(-)	2.500	1.688	0.563	2.000	1.375	0.625	5/16-24	0.344	2.250	1-14	0.750	1.000	1.250	0.500	1.700	1.963

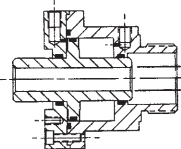
OPTIONAL MOUNTING STYLE



Thru Clearance Holes For 4-40 Screws
Add suffix -CL To The BASIC PART NO.
There is no added cost.
Not Available on 1044(-)

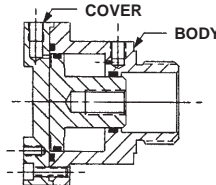
1/8 (0.125) Holes
4 Places
22-1/2° From Port

OPTIONAL PISTON

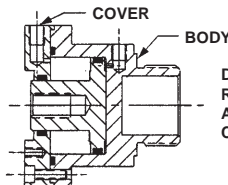


Piston with a thru hole
Add suffix -TH to the BASIC PART NO.
There is no added cost.

OPTIONAL CONFIGURATIONS

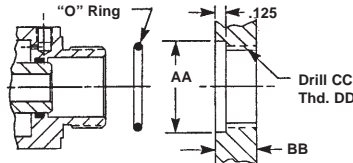


Double Acting - Single Ended Version
Rod Extends From The Body Side
Add suffix -SEB To The BASIC PART NO.
Cost is the BASE PRICE less 10%.



Double Acting - Single Ended Version
Rod Extends From The Cover Side
Add suffix -SEC To The BASIC PART NO.
Cost is the BASE PRICE less 10%.

MACHINING STANDARDS FOR BULKHEAD MOUNTING WITH "O" RING SEALING



FOR PART No.	SEAL RECESS AA	MIN. WALL BB	TAP DRILL CC	THD. DD	"O" RING SIZE
1044(-)	0.598	0.375	0.453	1/2-20	2-111
1045(-)	0.841	0.438	0.688	3/4-16	2-114
1046(-)	1.069	0.500	0.938	1-14	2-118
1047(-)	1.069	0.500	0.938	1-14	2-118

HOW TO ORDER BASIC CYLINDERS

A BASIC PART NUMBER consists of four digits followed by a dash number to indicate piston travel in increments of 1/10 (0.100) inch. Travel to -20 (2.000) is standard. Consult Factory for longer travel.

BASIC PART NUMBER

EXAMPLE = 1044-13

Indicates Piston Travel Of 13/10 (1.300) Inch
Four Digits From Table

HOW TO ORDER CYLINDERS WITH OPTIONS

Add options to the BASIC PART NO. as suffixes in any order.

EXAMPLE = 1044-6-TH

Thru hole piston
BASIC PART NO.

HOW TO ORDER CYLINDERS WITH STAINLESS STEEL PISTONS

Add the letter -S as a prefix to the BASIC PART NO.
Add 25% to the BASE PRICE.

EXAMPLE = S 1044-12

BASIC PART NO.
Stainless Piston Prefix

HOW TO ORDER ALL STAINLESS STEEL CYLINDERS

Add the letter -SS as a prefix to the BASIC PART NO.
Add 40% to the BASE PRICE.

EXAMPLE = SS-1044-20

BASIC PART NO.
ALL STAINLESS STEEL Cylinder

HOW TO ORDER METRIC CYLINDERS

A BASIC PART NO. FOR METRIC CYLINDERS consists of a four or five digit number from the table with a prefix "M" and a suffix to indicate travel in millimeters. See inside rear cover for piston travel conversions.

EXAMPLE = M-1044 - 10 mm

Travel in millimeters
From the table
Metric Prefix

HOW TO ORDER BUNA "N" SERVICE KITS

Specify the BASIC PART NO. followed by suffix -SK.

EXAMPLE = 1044 - 6 - SK

Indicates Buna "N" service kit
BASIC PART NO.

HOW TO ORDER CYLINDERS WITH VITON SEALS

Add suffix -V to the BASIC PART NO.
Add 10% to the BASE PRICE

EXAMPLE = 1044 - 8 - V

Indicates VITON Seals
BASIC PART NO.

HOW TO ORDER VITON SERVICE KITS

Specify the BASIC PART NO. followed by the suffix -VSK

EXAMPLE = 1044 - 9 - VSK

Indicates VITON service kit.
BASIC PART NUMBER

HOW TO ORDER CYLINDERS WITH BULKHEAD SEALS

Add suffix -OR to the BASIC PART NO.
Add 2% to the BASE PRICE

EXAMPLE = 1044 - 14 - OR

Bulkhead Seal
BASIC PART NO.

