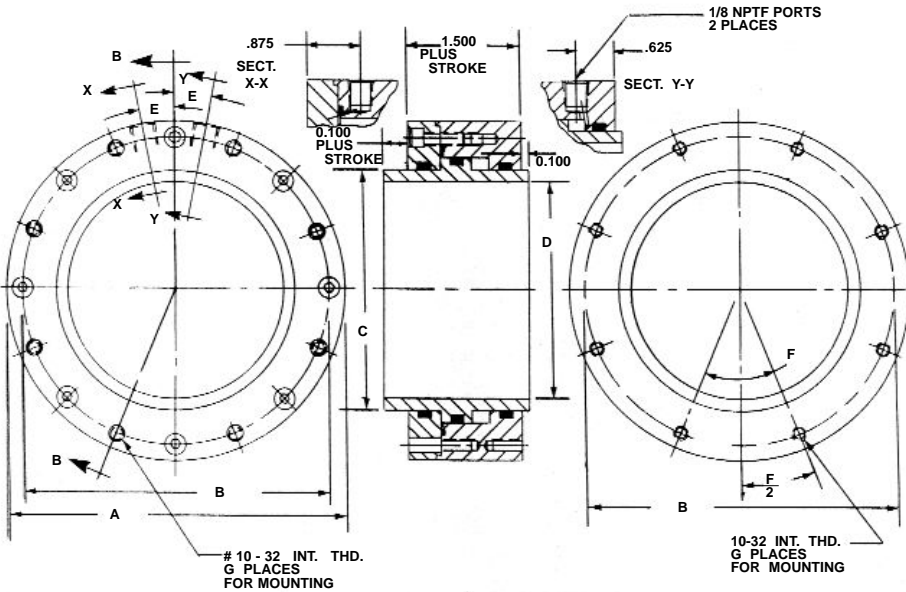


# SHORT STROKE PNEUMATIC CYLINDERS - LO-Profile® SERIES B-SP-EM

Double Acting - Double Ended Pistons - Large Hollow Hubs - Side Ported - Face Mounted



### NOTES:

Dimensions are nominal in U.S. Customary specifications.

METRIC CYLINDERS are dimensionally equivalent with clearance holes, counterbores, threads & fasteners to metric specifications. See inside rear cover for fastener conversion table. There is no added cost for METRIC CYLINDERS.

An air/oil mist unit is recommended for internal lubrication. Where such units are not practical, SERVICE KITS including seals & factory approved lubricant are available.

Cylinders may also be used in low pressure hydraulic service or with vacuum.

Inquiries regarding modifications to basic units are welcome.

### SPECIFICATIONS:

Service: Plant Air

M.O.P. 100 PSI

Temperature: -40 Deg.F to +250 Deg.F

### MATERIALS:

BODIES & COVERS: ALUMINUM ALLOY

PISTONS: ALUMINUM ALLOY

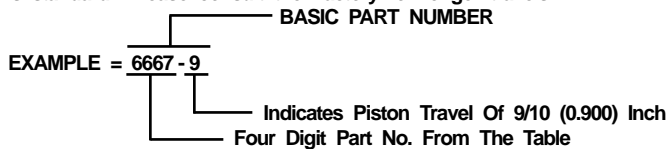
SEALS: VITON ORINGS

FASTENERS: ALLOY STEEL

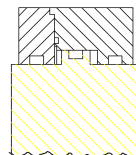
PART NO.	A O.D.	B B.C.	C ROD O.D.	D ROD BORE	E DEG	F DEG	G PLCS	H	J	K	L	PISTON O.D.	PISTON AREA	FORCE @100 PSI
6667-(-)	3.000	2.500	1.400	1.000	18	72	5	0.600	5	.021	.026	1.800	1.005	100
6668-(-)	3.500	3.000	1.900	1.500	15	60	6	1.100	6	.022	.031	2.300	1.320	132
6669-(-)	4.000	3.500	2.400	2.000	15	60	6	1.600	6	.0285	.039	2.800	1.634	163
6670-(-)	4.500	4.000	2.900	2.500	11.25	45	8	2.100	6	.038	.039	3.300	1.948	195
6671-(-)	5.000	4.500	3.400	3.000	11.25	45	8	2.600	8	.038	.039	3.800	2.262	226
6672-(-)	5.500	5.000	3.900	3.500	11.25	45	8	3.100	8	.046	.044	4.300	2.576	258
6673-(-)	6.000	5.500	4.400	4.000	11.25	45	8	3.600	8	.046	.044	4.800	2.891	289

### HOW TO ORDER BASIC CYLINDERS

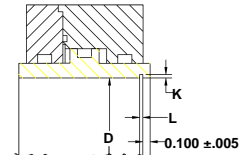
A BASIC PART NUMBER consists of a four digit number from the table followed by a dash number to indicate piston travel in increments of 1/10 (0.100) inch. Travel to -20 (2.000) inches is standard. Please consult the Factory for longer travels.



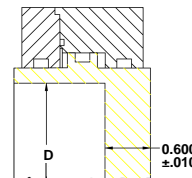
### PISTON OPTIONS



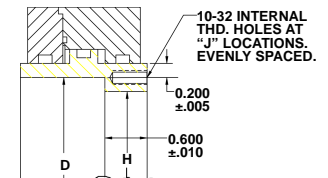
SOLID HUB PISTON.  
Add suffix -SH to the basic part no.  
Less 10% from base price.



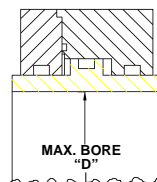
THRU HOLE WITH RETAINER GROOVE.  
Add suffix -RG to the basic part no.  
Add 5% to base price.



PISTON WITH CLOSED END.  
Add suffix -CE to basic part no.  
No change in price.



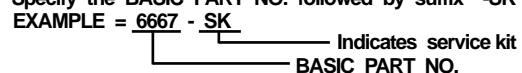
FLANGE END WITH INTERNAL THREADS.  
Add suffix -FE to basic part no.  
Add 15% to base price.



USER SPECIFIES THRU HOLE DIA.  
Add suffix -TH to part no, followed by nominal hole dia. (±.005). No change in price.

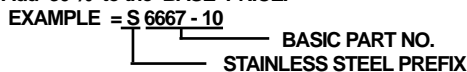
### HOW TO ORDER SERVICE KITS

Specify the BASIC PART NO. followed by suffix "-SK"



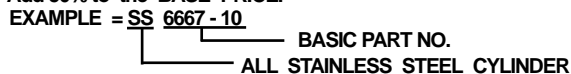
### HOW TO ORDER CYLINDERS WITH STAINLESS STEEL PISTONS

Add the letter "S" as a prefix to the BASIC PART NUMBER  
Add 30% to the BASE PRICE.



### HOW TO ORDER ALL STAINLESS STEEL CYLINDERS

Add the letters "SS" as a prefix to the BASIC PART NO.  
Add 50% to the BASE PRICE.



### HOW TO ORDER METRIC CYLINDERS

A BASIC PART NUMBER FOR METRIC CYLINDERS consists of a four digit number from the table with a prefix "M" and a suffix to indicate travel in millimeters.

