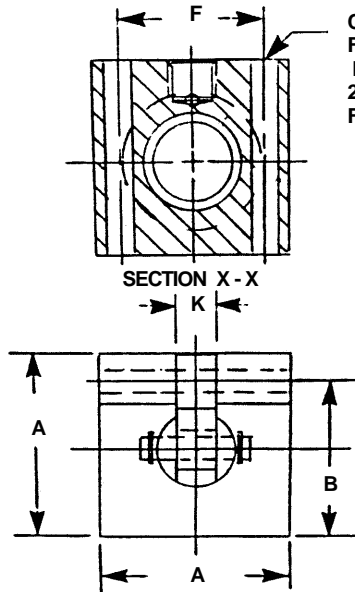
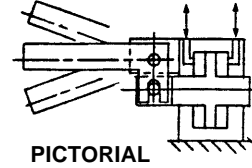


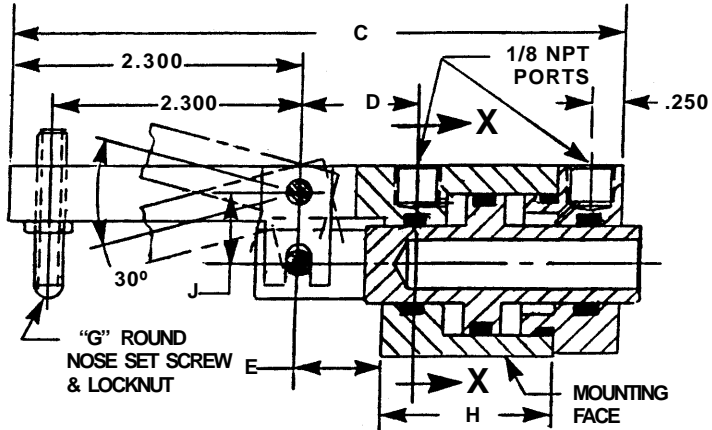
# FINGER CLAMPS, LO-Profile® PNEUMATIC LINEAR ACTUATORS

## Double Acting - Double Ended - Side Ported - Side Mounted

**SPECIFICATIONS:**  
 PLANT AIR SERVICE  
 M.O.P. 150 PSI  
 TEMP. -40 TO 250 DEG F.  
**MATERIALS-**  
 BODY & COVER, ALUM. ALLOY  
 PISTON, ST. STL.  
 FINGER, STEEL  
 SEALS, BUNA "N"  
 FASTENERS, ALLOY STL.



CL DRILLED FOR #10-32 I.S.H.C.S. 2 PLACES FOR MOUNTING



| PART NO. | A     | B     | C     | D     | E     | F     | G     | H     | J     | K     | TORQUE (INCH LBS) (@ 100 PSI) | FORCE @ ADJ. SCREW |
|----------|-------|-------|-------|-------|-------|-------|-------|-------|-------|-------|-------------------------------|--------------------|
| 6583     | 1.375 | 1.138 | 4.680 | 0.840 | 0.590 | 1.000 | 8-32  | 1.290 | 0.450 | 0.250 | 21.4                          | 10.7 LB.           |
| 6584     | 1.500 | 1.310 | 4.840 | 0.940 | 0.690 | 1.150 | 10-32 | 1.350 | 0.560 | 0.313 | 37.7                          | 18.9 LB.           |
| 6585     | 1.750 | 1.555 | 4.944 | 0.980 | 0.730 | 1.250 | 10-32 | 1.414 | 0.680 | 0.375 | 74.8                          | 37.4 LB.           |
| 6586     | 2.000 | 1.800 | 5.078 | 1.050 | 0.800 | 1.375 | 10-32 | 1.478 | 0.800 | 0.375 | 125.0                         | 62.5 LB.           |

**HOW TO ORDER CYLINDERS WITH INTERNAL MOUNTING THDS.**  
 ADD -ITM TO THE BASIC PART NUMBER AS A SUFFIX.  
 THERE IS NO ADDED COST  
 EXAMPLE = 6583 - ITM



**HOW TO ORDER METRIC VERSIONS.**  
 SEE GENERAL NOTE FOR DESCRIPTION OF A METRIC VERSION.  
 A BASIC PART NO. FOR A METRIC VERSION CONSISTS OF  
 ADDING THE PREFIX "M" TO A PART NO. FROM THE TABLE  
 THERE IS NO ADDED COST.  
 EXAMPLE = M 6583

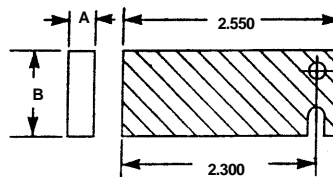


**HOW TO ORDER SERVICE KITS.**  
 SPECIFY THE BASIC PART NO. FOLLOWED BY SUFFIX -SK  
 EXAMPLE = 6583 - SK



**HOW TO ORDER BLANK FINGERS.**  
 FINGER NO. FOR UNIT      DIMENSIONS

|      |      | A     | B     |
|------|------|-------|-------|
| 6611 | 6583 | 0.250 | 0.820 |
| 6612 | 6584 | 0.313 | 0.925 |
| 6613 | 6585 | 0.375 | 1.053 |
| 6614 | 6586 | 0.375 | 1.175 |



**GENERAL NOTES:**  
 DIMENSIONS ARE NOMINAL IN U.S. CUSTOMARY UNITS.  
 METRIC VERSIONS ARE DIMENSIONALLY EQUIVALENT  
 EXCEPT FOR CONVERSION IN MOUNTING DETAILS WHERE  
 FASTENERS, THREADS, CLEARANCE HOLES AND COUNTER-  
 BORES ARE TO METRIC STANDARDS.  
 PLEASE SEE INSIDE REAR COVER FOR A TABLE OF U.S.  
 CUSTOMARY TO METRIC FASTENER CONVERSION.  
 THERE IS NO ADDED COST FOR THIS METRIC VERSION.  
 ALL INQUIRIES REGARDING OTHER MODIFICATIONS TO  
 STANDARD CYLINDERS ARE WELCOME.

**TYPICAL PROFILE MODIFICATIONS:**

