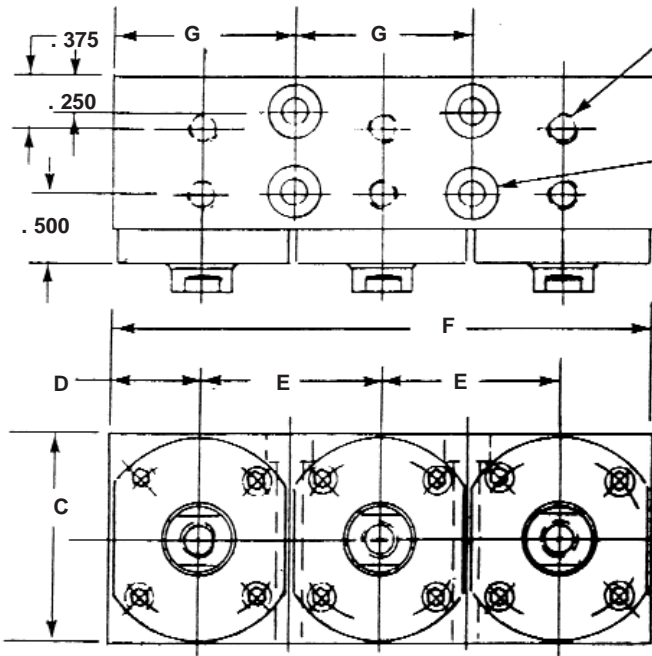
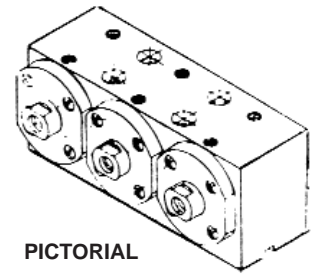


MODULAR PNEUMATIC CYLINDERS, LOPROfile® SERIES A-DA-SE-TMC-SP-SM
 Double Acting-Single Ended Pistons-Triple Modular Configuration-Side Ported-Side Mounted



10-32 PORTS
 FITTINGS FOR 1/8 I.D.
 TUBING ARE SUPPLIED.
 6 PLACES

CL. DRILLED & C'BORED
 FOR " H " I.S.H.C.S.
 4 PLACES

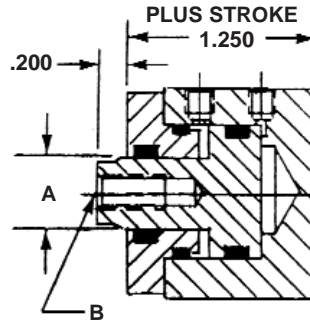


PICTORIAL

SPECIFICATIONS:

SERVICE: PLANT AIR
 M.O.P. 150 P.S.I.

MATERIALS:
 BODY, ALUMINUM ALLOY
 COVER, ALUMINUM ALLOY
 PISTON, STAINLESS STEEL
 FASTENERS, ALLOY STEEL
 SEALS, "O" RINGS



NOTES:

DIMENSIONS ARE NOMINAL IN U.S. UNITS. METRIC VERSIONS ARE DIMENSIONALLY EQUIVALENT EXCEPT FOR CONVERSION IN MOUNTING DETAILS WHERE FASTENERS, THREADS, CLEARANCE HOLES AND COUNTER-BORES ARE TO METRIC STANDARDS, PLEASE SEE INSIDE REAR COVER FOR A TABLE OF U.S. CUSTOMARY TO METRIC FASTENER CONVERSION. THERE IS NO ADDED COST FOR THIS METRIC VERSION. STROKES TO 10/10 (1 INCH) IS STANDARD. ALL INQUIRIES REGARDING MODIFICATIONS ARE WELCOME. MODIFICATIONS MIGHT INCLUDE LONGER STROKES, DOUBLE ENDED PISTONS, ALTERNATE MATERIALS, ADDITIONAL SIZES.

PART NO.	A	B	C	D	E	F	G	H	PISTON HEAD DIA. (IN.)	PISTON EXTEND AREA (SQ.IN.)	PISTON RETR. AREA (SQ.IN.)
S6517(-)	0.250	4-40	1.000	0.430	0.860	2.580	0.860	10-32	0.450	0.159	0.100
S6518(-)	0.375	10-32	1.250	0.550	1.100	3.300	1.100	10-32	0.700	0.385	0.275
S6519(-)	0.500	1/4-28	1.500	0.650	1.300	3.900	1.300	10-32	0.950	0.709	0.513
S6520(-)	0.625	5/16-24	1.750	0.830	1.660	4.980	1.660	1/4-28	1.200	1.131	0.824

REFERENCE: DATA SHEET 2004-4 FOR SINGLE CYLINDER CONFIGURATION.
 DATA SHEET 2004-5 FOR DUAL MODULAR COMBINATION.

HOW TO ORDER BASIC MODULES

A BASIC PART NUMBER consists of the letter "S" with four digits followed by a dash number to indicate piston stroke in increments of 1/10 (0.100) inch.

EXAMPLE: **S6517 - 6**
 BASIC PART NUMBER
 Indicates piston stroke of 6/10 inch.
 Letter and four digit no. from the table.

HOW TO ORDER MODULES WITH OPTIONS

Add options to the BASIC PART NUMBER as suffixes.

EXAMPLE: **S6517 - 6 - TI**
 Trepan inlet option.
 BASIC PART NUMBER

HOW TO ORDER A METRIC VERSION

A BASIC PART NUMBER consists of a number from the table with a prefix "M" and a suffix to indicate piston stroke in millimeters.

EXAMPLE: **M S6517 - 10mm**
 Stroke in millimeters
 From the table
 Metric Prefix

HOW TO ORDER SERVICE KITS

Specify a BASIC PART NO. followed by the suffix "SK"

EXAMPLE: **S6517 - SK**
 Indicates service kit only
 BASIC PART NUMBER

OPTIONAL INLETS:

TREPANNED INLETS for pad mounting.
 Add suffix "TI" to THE BASIC PART NO.
 ADD 10% to the BASIC PRICE.

