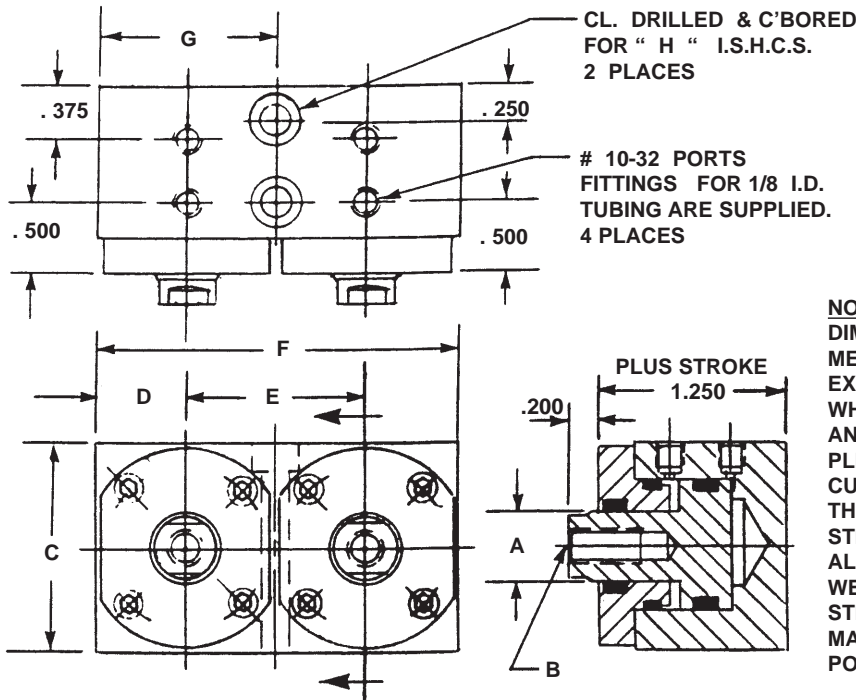
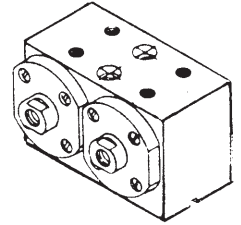


MODULAR PNEUMATIC CYLINDERS, LOPROfile® SERIES A-DA-SE-DMC-SP-SM
 Double Acting-Single Ended Pistons-Dual Modular Configuration-Side Ported-Side Mounted



SPECIFICATIONS:
 SERVICE: PLANT AIR
 M.O.P. 150 P.S.I.
MATERIALS:
 BODY, ALUMINUM ALLOY
 COVER, ALUMINUM ALLOY
 PISTON, STAINLESS STEEL
 FASTENERS, ALLOY STEEL
 SEALS, "O" RINGS



PICTORIAL

NOTES:
 DIMENSIONS ARE NOMINAL IN U.S. CUSTOMARY UNITS. METRIC VERSIONS ARE DIMENSIONALLY EQUIVALENT EXCEPT FOR CONVERSION IN MOUNTING DETAILS WHERE FASTENERS, THREADS, CLEARANCE HOLES AND COUNTER-BORES ARE TO METRIC STANDARDS, PLEASE SEE INSIDE REAR COVER FOR A TABLE OF U.S. CUSTOMARY TO METRIC FASTENER CONVERSION. THERE IS NO ADDED COST FOR THIS METRIC VERSION. STROKES TO 10/10 (1 INCH) IS STANDARD. ALL INQUIRIES REGARDING MODIFICATIONS ARE WELCOME. MODIFICATIONS MIGHT INCLUDE LONGER STROKES, DOUBLE ENDED PISTONS, ALTERNATE MATERIALS, ADDITIONAL SIZES, AND VARIOUS PORTING AND MOUNTING COMBINATIONS.

PART NO.	A	B	C	D	E	F	G	H	PISTON	PISTON	PISTON
									HEAD DIA. (IN.)	EXTEND AREA (SQ.IN.)	RETR. AREA (SQ.IN.)
S6513(-)	0.250	4-40	1.000	0.430	0.860	1.720	0.860	10-32	0.450	0.159	0.110
S6514(-)	0.375	10-32	1.250	0.550	1.100	2.200	1.100	10-32	0.700	0.385	0.275
S6515(-)	0.500	1/4-28	1.500	0.650	1.300	2.600	1.300	10-32	0.950	0.709	0.513
S6516(-)	0.625	5/16-24	1.750	0.830	1.660	3.320	1.660	1/4-28	1.200	1.131	0.824

REFERENCE: DATA SHEET 2004-4 FOR SINGLE CYLINDER CONFIGURATION.
 DATA SHEET 2004-6 FOR TRIPLE MODULAR COMBINATION.

HOW TO ORDER BASIC MODULES

A BASIC PART NUMBER consists of the letter "S" with four digits followed by a dash number to indicate piston stroke in increments of 1/10 (0.100) inch.

EXAMPLE: S6513 - 6
 ————— BASIC PART NUMBER
 ————— Indicates piston stroke of 6/10 inch.
 ————— Letter and four digit no. from the table.

HOW TO ORDER MODULES WITH OPTIONS

Add options to the BASIC PART NUMBER as suffixes.

EXAMPLE: S6513 - 6 - TI
 ————— Trepan inlet option.
 ————— BASIC PART NUMBER

HOW TO ORDER A METRIC VERSION

A BASIC PART NUMBER consists of a number from the table with a prefix "M" and a suffix to indicate piston stroke in millimeters.

EXAMPLE: M S6513 - 10mm
 ————— Stroke in millimeters
 ————— From the table
 ————— Metric Prefix

HOW TO ORDER SERVICE KITS

Specify a BASIC PART NO. followed by the suffix "SK"

EXAMPLE: S6513 - SK
 ————— Indicates service kit only
 ————— BASIC PART NUMBER

OPTIONAL INLETS:

TREPANED INLETS for pad mounting.
 Add suffix "TI" to THE BASIC PART NO.
 ADD 10% to the BASIC PRICE.

