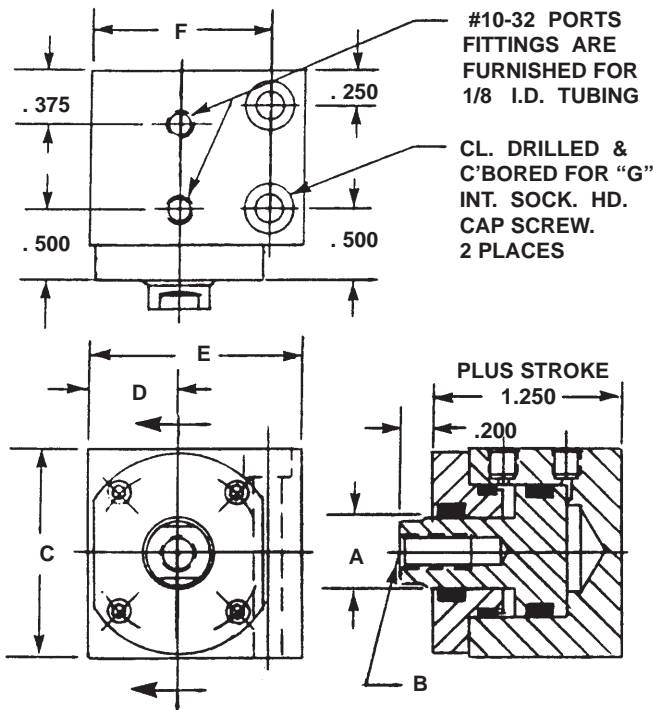
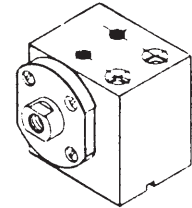


MODULAR PNEUMATIC CYLINDERS, LOPROfile® SERIES A-DA-SE-SMC-SP-SM
 Double Acting-Single Ended Pistons-Single Modular Configuration-Side Ported-Side Mounted



SPECIFICATIONS:
 SERVICE: PLANT AIR
 M.O.P. 150 P.S.I.
 MATERIALS:
 BODY, ALUMINUM ALLOY
 COVER, ALUMINUM ALLOY
 PISTON, STAINLESS STEEL
 FASTENERS, ALLOY STEEL
 SEALS, "O" RINGS



PICTORIAL

NOTES:
 DIMENSIONS ARE NOMINAL IN U.S. CUSTOMARY UNITS.
 METRIC VERSIONS ARE DIMENSIONALLY EQUIVALENT
 EXCEPT FOR CONVERSION IN MOUNTING DETAILS
 WHERE FASTENERS, THREADS, CLEARANCE HOLES
 AND COUNTER-BORES ARE TO METRIC STANDARDS,
 PLEASE SEE INSIDE REAR COVER FOR A TABLE OF U.S.
 CUSTOMARY TO METRIC FASTENER CONVERSION.
 THERE IS NO ADDED COST FOR THIS METRIC VERSION.
 STROKES TO 10/10 (1 INCH) IS STANDARD.
 ALL INQUIRIES REGARDING MODIFICATIONS ARE
 WELCOME. MODIFICATIONS MIGHT INCLUDE LONGER
 STROKES, DOUBLE ENDED PISTONS, ALTERNATE
 MATERIALS, ADDITIONAL SIZES, AND VARIOUS
 PORTING AND MOUNTING COMBINATIONS.

PART NO.	DIMENSIONS (IN.)							PISTON PISTON PISTON		
	A	B	C	D	E	F	G	HEAD DIA. (IN.)	EXTEND AREA (SQ.IN.)	RETR. AREA (SQ.IN.)
S6509(-)	0.250	4-40	1.000	0.430	1.100	0.860	10-32	0.450	0.159	0.110
S6510(-)	0.375	10-32	1.250	0.550	1.350	1.100	10-32	0.700	0.385	0.275
S6511(-)	0.500	1/4-28	1.500	0.650	1.550	1.300	10-32	0.950	0.709	0.513
S6512(-)	0.625	5/16-24	1.750	0.830	1.950	1.660	1/4-28	1.200	1.131	0.824

REFERENCE: DATA SHEET 2004-5 FOR DUAL MODULAR COMBINATION.
 DATA SHEET 2004-6 FOR TRIPLE MODULAR COMBINATION.

HOW TO ORDER BASIC MODULES

A BASIC PART NUMBER consists of the letter "S" with four digits followed by a dash number to indicate piston stroke in increments of 1/10 (0.100) inch.

EXAMPLE: **S6509 - 6**
 S6509 - BASIC PART NUMBER
 6 - Indicates piston stroke of 6/10 inch.
 Letter and four digit no. from the table.

HOW TO ORDER MODULES WITH OPTIONS

Add options to the BASIC PART NUMBER as suffixes.

EXAMPLE: **S6509 - 6 - TI**
 S6509 - BASIC PART NUMBER
 - 6 - Trepan inlet option.

HOW TO ORDER A METRIC VERSION

A BASIC PART NUMBER consists of a number from the table with a prefix "M" and a suffix to indicate piston stroke in millimeters.

EXAMPLE: **M S6509 - 10mm**
 M - Metric Prefix
 S6509 - From the table
 - 10mm - Stroke in millimeters

HOW TO ORDER SERVICE KITS

Specify a BASIC PART NO. followed by the suffix "SK"

EXAMPLE: **S6509 - SK**
 S6509 - BASIC PART NUMBER
 - SK - Indicates service kit only

OPTIONAL INLETS:

TREPAN INLETS for pad mounting.
 Add suffix "TI" to THE BASIC PART NO.
 ADD 10% to the BASIC PRICE.

