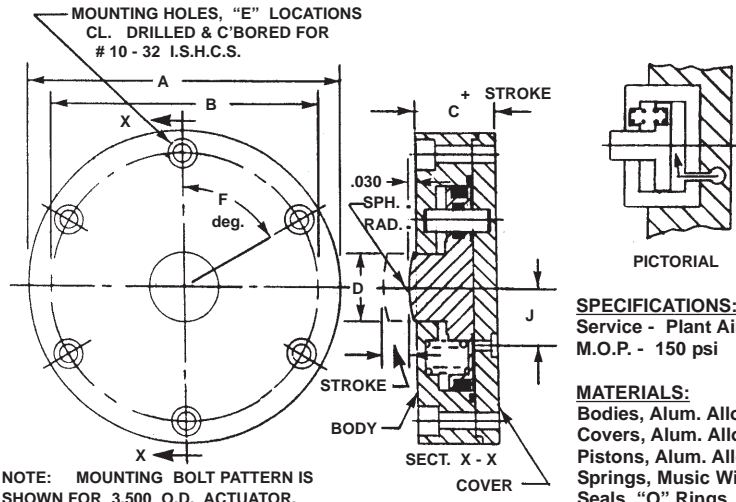


SHORT STROKE PNEUMATIC ACTUATORS, LOPROfile® SERIES B-SA-SPR-C-ETI-PM
 Single Acting-Spring Return-Cylindrical-Single Ended Pistons-End Trepan Inlets-Pocket Mounted

PRODUCT DETAIL

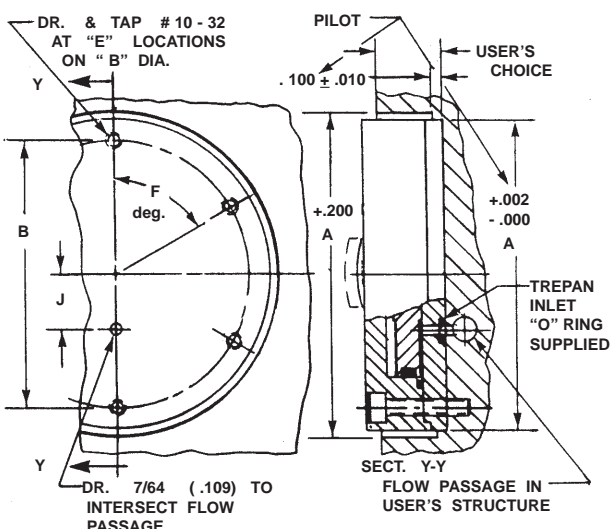


NOTE: MOUNTING BOLT PATTERN IS SHOWN FOR 3.500 O.D. ACTUATOR. SEE TABLE FOR OTHER SIZES.

SPECIFICATIONS:
 Service - Plant Air
 M.O.P. - 150 psi

MATERIALS:
 Bodies, Alum. Alloy
 Covers, Alum. Alloy
 Pistons, Alum. Alloy
 Springs, Music Wire
 Seals, "O" Rings
 Fasteners, Alloy Stl.

SUGGESTED MOUNTING DETAIL



BASIC PART NUMBER	PISTON								PISTON DIA. (IN.)	PISTON AREA (SQ. IN.)	
	A	B	C	D	E	F	G	H			
6405 - ()	3.000	2.500	0.681	0.625	5	72	5/16-24	0.500	0.625	1.800	2.545
6406 - ()	3.500	3.000	0.775	0.750	6	60	3/8-24	0.563	0.625	2.300	4.155
6407 - ()	4.000	3.500	0.775	0.750	6	60	3/8-24	0.563	0.625	2.800	6.158
6408 - ()	4.500	4.000	0.900	0.750	8	45	3/8-24	0.563	1.000	3.300	8.553
6409 - ()	5.000	4.500	0.900	0.750	8	45	3/8-24	0.563	1.000	3.800	11.341
6410 - ()	5.500	5.000	0.900	1.000	8	45	1/2-20	0.750	1.200	4.300	14.522
6411 - ()	6.000	5.500	0.900	1.000	8	45	1/2-20	0.750	1.400	4.800	18.096

HOW TO ORDER BASIC ACTUATORS

A BASIC PART NO. consists of a four digit number followed by a dash number to indicate stroke in increments of 1/10 (0.100)inch. Strokes to -10 (1.000) inches are standard. Please consult the factory for longer strokes.

EXAMPLE= 6405 - 8
 - BASIC PART NUMBER
 - Indicates piston stroke of 8/10 (0.800) inch
 - Four digit number from the table

HOW TO ORDER ACTUATORS WITH OPTIONS

Add options to the BASIC PART NO. as suffixes in any order.

EXAMPLE= 6405 - 8 - ETW
 - External rod thread option.
 - BASIC PART NUMBER

HOW TO ORDER ACTUATORS WITH STAINLESS STEEL PISTONS

Add the letter "S" as a prefix to a BASIC PART NUMBER. Add 25% to the BASE PRICE.

EXAMPLE= S - 6405 - 8
 - BASIC PART NUMBER
 - Stainless steel piston option.

HOW TO ORDER ALL STAINLESS STEEL ACTUATORS

Add the letters "SS" as a prefix to a BASIC PART NUMBER. Add 40% to the BASE PRICE.

EXAMPLE= SS - 6405 - 10
 - BASIC PART NUMBER
 - All stainless steel actuator option.

HOW TO ORDER METRIC VERSIONS

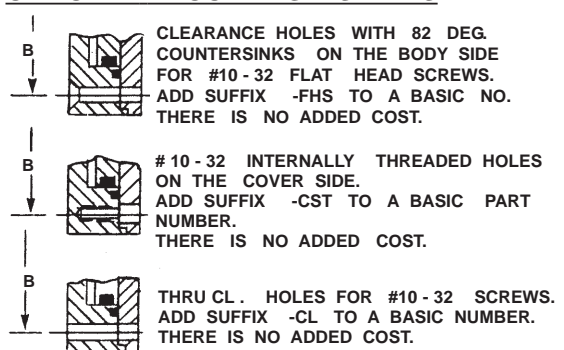
A BASIC PART NUMBER FOR METRIC MODIFICATIONS consists of a four digit number from the table with a prefix "M" and a suffix to define stroke in millimeters. Please see inside rear cover for standard piston stroke conversions.

EXAMPLE= M - 6405 - 10mm
 - Stroke in millimeters.
 - From the table.
 - Metric prefix.

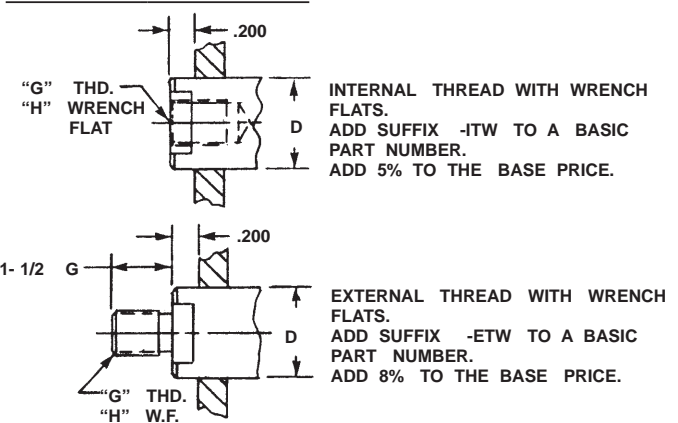
HOW TO ORDER SERVICE KITS

Specify the BASIC PART NUMBER followed by the suffix "-SK".

OPTIONAL MOUNTING STYLES



OPTIONAL ROD ENDS



GENERAL NOTES:

Dimensions are nominal in U.S. CUSTOMARY SPECIFICATIONS. METRIC VERSIONS are dimensionally equivalent except for conversion in mounting details where fasteners, threads, clearance holes & counterbores are to METRIC standards. Please see inside rear cover for fastener conversion table. There is no added cost for this metric conversion. An AIR/OIL mist unit is recommended for internal lubrication. Where such units are not practical, SERVICE KITS including seals and factory approved lubricant are offered. Please see "HOW TO ORDER SERVICE KITS"

SPRING FORCE NOTES:

Spring force for BASIC ACTUATORS is sufficient to fully retract pistons. Higher spring force may be necessary for loads attached to rod ends. Please consult the FACTORY with special spring requirements.

