

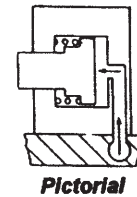
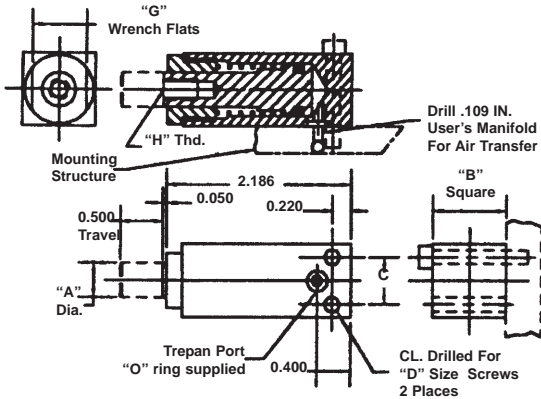
SHORT STROKE PNEUMATIC CYLINDERS - LO-PROFILE® SERIES A-SPR-RAMS
 Single Acting-Spring Retracted-Single Ended Pistons-Side Trepanned Inlets-Side Mounted

APPLICATIONS

LOW COST RAMS FOR POWER CLAMPING AND WORK HOLDING IN JIGS AND FIXTURES USING PLANT AIR AS A SOURCE OF PRESSURE.

BASIC MANIFOLD MOUNTED VERSION

DESCRIPTION: AIR PRESSURE EXTENDS THE PISTON FOR CLAMPING AND HOLDING. WHEN PRESSURE IS RELEASED, THE PISTON CAN BE RETRACTED BY A SPRING. BODIES INCORPORATE A TREPANED GROOVE WITH AN "O" RING FACE SEAL FOR PORTING DIRECTLY TO THE USER'S MOUNTING STRUCTURE. FEED LINES AND FITTINGS ARE LOCATED IN THIS MOUNTING STRUCTURE BELOW THE MOUNTING PLANE TO CLEAR THE WORK AREA AND TO AVOID ACCIDENTAL DAMAGE TO SUPPLY LINES.

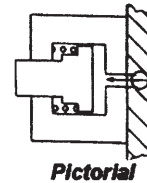
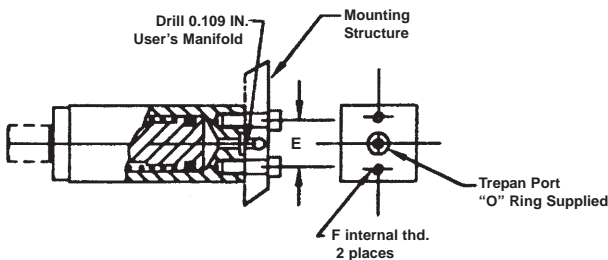


SPECIFICATIONS:
 SERVICE, PLANT AIR
 M.O.P., 150 PSI
 MAT'L., ALUM. ALLOY & ST. STL.

BASIC PART No.	A (IN.)	B (IN.)	C (IN.)	Mounting Screws D	E (IN.)	Int. Threads F	Wrench Flats G	Thread In Piston H	PISTON AREA (SQ. IN.)	NET FORCE @80 PSI (LB.)
5709-5	0.313	0.750	0.480	6-32X7/8	0.532	4-40	0.500	10-32	0.196	10.2
5710-5	0.438	0.875	0.560	8-32X1	0.600	4-40	0.625	1/4-20	0.307	18.4
5711-5	0.438	1.000	0.600	10-32X1-1/4	0.660	8-32	0.750	1/4-20	0.442	27.6
5712-5	0.562	1.125	0.725	10-32X1-3/8	0.750	8-32	0.875	1/4-20	0.601	41.3

OPTIONAL END MOUNTING

DESCRIPTION: Same as the face mounted version except mounting & porting is at the rear face.



HOW TO ORDER THE END MOUNTED OPTION:
 ADD THE SUFFIX -EM TO BASIC PART NUMBER.

EXAMPLE: 5709 - 5 - EM
 END MOUNTING SUFFIX
 BASIC PART NO.

OPTIONAL NOSE FITTINGS

DESCRIPTION: Nose options thread directly into the tapped hole in the piston.

VEE NOSE OPTION (SUFFIX -VN)



FLAT NOSE OPTION (SUFFIX -FN)



RADIUS NOSE OPTION (SUFFIX -RN)



HOW TO ORDER THE NOSE OPTION:
 ADD 10% TO THE BASE PRICE AND SPECIFY THE OPTION AS AN ADDITIONAL SUFFIX TO A BASIC PART NUMBER.

EXAMPLE: 5709 - 5 - VN
 VEE NOSE OPTION
 BASIC PART NO.

NOTE: Parts are shipped with basic internal thread in the piston if no option is specified.

