

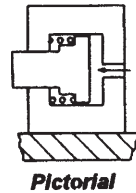
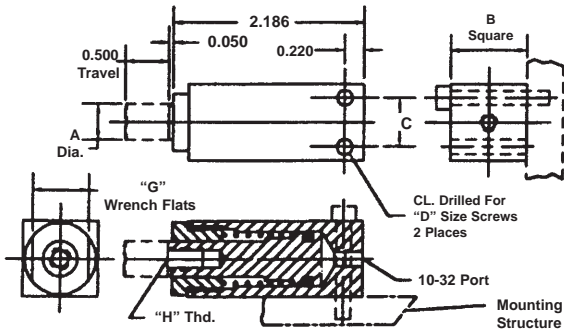
SHORT STROKE PNEUMATIC CYLINDERS - LO-Profile® SERIES A-SPR-RAMS
 Single Acting-Spring Retracted-Single Ended Pistons-End Ported-Side Mounted

APPLICATIONS

LOW COST RAMS FOR POWER CLAMPING AND WORK HOLDING IN JIGS AND FIXTURES USING PLANT AIR AS A SOURCE OF PRESSURE.

BASIC MANIFOLD MOUNTED VERSION

DESCRIPTION: AIR PRESSURE EXTENDS THE PISTON FOR CLAMPING AND HOLDING. WHEN PRESSURE IS RELEASED, THE PISTON CAN BE RETRACTED BY A SPRING. MOUNTING IS TO THE LOWER FACE AND PORTING IS AT THE REAR FACE.

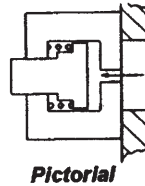
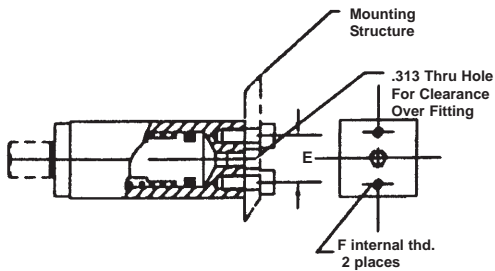


SPECIFICATIONS:
 SERVICE, Plant Air
 M.O.P., 150 PSI
 MAT'L., ALUM. ALLOY

BASIC PART No.	A (IN.)	B (IN.)	C (IN.)	Mounting Screws D	E (IN.)	Int. Threads F	Wrench Flats G	Thread In Piston H	PISTON AREA (SQ. IN.)	FORCE @80 PSI (LB.)
5701-5	0.313	0.750	0.480	6-32X7/8	0.532	4-40	0.500	10-32	0.196	10.2
5702-5	0.438	0.875	0.560	8-32X1	0.600	4-40	0.625	1/4-20	0.307	18.4
5703-5	0.438	1.000	0.600	10-32X1-1/4	0.660	8-32	0.760	1/4-20	0.442	27.6
5704-5	0.562	1.125	0.725	10-32X1-3/8	0.750	8-32	0.875	1/4-20	0.601	41.3

OPTIONAL END MOUNTING

DESCRIPTION: Same as the face mounted version except mounting & porting is at the rear face.

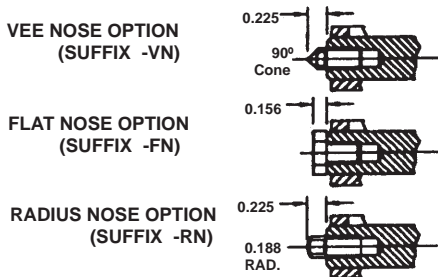


HOW TO ORDER THE END MOUNTED OPTION:
 ADD THE SUFFIX -EM TO BASIC PART NUMBER.

EXAMPLE: 5701 - 5 - EM
 END MOUNTING SUFFIX
 BASIC PART NO.

OPTIONAL PRELOAD PISTON

DESCRIPTION: Nose options thread directly into the tapped hole in the piston.



HOW TO ORDER THE NOSE OPTION:
 ADD 10% TO THE BASE PRICE AND SPECIFY THE OPTION AS AN ADDITIONAL SUFFIX TO A BASIC PART NUMBER.

EXAMPLE: 5701 - 5 - VN
 VEE NOSE OPTION
 BASIC PART NO.

NOTE: Parts are shipped with the basic 1/4-20 internal thread in the piston if no option is specified.

