

# SHORT STROKE PNEUMATIC CYLINDERS - LO-Profile® SERIES A-MR-RAMS

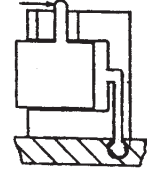
Single Acting-Single Ended Manual Reset Pistons-Side Trepanned Inlets-Side Mounted

## APPLICATIONS

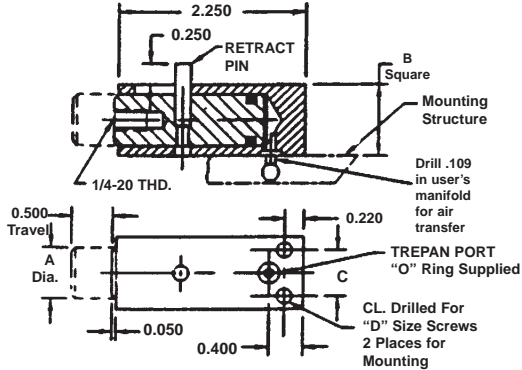
LOW COST RAMS FOR POWER CLAMPING AND WORK HOLDING IN JIGS AND FIXTURES USING PLANT AIR AS A SOURCE OF PRESSURE.

## BASIC MANIFOLD MOUNTED VERSION

DESCRIPTION: AIR PRESSURE EXTENDS THE PISTON FOR CLAMPING AND HOLDING. WHEN PRESSURE IS RELEASED, THE PISTON CAN BE RETRACTED MANUALLY. BODIES INCORPORATE A TREPANDED GROOVE WITH AN "O" RING FACE SEAL FOR PORTING DIRECTLY TO THE USER'S MOUNTING STRUCTURE. FEED LINES AND FITTINGS ARE LOCATED IN THIS MOUNTING STRUCTURE BELOW THE MOUNTING PLANE TO CLEAR THE WORK AREA AND TO AVOID ACCIDENTAL DAMAGE TO SUPPLY LINES.



Pictorial

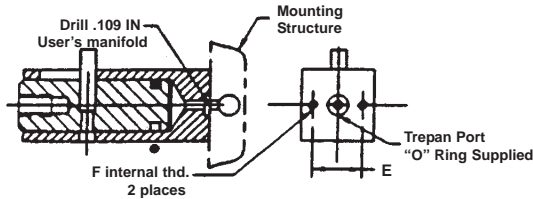


BASIC PART No.	A (IN.)	B (IN.)	C (IN.)	Mounting Screws D	E (IN.)	Int. Threads F	PISTON AREA (SQ.IN.)	FORCE @80 PSI (LB.)
6090-5	0.500	0.750	0.480	6-32X7/8	0.532	4-40	0.196	15
6091-5	0.625	0.875	0.560	8-32X1	0.600	4-40	0.307	25
6092-5	0.750	1.000	0.600	10-32X1-1/4	0.660	8-32	0.442	35
6093-5	0.875	1.125	0.725	10-32X1-3/8	0.750	8-32	0.601	50

SPECIFICATIONS: SERVICE, PLANT AIR  
M.O.P., 150 PSI  
MAT'L., ALUM. ALLOY

## OPTIONAL END MOUNTING

DESCRIPTION: Same as the manifold version except mounting and porting is at the aft end. Internal threads and provisions for face sealing is on the aft face of ram.

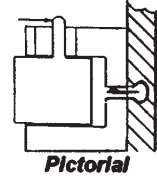


HOW TO ORDER THE END MOUNTED OPTION:  
ADD THE SUFFIX -EM TO BASIC PART NUMBER.

EXAMPLE: 6090 - 5 - EM

END MOUNTING SUFFIX

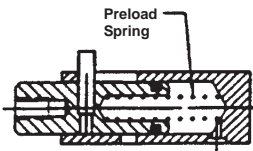
BASIC PART NO.



Pictorial

## OPTIONAL PRELOAD PISTON

DESCRIPTION: A spring is contained inside the piston to provide a small mechanical force for holding a work piece in proper position before applying pressure.



HOW TO ORDER THE PRELOAD OPTION:  
ADD 10% TO THE BASE PRICE AND ADD THE SUFFIX -PP AS AN ADDITIONAL SUFFIX TO A BASIC PART NUMBER.

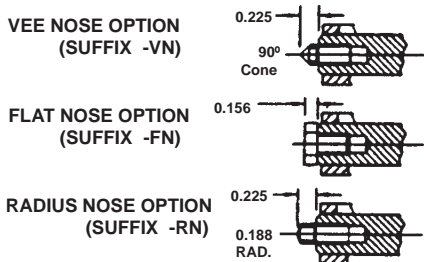
EXAMPLE: 6090 - 5 - PP

PISTON PRELOAD SUFFIX

BASIC PART NO.

## OPTIONAL NOSE FITTINGS

DESCRIPTION: Nose options thread directly into the tapped hole in the piston.



HOW TO ORDER THE NOSE OPTION:  
ADD 10% TO THE BASE PRICE AND SPECIFY THE OPTION AS AN ADDITIONAL SUFFIX TO A BASIC PART NUMBER.

EXAMPLE: 6090 - 5 - VN

VEE NOSE OPTION

BASIC PART NO.

NOTE: Parts are shipped with the basic 1/4-20 internal thread in the piston if no option is specified.