

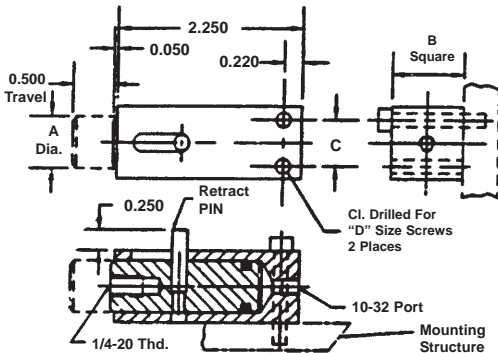
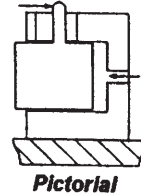
SHORT STROKE PNEUMATIC CYLINDERS - LO-Profile® SERIES A-MR-RAMS
 Single Acting-Single Ended Manual Reset Pistons-End Ported-Side Mounted

APPLICATIONS

LOW COST RAMS FOR POWER CLAMPING AND WORK HOLDING IN JIGS AND FIXTURES USING PLANT AIR AS A SOURCE OF PRESSURE.

BASIC FACE MOUNTED VERSION

DESCRIPTION: AIR PRESSURE EXTENDS THE PISTON FOR CLAMPING AND HOLDING. WHEN PRESSURE IS RELEASED, THE PISTON CAN BE RETRACTED MANUALLY. MOUNTING IS TO THE LOWER FACE AND PORTING IS AT THE REAR FACE.

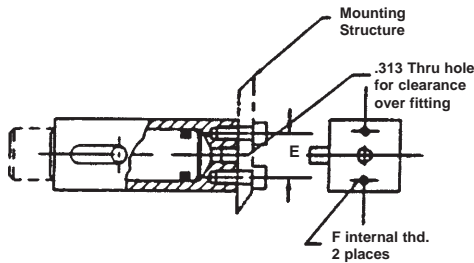


BASIC PART No.	A (IN.)	B (IN.)	C (IN.)	Mounting Screws D	E (IN.)	Int. Threads F	PISTON AREA (SQ.IN.)	FORCE @80 PSI (LB.)
6086-5	0.500	0.750	0.480	6-32X7/8	0.532	4-40	0.196	15
6087-5	0.625	0.875	0.560	8-32X1	0.600	4-40	0.307	25
6088-5	0.750	1.000	0.600	10-32X1-1/4	0.660	8-32	0.442	35
6089-5	0.875	1.125	0.725	10-32X1-3/8	0.750	8-32	0.601	50

SPECIFICATIONS: SERVICE, Plant Air
 M.O.P., 150 PSI
 MAT'L., ALUM. ALLOY

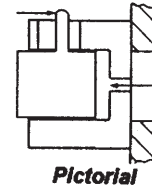
OPTIONAL END MOUNTING

DESCRIPTION: Same as the face mounted version except mounting and porting is at the rear face.



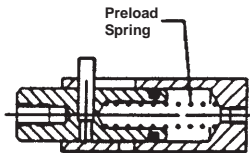
HOW TO ORDER THE END MOUNTED OPTION:
 ADD THE SUFFIX -EM TO BASIC PART NUMBER.

EXAMPLE: 6086 - 5 - EM
 END MOUNTING SUFFIX
 BASIC PART NO.



OPTIONAL PRELOADED PISTON

DESCRIPTION: A spring is contained inside the piston to provide a small mechanical force for holding a work piece in proper position before applying pressure.



HOW TO ORDER THE PRELOAD OPTION:
 ADD 10% TO THE BASE PRICE AND ADD THE SUFFIX -PP AS AN ADDITIONAL SUFFIX TO A BASIC PART NUMBER.

EXAMPLE: 6086 - 5 - PP
 PISTON PRELOAD SUFFIX
 BASIC PART NO.

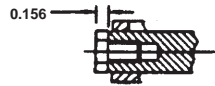
OPTIONAL NOSE FITTINGS

DESCRIPTION: Nose options thread directly into the tapped hole in the piston.

VEE NOSE OPTION (SUFFIX -VN)



FLAT NOSE OPTION (SUFFIX -FN)



RADIUS NOSE OPTION (SUFFIX -RN)



HOW TO ORDER THE NOSE OPTION:
 ADD 10% TO THE BASE PRICE AND SPECIFY THE OPTION AS AN ADDITIONAL SUFFIX TO A BASIC PART NUMBER.

EXAMPLE: 6086 - 5 - VN
 VEE NOSE OPTION
 BASIC PART NO.

NOTE: Parts are shipped with the basic 1/4-20 internal thread in the piston if no option is specified.

