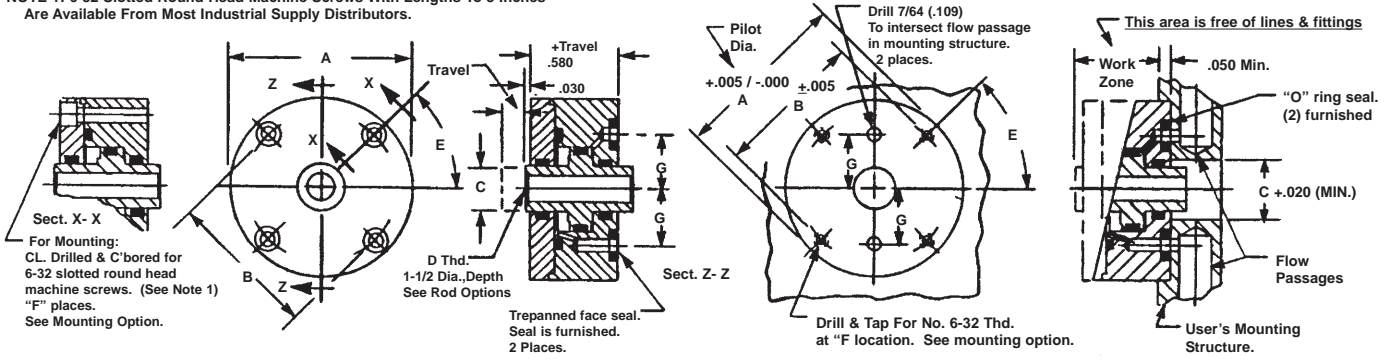


SHORT STROKE PNEUMATIC CYLINDERS - LO-PROFILE® SERIES A-ETI-PM

Double Acting-Double Ended Pistons With Thru Hole-End Trepanned Inlets-Pocket Mounted

NOTE 1: 6-32 Slotted Round Head Machine Screws With Lengths To 3 Inches Are Available From Most Industrial Supply Distributors.



PRODUCT DETAILS

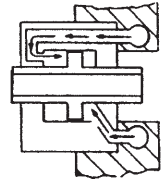
SUGGESTED MOUNTING DETAILS

| BASIC PART No. | O.D. A | BOLT CIRCLE B | ROD DIA. C | HOLE DIA. D | DEG. E | NO. PLCS. F | DIM. G | PISTON O.D. (IN.) | NET PISTON AREA (SQ. IN) |
|----------------|--------|---------------|------------|-------------|--------|-------------|--------|-------------------|--------------------------|
| 6035(-) | 1.000 | 0.688 | 0.250 | 0.129 | 00 | 2 | 0.330 | 0.450 | 0.110 |
| 6036(-) | 1.250 | 0.938 | 0.313 | 0.206 | 00 | 2 | 0.392 | 0.575 | 0.183 |
| 6037(-) | 1.500 | 1.188 | 0.375 | 0.206 | 00 | 2 | 0.464 | 0.700 | 0.275 |
| 6038(-) | 1.750 | 1.438 | 0.500 | 0.281 | 45 | 4 | 0.590 | 0.950 | 0.513 |
| 6039(-) | 2.000 | 1.688 | 0.625 | 0.344 | 45 | 4 | 0.714 | 1.200 | 1.824 |
| 6040(-) | 2.250 | 1.938 | 0.625 | 0.344 | 45 | 4 | 0.840 | 1.450 | 1.344 |
| 6041(-) | 2.500 | 2.188 | 0.625 | 0.344 | 45 | 4 | 0.965 | 1.700 | 1.963 |

(thrust force = net piston area times pressure)

SPECIFICATIONS:
SERVICE, PLANT AIR
M.O.P., 300 PSI
TEMPERATURE, -40°F to +250°F

MATERIALS:
BODY & COVER, ALUMINUM ALLOY
PISTON, ALUMINUM ALLOY
SEALS, BUNA "N" O RINGS
FASTENERS, ALLOY STEEL

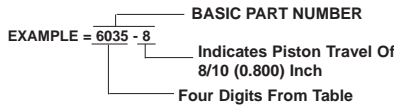


Pictorial

ORDERING INFORMATION:

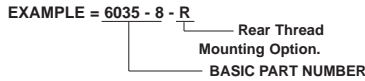
HOW TO ORDER BASIC CYLINDERS

A BASIC PART NUMBER consists of a four digit number followed by a dash number to indicate piston travel in increments of 1/10 (0.100) inch. Travel to -20(2.000) is standard. Please consult the Factory for longer travel.



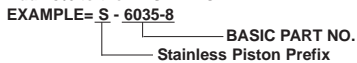
HOW TO ORDER CYLINDERS WITH OPTIONS

Add options to the BASIC PART NO. as suffixes in any order.



HOW TO ORDER CYLINDERS WITH STAINLESS STEEL PISTONS

Add the letter -S as a prefix to the BASIC PART NO. Add 25% to the BASE PRICE.



HOW TO ORDER ALL STAINLESS STEEL CYLINDERS

Add the letter -SS as a prefix to the BASIC PART NO. Add 40% to the BASE PRICE.



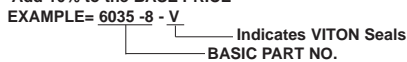
HOW TO ORDER METRIC CYLINDERS

A BASIC PART NO. FOR METRIC CYLINDERS consists of a four or five number from the with a prefix "M" and a suffix to indicate travel in millimeters. See inside rear cover for piston travel conversion.



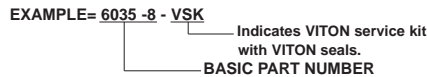
HOW TO ORDER CYLINDERS WITH VITON SEALS

Add suffix -V to the BASIC PART NO. Add 10% to the BASE PRICE



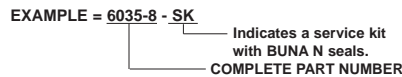
HOW TO ORDER VITON SERVICE KITS

Specify the BASIC PART NO. followed by the suffix -VSK



HOW TO ORDER BUNA "N" SERVICE KITS

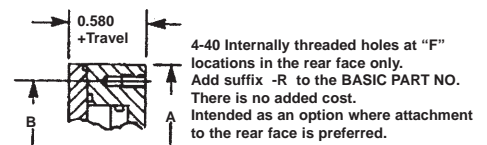
Specify the BASIC PART NO. followed by suffix -SK.



ROD MODIFICATION:

Cylinders with THRU HOLE pistons are normally supplied as shown. Please consult the Factory if wrench flats or other modification to the piston is required.

OPTIONAL MOUNTING STYLE:



NOTE: Optional piston rod ends extend from the COVER SIDE and apply to one end only unless otherwise specified. However, cylinders may be disassembled and pistons can be reversed. (end for end) Optional pistons are solid except for machining shown above.

