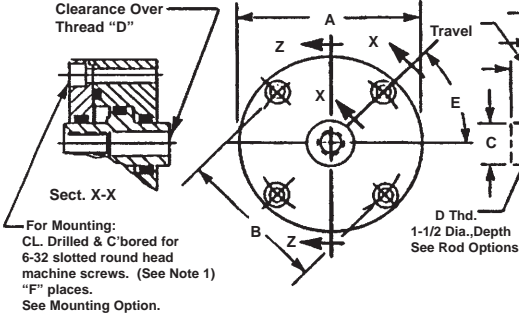


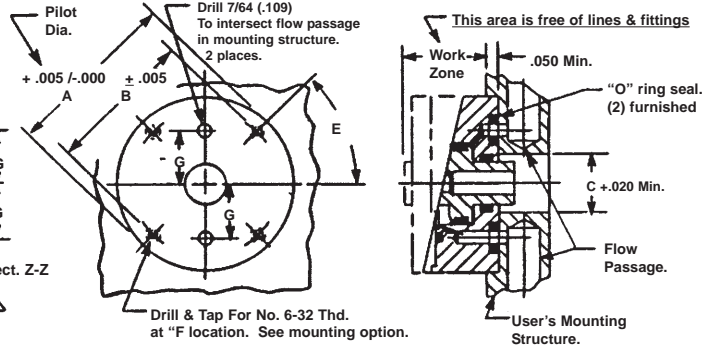
SHORT STROKE PNEUMATIC CYLINDERS - LO-Profile® SERIES A-ETI-PM

Double Acting-Double Ended Pistons With Internal Thread-End Trepanned Inlets-Pocket Mounted

NOTE 1: 6-32 Slotted Round Head Machine Screws With Lengths To 3 Inches Are Available From Most Industrial Supply Distributors.



PRODUCT DETAILS



SUGGESTED MOUNTING DETAILS

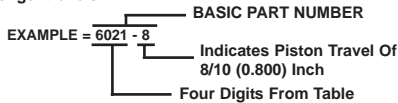
BASIC PART No.	O.D. A	BOLT CIRCLE B	ROD DIA. C	ROD THD. D	DEG. E	NO. PLCS. F	DIM. G	WR. FLATS H	DEPTH J	LENGTH K	OFF SET L	REAM M	WIDTH N	WIDTH O	PISTON O.D. (IN.)	NET PISTON AREA (SQ. IN)
6021(-)	1.000	0.688	0.250	4-40	00	2	0.330	0.188	0.305	0.385	0.141	0.094	0.063	0.156	0.450	0.110
6022(-)	1.250	0.938	0.313	10-32	00	2	0.392	0.250	0.305	0.385	0.141	0.094	0.094	0.156	0.575	0.183
6023(-)	1.500	1.188	0.375	10-32	00	2	0.464	0.281	0.406	0.486	0.188	0.125	0.125	0.188	0.700	0.275
6024(-)	1.750	1.438	0.500	1/4-28	45	4	0.590	0.375	0.610	0.690	0.281	0.188	0.188	0.250	0.950	0.513
6025(-)	2.000	1.688	0.625	5/16-24	45	4	0.714	0.500	0.610	0.690	0.281	0.188	0.188	0.250	1.200	0.824
6026(-)	2.250	1.938	0.625	5/16-24	45	4	0.840	0.500	0.610	0.690	0.281	0.188	0.188	0.250	1.450	1.344
6027(-)	2.500	2.188	0.625	5/16-24	45	4	0.965	0.500	0.610	0.690	0.281	0.188	0.188	0.250	1.700	1.963

(thrust force = area times pressure)

ORDERING INFORMATION:

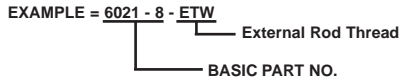
HOW TO ORDER BASIC CYLINDERS

A BASIC PART NUMBER consists of a four digit number followed by a dash number to indicate piston travel in increments of 1/10 (0.100) inch. Travel to -20(2.000) is standard. Please consult the factory for longer travels.



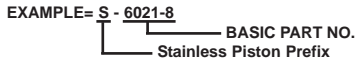
HOW TO ORDER CYLINDERS WITH OPTIONS

Add options to the BASIC PART NO. as suffixes in any order.



HOW TO ORDER CYLINDERS WITH STAINLESS STEEL PISTONS

Add the letter -S as a prefix to the BASIC PART NO. Add 25% to the BASE PRICE.



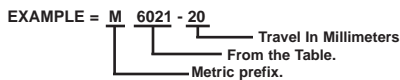
HOW TO ORDER ALL STAINLESS STEEL CYLINDERS

Add the letter -SS as a prefix to the BASIC PART NO. Add 40% to the BASE PRICE.



HOW TO ORDER METRIC CYLINDERS

A BASIC PART NO. FOR METRIC CYLINDERS consists of a four or five number from the with a prefix "M" and a suffix to indicate travel in millimeters. See inside rear cover for piston travel conversion.



SPECIFICATIONS:

SERVICE, PLANT AIR
M.O.P., 300 PSI
TEMPERATURE, -40°F to +250°F

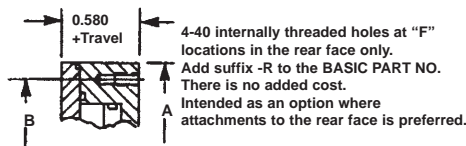
MATERIALS:

BODY & COVER, ALUMINUM ALLOY
PISTON, ALUMINUM ALLOY
SEALS, BUNA "N" O RINGS
FASTENERS, ALLOY STEEL

NOTES:

Dimensions are nominal in U.S. CUSTOMARY specifications. Metric cylinders are dimensionally equivalent except for conversion in mounting details where, threads, fasteners, clearance holes & counterbores are to metric standards. See inside back cover for a table of metric fastener conversion. There is no added cost for metric cylinders. An air/oil mist unit is recommended for internal lubrication. Where such units are not practical, service kits including seals and factory approved lubricant are available. Wrench flats may not be necessary if cylinders can be pressurized in the extended or retracted position while tightening the rod connection. Inquiries regarding modifications to BASIC CYLINDERS are always welcome.

OPTIONAL MOUNTING STYLE:



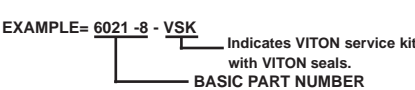
HOW TO ORDER CYLINDERS WITH VITON SEALS

Add suffix -V to the BASIC PART NO. Add 10% to the BASE PRICE



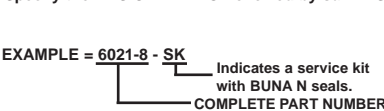
HOW TO ORDER VITON SERVICE KITS

Specify the BASIC PART NO. followed by the suffix -VSK

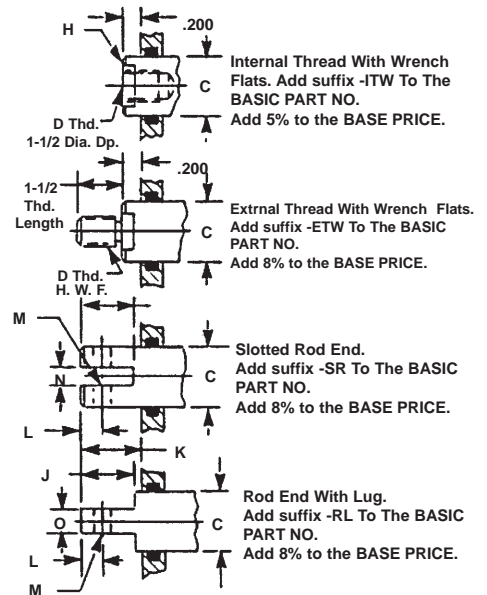


HOW TO ORDER BUNA "N" SERVICE KITS

Specify the BASIC PART NO. followed by suffix -SK.



OPTIONAL ROD ENDS:



NOTE: Optional piston rod ends extend from the COVER SIDE and apply to one end only unless otherwise specified. However, cylinders may be disassembled and pistons can be reversed. (end for end)
Optional pistons are solid except for machining shown above.

