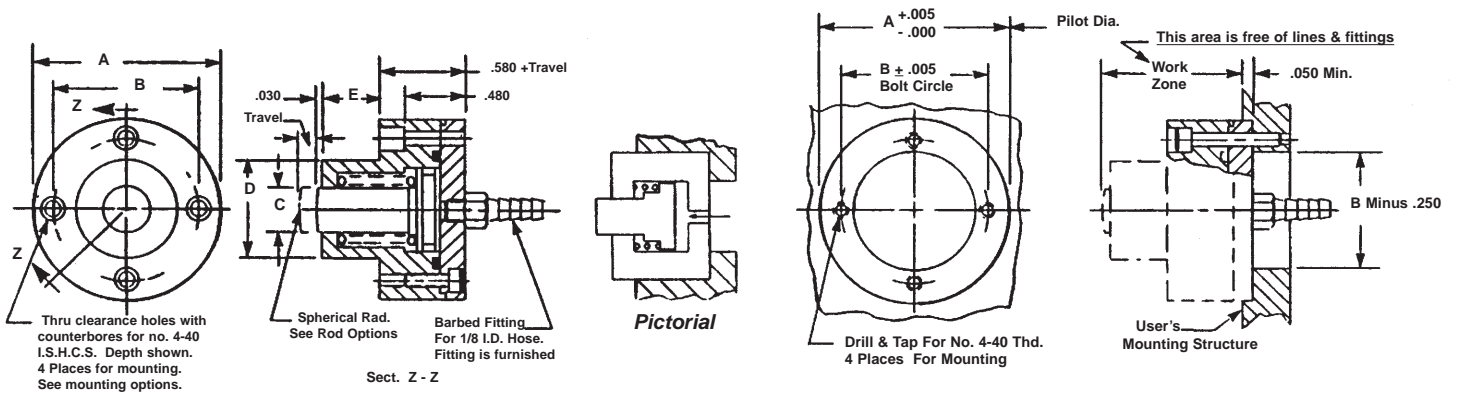


SHORT STROKE PNEUMATIC CYLINDERS - LO-PROFILE® SERIES A-EP-PM

Single Acting-Spring Retracting-Single Ended Pistons-End Ported-Pocket Mounted



PRODUCT DETAILS

SUGGESTED MOUNTING DETAILS

BASIC PART No.	O.D. A	BOLT CIRCLE B	ROD DIA. C	BOSS DIA. D	BOSS LENGTH E	THD. F	WR. FLATS G	LENGTH H	DEPTH J	OFF-SET K	REAM L	WIDTH M	WIDTH N	PISTON O.D. (IN.)	EXTEND PISTON AREA (SQ. IN)
6007(-)	1.000	0.688	0.250	0.450	Table 1	4-40	0.188	0.385	0.305	0.141	0.094	0.063	0.156	0.450	0.159
6008(-)	1.250	0.938	0.250	0.500	Table 1	4-40	0.188	0.385	0.305	0.141	0.094	0.063	0.156	0.575	0.260
6009(-)	1.500	1.188	0.375	0.813	0.456	10-32	0.281	0.486	0.406	0.188	0.125	0.125	0.188	0.700	0.385
6010(-)	1.750	1.438	0.375	0.813	0.456	10-32	0.281	0.486	0.406	0.188	0.125	0.125	0.188	0.960	0.709
6011(-)	2.000	1.688	0.625	1.125	0.931	5/16-24	0.500	0.690	0.610	0.281	0.188	0.188	0.250	1.200	1.131
6012(-)	2.250	1.938	0.625	1.125	0.931	5/16-24	0.500	0.690	0.610	0.281	0.188	0.188	0.250	1.450	1.851
6013(-)	2.500	2.188	0.625	1.125	0.931	5/16-24	0.500	0.690	0.610	0.281	0.188	0.188	0.250	1.700	2.270

TABLE 1

PART NO.	E
6007-1 Thru -3	0.231
6008-1 Thru -3	0.231
6007-4 Thru -6	0.381
6008-4 Thru -6	0.381
6007-7 Thru -10	0.572
6008-7 Thru -10	0.572

ORDERING INFORMATION:

HOW TO ORDER BASIC CYLINDERS

A BASIC PART NUMBER consists of a four digit number followed by a dash number to indicate piston travel in increments of 1/10(0.100) Inch. Travel to -10(1.000) is standard. Consult the factory for longer travels.

EXAMPLE = 6007 - 8
 - 6007 - BASIC PART NUMBER
 - 8 - Indicates Piston Travel Of 8/10 (0.800) Inch
 - Part Number From Table

HOW TO ORDER CYLINDERS WITH OPTIONS

Add options to the BASIC PART NO. as suffixes in any order.

EXAMPLE = 6007 - 6 - ETW
 - 6007 - BASIC PART NO.
 - 6 - External Rod Thread

HOW TO ORDER CYLINDERS WITH STAINLESS STEEL PISTONS

Add the letter -S as a prefix to the BASIC PART NO. Add 25% to the BASE PRICE.

EXAMPLE = S - 6007 - 8
 - S - Stainless Piston Prefix
 - 6007 - BASIC PART NO.

HOW TO ORDER ALL STAINLESS STEEL CYLINDERS

Add the letter -SS as a prefix to the BASIC PART NO. Add 40% to the BASE PRICE.

EXAMPLE = SS - 6007 - 8
 - SS - All STAINLESS STEEL Cylinder
 - 6007 - BASIC PART NO.

HOW TO ORDER METRIC CYLINDERS

A BASIC PART NO. FOR METRIC CYLINDERS consists of a four or five number from the with a prefix "M" and a suffix to indicate travel in millimeters. See inside rear cover for piston travel conversion.

EXAMPLE = M 6008 - 20
 - M - Metric prefix.
 - 6008 - Travel In Millimeters From the Table.
 - 20 - Metric prefix.

NOTE: Product #6007 is not available as a Metric Option

HOW TO ORDER CYLINDERS WITH VITON SEALS

Add suffix -V to the BASIC PART NO. Add 10% to the BASE PRICE

EXAMPLE = 6007 - 6 - V
 - 6007 - BASIC PART NO.
 - 6 - Indicates VITON Seals

SPECIFICATIONS:

SERVICE, PLANT AIR
 M.O.P., 300 PSI
 TEMPERATURE, -40°F to +250°F

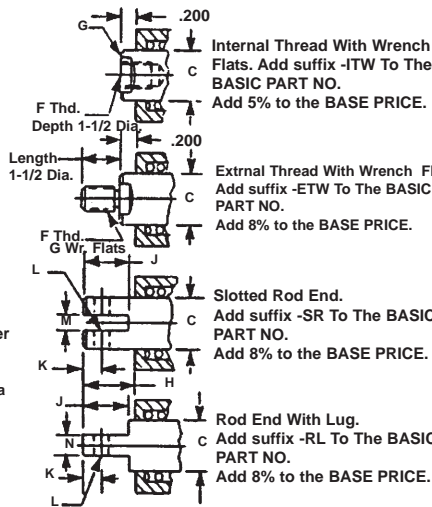
MATERIALS:

BODY & COVER, ALUMINUM ALLOY
 PISTON, ALUMINUM ALLOY
 SPRINGS, MUSIC WIRE or St. Stl.
 SEALS, BUNA "N" O RINGS
 FASTENERS, ALLOY STEEL

NOTES:

Dimensions are nominal in U.S. CUSTOMARY specifications. Metric cylinders are dimensionally equivalent except for conversion in mounting details where, threads, fasteners, clearance holes & counterbores are to metric standards. See inside back cover for a table of metric fastener conversion. There is no added cost for metric cylinders. An air/oil mist unit is recommended for internal lubrication. Where such units are not practical, service kits including seals and factory approved lubricant are available. Spring force for basic cylinders is sufficient to fully retract pistons. Inquiries regarding modifications to BASIC CYLINDERS are always welcome.

OPTIONAL ROD ENDS:

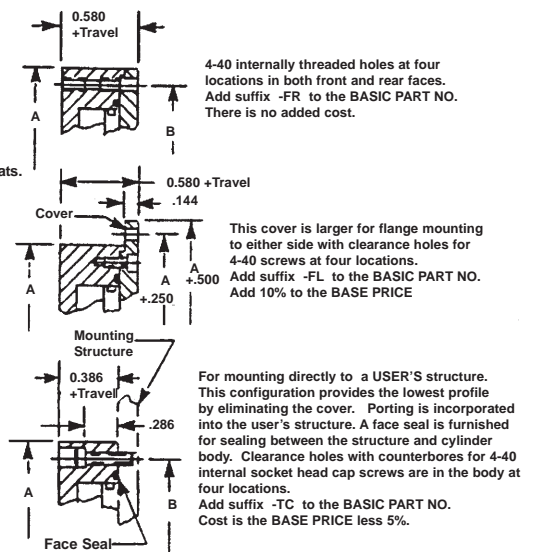


HOW TO ORDER BUNA "N" SERVICE KITS

Specify the BASIC PART NO. followed by suffix -SK.

EXAMPLE = 6007 - 8 - SK
 - 6007 - BASIC PART NO.
 - 8 - Indicates a service kit with BUNA N seals.
 - SK - COMPLETE PART NUMBER

OPTIONAL MOUNTING STYLES:



HOW TO ORDER VITON SERVICE KITS

Specify the BASIC PART NO. followed by the suffix -VSK

EXAMPLE = 6007 - 8 - VSK
 - 6007 - BASIC PART NO.
 - 8 - Indicates VITON service kit with VITON seals.
 - VSK - BASIC PART NUMBER

