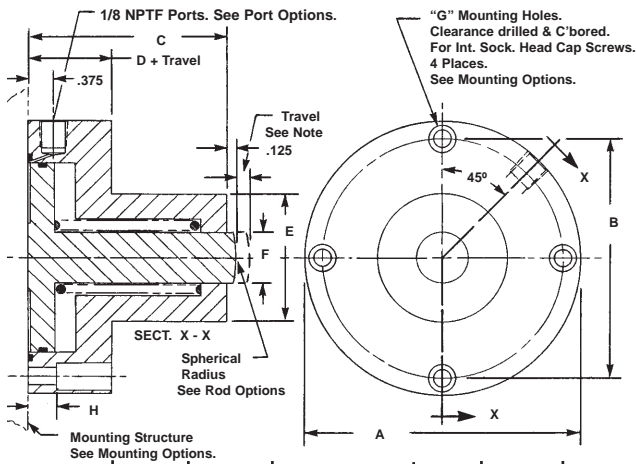


SHORT STROKE PNEUMATIC CYLINDERS - LO-Profile® SERIES B-PR3-SP-FM

Single Acting-Spring Retracting-Single Ended Pistons-Side Ported-Either Face Mounted



SPECIFICATIONS:
SERVICE, PLANT AIR
M.O.P., 150 PSI
TEMPERATURE, -40°F to +250°F
MATERIALS:
BODY & COVER, ALUMINUM ALLOY
PISTON, STAINLESS STEEL
SPRINGS, MUSIC WIRE
SEALS, BUNA "N" O RINGS
FASTENERS, ALLOY STEEL

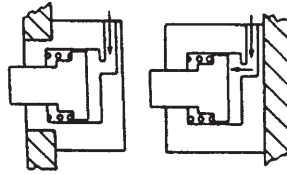
NOTES:
Dimensions are nominal in U.S. CUSTOMARY specifications.
METRIC CYLINDERS are dimensionally equivalent with clearance holes, counterbores, threads & fasteners to metric specifications. See inside back cover for fastener conversion table. There is no added cost for METRIC CYLINDERS.

An air/oil mist unit is recommended for internal lubrication. Where such units are not practical, SERVICE KITS including seals & factory approved lube are available.

Cylinders may also be used in low pressure hydraulic and vacuum service.

Inquiries regarding modifications to BASIC CYLINDERS are always welcome.

Spring force for BASIC CYLINDERS is sufficient to fully retract pistons. Higher spring force may be required for retracting loads attached to rod ends. Please consult the Factory.



Pictorial

BASIC PART No.	O.D. A	B.C. B	BODY LENGTH C	SHOULDER LENGTH D	BOSS DIA. E	ROD DIA. F	MNTING HOLES G	DEPTH H	WR. FLATS J	THREAD K	LENGTH L	REAM M	WIDTH N	OFF-SET P	LENGTH Q	WIDTH R	WIDTH S	PISTON DIA. (IN.)	PISTON AREA (SQ.IN.)
S1710(-)	3.000	2.560	2.525	0.875	1.500	0.625	10-32	0.757	0.500	5/16-24	0.610	0.188	0.188	0.281	0.685	0.250	0.375	1.950	2.986
S17105(-)	3.500	3.014	2.900	1.000	1.875	0.750	1/4-28	0.820	0.563	3/8-24	0.813	0.250	0.250	0.375	0.888	0.375	0.375	2.340	4.300
S1711(-)	4.000	3.514	2.900	1.000	1.875	0.750	1/4-28	0.820	0.563	3/8-24	0.813	0.250	0.250	0.375	0.888	0.375	0.375	2.840	6.334
S17115(-)	4.500	3.900	3.400	1.250	2.500	1.000	5/16-24	1.007	0.750	1/2-20	1.016	0.313	0.313	0.469	1.091	0.500	0.500	3.140	7.744
S1712(-)	5.000	4.400	3.400	1.250	2.500	1.000	5/16-24	1.007	0.750	1/2-20	1.016	0.313	0.313	0.469	1.091	0.500	0.500	3.640	10.406
S17125(-)	5.500	4.808	3.525	1.500	3.000	1.000	3/8-24	1.195	0.750	1/2-20	1.016	0.313	0.313	0.469	1.091	0.500	0.625	4.000	12.566
S1713(-)	6.000	5.308	3.525	1.500	3.000	1.000	3/8-24	1.195	0.750	1/2-20	1.016	0.313	0.313	0.469	1.091	0.500	0.625	4.500	15.904

OPTIONAL PORTS



U.S.A. 1/16 NPTF Ports
Tapered Thread Sealing
Add suffix -1/16 NPTF to the BASIC PART NUMBER.
There is no added cost.



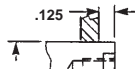
U.S.A. 10-32 Threaded Ports.
Straight Thread - Flat Gasket Sealing.
Add suffix -1032 to the BASIC PART NUMBER.
There is no added cost.

INTERNATIONAL PORTS

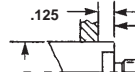
The following International Ports are available with minor modification to the product. Please consult the factory.

- U.S.A., S.A.E. -4
- British, 1/8 - 28 BSPT
- British, 1/8 - 28 BSPP
- Metric, M10x1, ISO 6149

OPTIONAL ROD ENDS



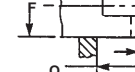
Internal Thread With Wrench Flats
Add suffix -ITW To The BASIC PART NUMBER.
Add 5% to the BASE PRICE.



External Thread With Wrench Flats
Add suffix -ETW to the BASIC PART NUMBER.
Add 8% to the BASE PRICE

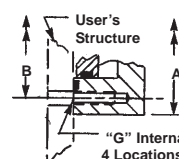


Slotted Rod End
Add suffix -SR TO THE BASIC PART NUMBER.
Add 8% to the BASE PRICE.



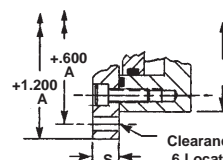
Rod End With Lug
Add suffix -RL To The BASIC PART NUMBER. Add 8% to the BASE PRICE

OPTIONAL MOUNTING

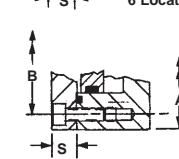


Internally Threaded Body.
Add suffix -T to the BASIC PART NUMBER.
There is no added cost.

OPTIONAL CONFIGURATIONS



This Coverplate Is Larger for Flange Mounting to Either Side.
Add suffix -FL to the BASIC PART NUMBER.
Add 20% to the BASE PRICE.



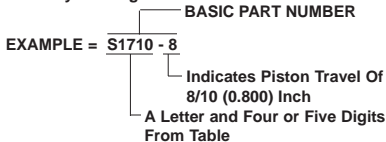
Clearance Holes For 5/16-24 I.S.H.C.S.
6 Locations.



Coverplate Option.
Add suffix -CP to the BASIC PART NUMBER.
Add 15% to the BASE PRICE.

HOW TO ORDER BASIC CYLINDERS

A BASIC PART NUMBER consists of a letter and four or five digits followed by a dash number to indicate piston travel in increments of 1/10 (0.100) Inch. Travel to -10 (1.000) inches is standard. Please consult the Factory for longer travel.



HOW TO ORDER CYLINDERS WITH OPTIONS

Add options to the BASIC PART NO. as suffixes in any order.
EXAMPLE= S1710-8 - ETW



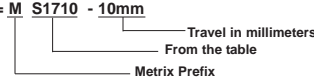
HOW TO ORDER ALL STAINLESS STEEL CYLINDERS

Add the letter -S as a prefix to the BASIC PART NO.
Add 50% to the BASE PRICE.
EXAMPLE = S S 1710 -10



HOW TO ORDER METRIC CYLINDERS

A BASIC PART NO. FOR METRIC CYLINDERS consists of a letter and four or five numbers from the table with a prefix "M" and a suffix to indicate travel in millimeters. See inside rear cover for piston travel conversion.
EXAMPLE = M S1710 - 10mm



HOW TO ORDER CYLINDERS WITH VITON SEALS

Add suffix -V to the BASIC PART NO.
Add 10% to the BASE PRICE
EXAMPLE = S1710-5 - V



HOW TO ORDER BUNA "N" SERVICE KITS

Specify the BASIC PART NO. followed by suffix -SK.



HOW TO ORDER VITON SERVICE KITS

Specify the BASIC PART NO. followed by suffix -VSK.

