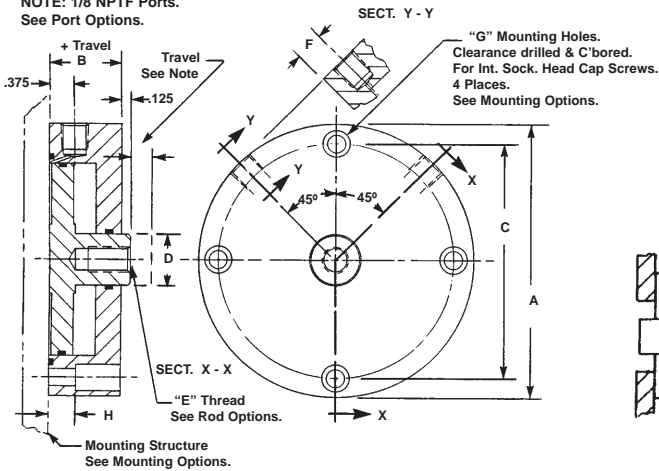


SHORT STROKE PNEUMATIC CYLINDERS - LO-Profile® SERIES B-PR2-SP-FM

Double Acting-Single Ended Pistons-Side Ported-Face Mounted

NOTE: 1/8 NPTF Ports.
See Port Options.



SPECIFICATIONS:
SERVICE, PLANT AIR
M.O.P., 150 PSI
TEMPERATURE, -40°F to +250°F
MATERIALS:
BODY & COVER, ALUMINUM ALLOY
PISTON, ALUMINUM ALLOY
SEALS, BUNA "N" O RINGS
FASTENERS, ALLOY STEEL

NOTES:

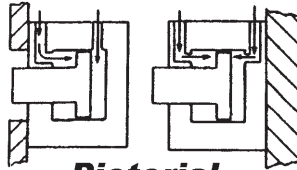
Dimensions are nominal in U.S. CUSTOMARY specifications.
METRIC CYLINDERS are dimensionally equivalent with clearance holes, counterbores, threads & fasteners to metric specifications. See inside back cover for fastener conversion table. There is no added cost for METRIC CYLINDERS.

An air/oil mist unit is recommended for internal lubrication. Where such units are not practical, SERVICE KITS including seals & factory approved lube are available.

Cylinders may also be used in low pressure hydraulic and vacuum service.

Wrench flats may not be necessary if cylinders can be pressurized in the retracted or extended position while tightening the rod joint.

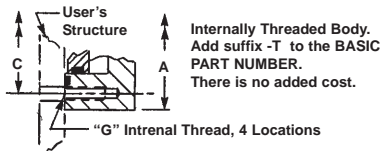
Inquiries regarding modifications to BASIC CYLINDERS are always welcome.



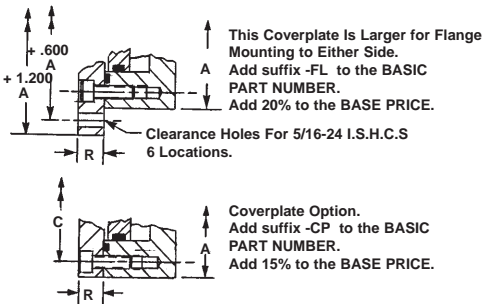
Pictorial

BASIC PART No.	O.D. A	BASIC BODY LENGTH B	B.C C	ROD DIA. D	ROD THD. E	PORT OFFSET F	MNTING HOLES G	DEPTH H	WR. FLATS J	DEPTH K	WIDTH L	REAM M	OFF-SET N	LENGTH P	WIDTH Q	WIDTH R	PISTON DIA. (IN.)	EXT. PISTON AREA (SQ.IN.)	RETR. PISTON AREA (SQ.IN.)
1598(-)	3.000	0.750	2.560	0.625	5/16-24	0.398	10-32	0.630	0.500	0.610	0.188	0.188	0.281	0.685	0.250	0.375	1.950	2.986	2.679
15985(-)	3.500	0.750	3.014	0.750	3/8-24	0.398	1/4-28	0.570	0.563	0.813	0.250	0.250	0.375	0.888	0.375	0.375	2.340	4.300	3.858
1599(-)	4.000	0.750	3.514	0.750	3/8-24	0.398	1/4-28	0.570	0.563	0.813	0.250	0.250	0.375	0.888	0.375	0.375	2.840	6.334	5.892
15995(-)	4.500	1.000	3.900	1.000	1/2-20	0.523	5/16-24	0.756	0.750	1.016	0.313	0.313	0.469	1.091	0.500	0.500	3.140	7.744	6.959
1600(-)	5.000	1.000	4.400	1.000	1/2-20	0.523	5/16-24	0.756	0.750	1.016	0.313	0.313	0.469	1.091	0.500	0.500	3.640	10.406	9.621
16005(-)	5.500	1.250	4.808	1.000	1/2-20	0.648	3/8-24	0.945	0.750	1.016	0.313	0.313	0.469	1.091	0.500	0.625	4.000	12.566	11.781
1601(-)	6.000	1.250	5.308	1.000	1/2-20	0.648	3/8-24	0.945	0.750	1.016	0.313	0.313	0.469	1.091	0.500	0.625	4.500	15.904	15.119

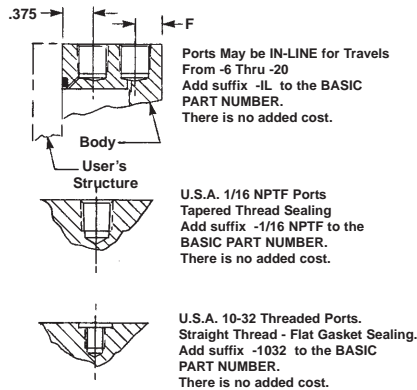
OPTIONAL MOUNTING



OPTIONAL CONFIGURATIONS



OPTIONAL PORTS

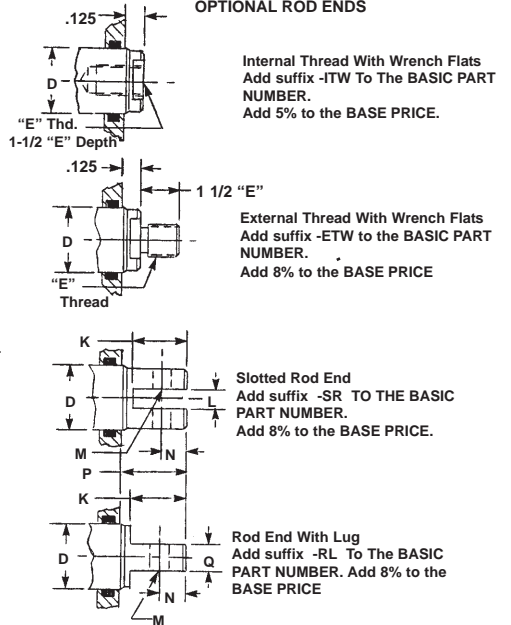


INTERNATIONAL PORTS

The following International Ports are available with minor modification to the product. Please consult the factory.

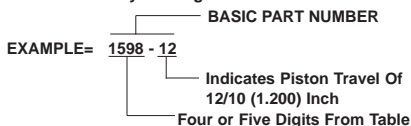
- U.S.A., S.A.E. -4
- British, 1/8 - 28 BSPT
- British, 1/8 - 28 BSPP
- Metric, M10x1, ISO 6149

OPTIONAL ROD ENDS



HOW TO ORDER BASIC CYLINDERS

A BASIC PART NUMBER consists of a four or five digit number from the table followed by a dash number to indicate piston travel in increments of 1/10 (0.100) Inch. Travel to -20 (2.000) inches is standard. Please consult the Factory for longer travel.



HOW TO ORDER CYLINDERS WITH OPTIONS

Add options to the BASIC PART NO. as suffixes in any order.

EXAMPLE = 1598-10 - ETW

1598 - BASIC PART NO.

10 - External Rod Thread

ETW - External Rod Thread

HOW TO ORDER CYLINDERS WITH STAINLESS STEEL PISTONS.

Add the letter -S as a prefix to the BASIC PART NO. Add 30% to the BASE PRICE.

EXAMPLE = S 1598-12

S - BASIC PART NO.

1598 - STAINLESS STEEL PREFIX

HOW TO ORDER ALL STAINLESS STEEL CYLINDERS

Add the letter -SS as a prefix to the BASIC PART NO. Add 50% to the BASE PRICE.

EXAMPLE = SS 1598-20

SS - BASIC PART NO.

1598 - All STAINLESS STEEL Cylinder

HOW TO ORDER METRIC CYLINDERS

A BASIC PART NO. FOR METRIC CYLINDERS consists of a four or five digit number from the table with a prefix "M" and a suffix to indicate travel in millimeters. See inside rear cover for piston travel conversion.

EXAMPLE= M 1598 - 10mm

M - Metric Prefix

1598 - Travel in millimeters

10 - From the table

HOW TO ORDER CYLINDERS WITH VITON SEALS

Add suffix -V to the BASIC PART NO. Add 10% to the BASE PRICE

EXAMPLE = 1598-8 - V

V - Indicates VITON Seals

1598 - BASIC PART NO.

HOW TO ORDER BUNA "N" SERVICE KITS

Specify the BASIC PART NO. followed by suffix -SK.

EXAMPLE= 1598-2 - SK

SK - Indicates Buna "N" Service Kit

1598 - BASIC PART NO.

HOW TO ORDER VITON SERVICE KITS

Specify the BASIC PART NO. followed by suffix -VSK.

EXAMPLE= 1598-6 - VSK

VSK - Indicates Viton Service Kit

1598 - BASIC PART NO.

