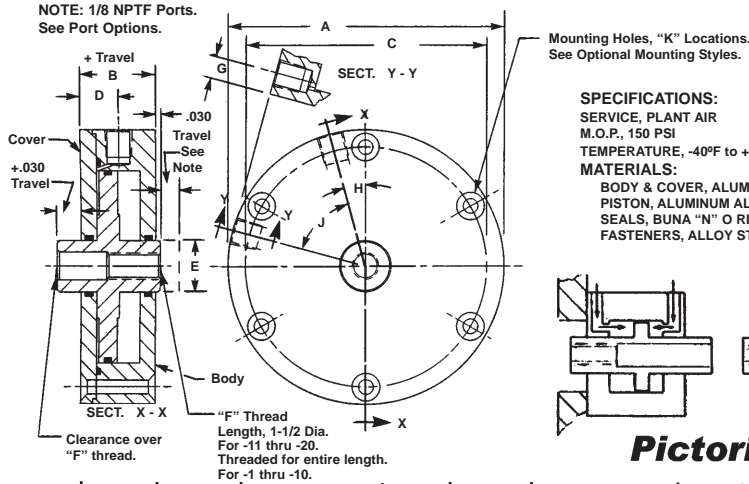


SHORT STROKE PNEUMATIC CYLINDERS - LO-Profile® SERIES B-SP-FM

Double Acting-Double Ended Pistons with Thread for Thru Bolts-Side Ported-Either Face Mounted



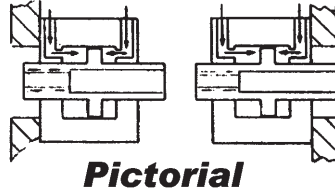
NOTES:

Dimensions are nominal in U.S. CUSTOMARY specifications. METRIC CYLINDERS are dimensionally equivalent with clearance holes, counterbores, threads & fasteners to metric specifications. See inside back cover for fastener conversion table. There is no added cost for METRIC CYLINDERS.

An air/oil mist unit is recommended for internal lubrication. Where such units are not practical, SERVICE KITS including seals & factory approved lube are available. Cylinders may also be used in low pressure hydraulic and vacuum service.

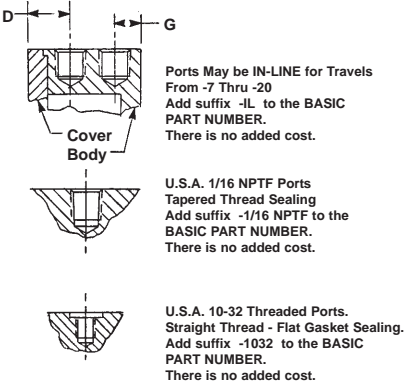
PISTON DIAMETERS & NET AREAS

| BASIC PART No. | PISTON DIA. (IN) | NET PISTON AREA (SQ. IN) |
|----------------|------------------|--------------------------|
| 802(-) | 1.800 | 2.238 |
| 8025(-) | 2.300 | 3.713 |
| 803(-) | 2.800 | 5.716 |
| 8035(-) | 3.300 | 8.111 |
| 804(-) | 3.800 | 10.899 |
| 8045(-) | 4.300 | 13.737 |
| 805(-) | 4.800 | 17.311 |



| BASIC PART No. | O.D. A | BASIC BODY LENGTH B | B.C C | PORT OFFSET D | ROD DIA E | ROD THD. F | PORT OFFSET G | DEG. H | DEG. J | K | WR. FLATS L | DEPTH M | WIDTH N | REAM P | OFF-SET Q | LENGTH R | WIDTH S | LENGTH T | WIDTH U |
|----------------|--------|---------------------|-------|---------------|-----------|------------|---------------|--------|--------|---|-------------|---------|---------|--------|-----------|----------|---------|----------|---------|
| 802(-) | 3.000 | 0.681 | 2.500 | 0.485 | 0.625 | 5/16-24 | 0.297 | 18 | 72 | 5 | 0.500 | 0.610 | 0.188 | 0.188 | 0.281 | 0.690 | 0.250 | 0.581 | 0.110 |
| 8025(-) | 3.500 | 0.775 | 3.000 | 0.551 | 0.750 | 3/8-24 | 0.324 | 15 | 60 | 6 | 0.563 | 0.813 | 0.250 | 0.250 | 0.375 | 0.893 | 0.375 | 0.675 | 0.149 |
| 803(-) | 4.000 | 0.775 | 3.500 | 0.551 | 0.750 | 3/8-24 | 0.324 | 15 | 60 | 6 | 0.563 | 0.813 | 0.250 | 0.250 | 0.375 | 0.893 | 0.375 | 0.675 | 0.149 |
| 8035(-) | 4.500 | 0.900 | 4.000 | 0.625 | 0.750 | 7/16-20 | 0.375 | 11-1/4 | 45 | 8 | 0.563 | 0.813 | 0.250 | 0.250 | 0.375 | 0.893 | 0.375 | 0.800 | 0.172 |
| 804(-) | 5.000 | 0.900 | 4.500 | 0.625 | 0.750 | 7/16-20 | 0.375 | 11-1/4 | 45 | 8 | 0.563 | 0.813 | 0.250 | 0.250 | 0.375 | 0.893 | 0.375 | 0.800 | 0.172 |
| 8045(-) | 5.500 | 0.900 | 5.000 | 0.625 | 1.000 | 1/2-20 | 0.375 | 11-1/4 | 45 | 8 | 0.750 | 1.016 | 0.313 | 0.313 | 0.469 | 1.096 | 0.500 | 0.800 | 0.172 |
| 805(-) | 6.000 | 0.900 | 5.500 | 0.625 | 1.000 | 1/2-20 | 0.375 | 11-1/4 | 45 | 8 | 0.750 | 1.016 | 0.313 | 0.313 | 0.469 | 1.096 | 0.500 | 0.800 | 0.172 |

OPTIONAL PORTS



INTERNATIONAL PORTS

The following International Ports are available with minor modification to the product. Please consult the factory.

- U.S.A., S.A.E. -4
- British, 1/8 - 28 BSPT
- British, 1/8 - 28 BSPP
- Metric, M10x1, ISO 6149

HOW TO ORDER BASIC CYLINDERS

A BASIC PART NUMBER consists of a three or four digit number followed by a dash number to indicate piston travel in increments of 1/10 (0.100) Inch. Travel to -20 (2.000) inches is standard. Please consult the Factory for longer travel.

EXAMPLE = 802-15
 BASIC PART NUMBER
 Indicates Piston Travel Of 15/10 (1.500) Inch
 Three or Four Digits From Table

HOW TO ORDER CYLINDERS WITH OPTIONS

Add options to the BASIC PART NO. as suffixes in any order.

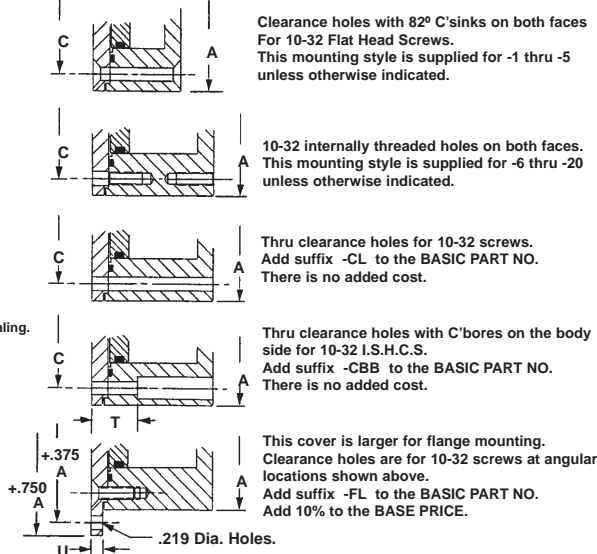
EXAMPLE = 802-8-IL
 In-line Ports
 BASIC PART NO.

HOW TO ORDER CYLINDERS WITH STAINLESS STEEL PISTONS.

Add the letter -S as a prefix to the BASIC PART NO. Add 30% to the BASE PRICE.

EXAMPLE = S 802-10
 BASIC PART NO.
 STAINLESS STEEL PREFIX

OPTIONAL MOUNTING STYLES



HOW TO ORDER ALL STAINLESS STEEL CYLINDERS

Add the letters SS as a prefix to the BASIC PART NO. Add 50% to the BASE PRICE.
 EXAMPLE = SS 802-10
 BASIC PART NO.
 All STAINLESS STEEL Cylinder

HOW TO ORDER METRIC CYLINDERS

A BASIC PART NO. FOR METRIC CYLINDERS consists of a three or four digit number from the table with a prefix "M" and a suffix to indicate travel in millimeters. See inside rear cover for piston travel conversion.

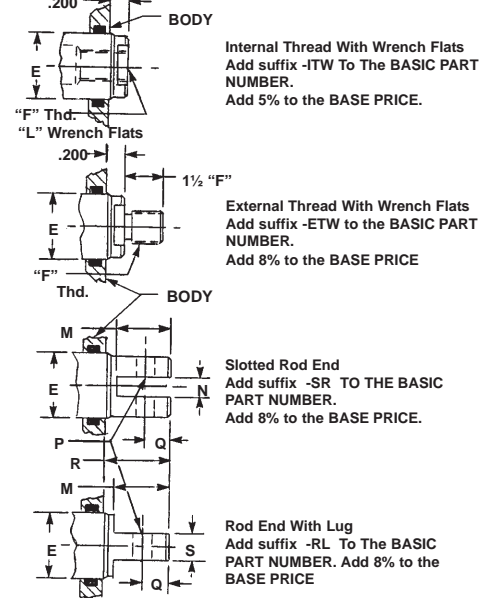
EXAMPLE = M 802 - 10mm
 Travel in millimeters
 From the table
 Metric Prefix

HOW TO ORDER CYLINDERS WITH VITON SEALS

Add suffix -V to the BASIC PART NO. Add 10% to the BASE PRICE

EXAMPLE = 802-1-V
 Indicates VITON Seals
 BASIC PART NO.

OPTIONAL ROD ENDS



NOTES - Optional piston rod ends extend from the BODY SIDE and apply to one end unless otherwise specified. However, pistons may be reversed, (end for end). If required, add suffix -R to the BASIC PART NUMBER. There is no added cost. Piston rods have no internal machining on options -ETW, -SR and -RL.

HOW TO ORDER BUNA "N" SERVICE KITS

Specify the BASIC PART NO. followed by suffix -SK.

EXAMPLE = 802-10 - SK
 Indicates Buna "N" Service Kit
 BASIC PART NO.

HOW TO ORDER VITON SERVICE KITS

Specify the BASIC PART NO. followed by suffix -VSK.

EXAMPLE = 802-5 - VSK
 Indicates Buna "N" Service Kit
 BASIC PART NO.