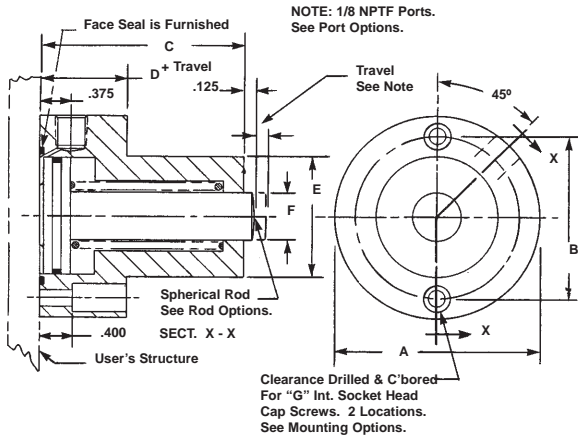


SHORT STROKE PNEUMATIC CYLINDERS - LO-Profile® SERIES A-PR3-SP-FM

Single Acting-Spring Retracting-Single Ended Pistons-Side Ported-Either Face Mounted



SPECIFICATIONS:
 SERVICE, PLANT AIR
 M.O.P., 300 PSI
 TEMPERATURE, -40°F to +250°F

MATERIALS:
 BODY & COVER, ALUMINUM ALLOY
 PISTON, STAINLESS STEEL
 SPRING, MUSIC WIRE
 SEALS, BUNA "N" O RINGS
 FASTENERS, ALLOY STEEL

NOTES:
 Dimensions are nominal in U.S. CUSTOMARY specifications.

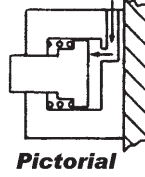
METRIC CYLINDERS are dimensionally equivalent with clearance holes, counterbores, threads & fasteners to metric specifications. See inside back cover for fastener conversion table. There is no added cost for METRIC CYLINDERS.

An air/oil mist unit is recommended for internal lubrication. Where such units are not practical, SERVICE KITS including seals & factory approved lube are available.

Cylinders may also be used in low pressure hydraulic and vacuum service

Inquiries regarding modifications to BASIC CYLINDERS are always welcome.

Spring force for BASIC CYLINDERS is sufficient to fully retract pistons. Higher spring force may be required for retracting loads attached to rod ends. Please consult the FACTORY.



BASIC PART No.	O.D. A	BOLT CIRCLE B	OVER-ALL C	BASIC BODY LENGTH D	HUB DIA. E	ROD DIA. F	MNTG. HOLES G	THD. H	WR. FLATS J	DEPTH K	REAM L	WIDTH M	OFF-SET N	LENGTH P	WIDTH Q	WIDTH R	PISTON DIA. (IN.)	PISTON AREA (SQ. IN)
S1705(-)	1.250	0.982	2.738	0.562	0.625	0.250	4-40	4-40	0.188	0.305	0.094	0.063	0.141	0.380	0.156	0.250	0.450	0.159
S1706(-)	1.500	1.232	1.863	0.562	0.875	0.375	4-40	10-32	0.281	0.406	0.125	0.125	0.188	0.481	0.188	0.250	0.700	0.385
S1707(-)	1.750	1.378	1.863	0.625	1.000	0.375	8-32	10-32	0.281	0.406	0.125	0.125	0.188	0.481	0.188	0.250	0.800	0.502
S1708(-)	2.000	1.628	2.468	0.688	1.250	0.625	8-32	5/16-24	0.500	0.610	0.188	0.188	0.281	0.685	0.250	0.313	1.050	0.866
S17085(-)	2.250	1.840	2.468	0.688	1.250	0.625	10-32	5/16-24	0.500	0.610	0.188	0.188	0.281	0.685	0.250	0.375	1.250	1.227
S1709(-)	2.500	2.060	2.525	0.875	1.500	0.625	10-32	5/16-24	0.500	0.610	0.188	0.188	0.281	0.685	0.250	0.375	1.450	1.651

OPTIONAL PORTS



U.S.A. 1/16 NPTF Port.
 Tapered Thread Sealing
 Add suffix -1/16 NPTF to the BASIC PART NUMBER.
 There is no added cost.



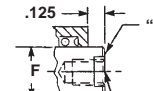
U.S.A. 10-32 Threaded Ports.
 Straight Thread - Flat Gasket Sealing.
 Add suffix -1032 to the BASIC PART NUMBER.
 There is no added cost.

INTERNATIONAL PORTS

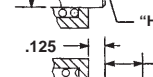
The following International Ports are available with minor modification to the product. Please consult the factory.

U.S.A., S.A.E. -4
 British, 1/8 - 28 BSPT
 British, 1/8 - 28 BSPP
 Metric, M10x1, ISO 6149

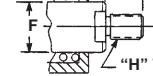
OPTIONAL ROD ENDS



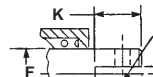
"J" Wrench Flats
 Internal Thread With Wrench Flats
 Add suffix -ITW To The BASIC PART NO.
 Add 5% to the BASE PRICE.



"H" Thd. 1-1/2 Dia., Depth

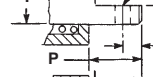


External Thread With Wrench Flats
 Add suffix -ETW to the BASIC PART NO.
 Add 8% to the BASE PRICE

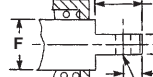


"L" Ream

Slotted Rod End
 Add suffix -SR TO THE BASIC PART NO.
 Add 8% to the BASE PRICE.

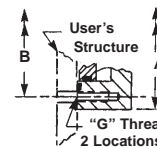


Rod End With Lug
 Add suffix -RL To The BASIC PART No.
 Add 8% to the BASE PRICE



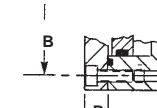
"L" Ream

MOUNTING OPTION

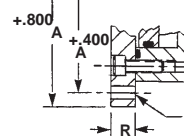


Internally threaded body
 Add suffix -T to the BASIC PART NUMBER
 There is no added cost.

OPTIONAL CONFIGURATION



Coverplate Version
 Add suffix -CP to the BASIC PART NUMBER.
 Add 15% to the BASE PRICE.



This cover is larger for flange mounting to either side.
 Add suffix -FL to the BASIC PART NUMBER.
 Add 20% to the BASE PRICE.
 Clearance holes for 10-32 Screws
 4 location.

HOW TO ORDER BASIC CYLINDERS

A BASIC PART NUMBER consists of the letter and four or five digits from the table followed by a dash number to indicate piston travel in increments of 1/10 (0.100) inch. Travel to -10 (1.000) inch is standard. Please consult the factory for longer travels.

BASIC PART NUMBER

EXAMPLE= S1705 - 8

Indicates Piston Travel Of 8/10 (0.800) Inch
 Letter & Four or five Digits From Table

HOW TO ORDER METRIC CYLINDERS

A BASIC PART NO. FOR METRIC CYLINDERS consists of a letter and four or five digits from the table with a prefix "M" and a suffix to indicate piston travel in millimeters. See inside rear cover for piston travel conversion.

EXAMPLE = M S1705 - 10mm

Travel in millimeters
 From the table
 Metric prefix

HOW TO ORDER ALL STAINLESS STEEL CYLINDERS
 Add the letter -S as a prefix to the BASIC PART NO.
 Add 40% to the BASE PRICE.

EXAMPLE = S S1705-2

BASIC PART NO.
 All Stainless Steel cylinder

HOW TO ORDER BUNA "N" SERVICE KITS

Specify the BASIC PART NO. followed by suffix -SK.

EXAMPLE= S1705 -1- SK

Indicates BUNA "N" service kit.
 BASIC PART NUMBER

HOW TO ORDER VITON SERVICE KITS

Specify the BASIC PART NO. followed by the suffix -VSK

EXAMPLE = S1705- 2 - VSK

Indicates VITON service kit.
 BASIC PART NUMBER

HOW TO ORDER CYLINDERS WITH OPTIONS
 Add options to the BASIC PART NO. as suffixes in any order.

EXAMPLE= S1705-8 CP

Optional Coverplate
 BASIC PART NO.

HOW TO ORDER CYLINDERS WITH VITON SEALS
 Add suffix -V to the BASIC PART NO.
 Add 10% to the BASE PRICE

EXAMPLE = S1705-5 - V

Indicates VITON seals
 BASIC PART NO.

