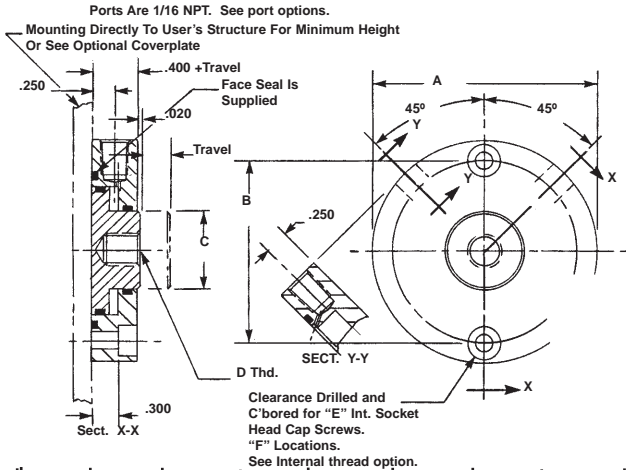


SHORT STROKE PNEUMATIC CYLINDERS - LO-PROFILE® SERIES A-SP-FM-FLATS

Double Acting-Single Ended Pistons-Side Ported-Face Mounted



SPECIFICATIONS:
 SERVICE, PLANT AIR
 M.O.P., 300 PSI
 TEMPERATURE, -40°F to +250°F

MATERIALS:
 BODY & COVER, ALUMINUM ALLOY
 PISTON, STAINLESS STEEL
 SEALS, BUNA "N" O RINGS
 FASTENERS, ALLOY STEEL

NOTES:
 Dimensions are nominal in U.S. CUSTOMARY specifications.

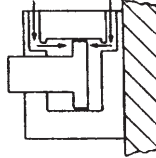
METRIC CYLINDERS are dimensionally equivalent with clearance holes, counterbores, threads & fasteners to metric specifications. See inside back cover for fastener conversion table. There is no added cost for METRIC CYLINDERS.

An air/oil mist unit is recommended for internal lubrication. Where such units are not practical, SERVICE KITS including seals & factory approved lube are available.

Cylinders may also be used in low pressure hydraulic and vacuum service.

Wrench flats may not be necessary if cylinders can be pressurized in the retracted or extended position while tightening the rod joint.

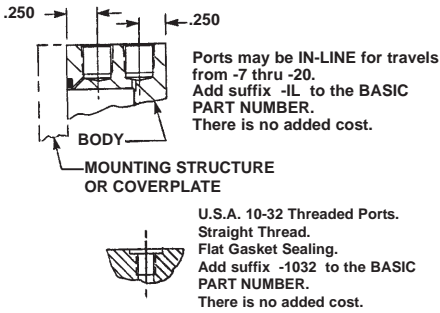
Inquiries regarding modifications to BASIC CYLINDERS are always welcome.



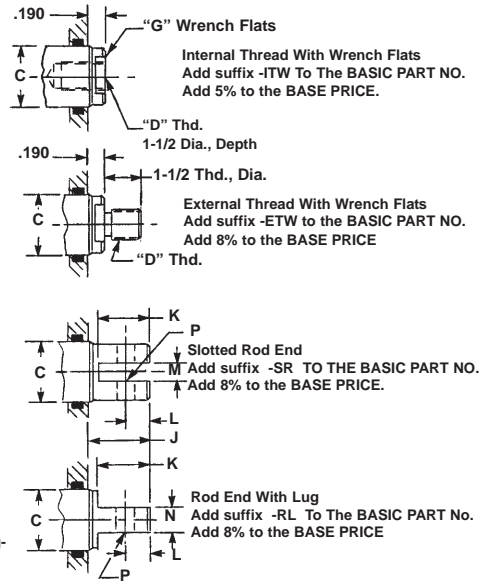
PICTORIAL

BASIC PART No.	O.D. A	BOLT CIRCLE B	ROD DIA. C	THD. D	E	F	WR. FLATS G	THICK H	LENGTH J	DEPTH K	OFF-SET L	SLOT M	TANG N	REAM P	PISTON DIA. (IN.)	EXT. AREA (SQ. IN)	RETR. AREA (SQ. IN)
S2134(-)	1.250	0.982	0.313	10-32	4-40	2	0.250	0.200	0.375	0.305	0.141	0.094	0.156	0.094	0.450	0.159	0.082
S2135(-)	1.500	1.232	0.500	1/4-28	4-40	2	0.375	0.200	0.680	0.610	0.281	0.188	0.250	0.188	0.700	0.385	0.189
S2136(-)	1.750	1.378	0.625	5/16-24	8-32	2	0.500	0.250	0.680	0.610	0.281	0.188	0.250	0.188	0.800	0.502	0.195
S2137(-)	2.000	1.628	0.750	3/8-24	8-32	2	0.563	0.250	0.883	0.813	0.375	0.250	0.375	0.250	1.050	0.866	0.424
S2138(-)	2.500	2.060	0.875	3/8-24	10-32	2	0.688	0.300	1.086	1.016	0.469	0.313	0.500	0.313	1.450	1.651	1.050
S2139(-)	3.000	2.560	1.000	3/8-24	10-32	4	0.750	0.300	1.086	1.016	0.469	0.313	0.500	0.313	1.950	2.987	2.202

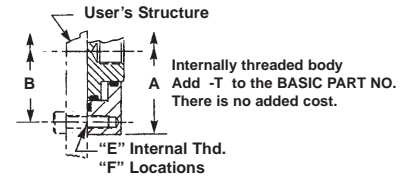
PORT OPTIONS



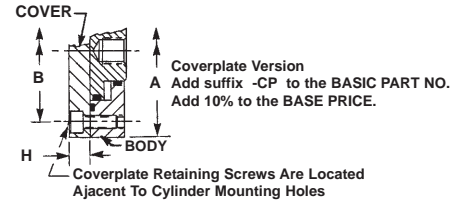
OPTIONAL ROD ENDS



OPTIONAL MOUNTING

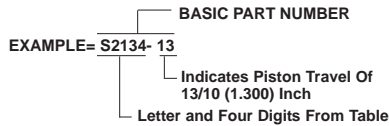


OPTIONAL CONFIGURATION



HOW TO ORDER BASIC CYLINDERS

A BASIC PART NUMBER consists of the letter and four digits followed by a dash number to indicate piston travel in increments of 1/10 (0.100) inch. Travel to -20 (2.000) is standard. Consult factory for longer travel.



HOW TO ORDER CYLINDERS WITH OPTIONS

Add options to the BASIC PART NO. as suffixes in any order.

EXAMPLE = S2134-6-ETW

- 6 - External Rod Thread
- ETW - BASIC PART NO.

HOW TO ORDER ALL STAINLESS STEEL CYLINDERS

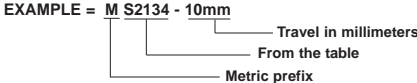
Add the letter -S as a prefix to the BASIC PART NO. Add 40% to the BASE PRICE.

EXAMPLE = S S2134-10

- S - BASIC PART NO.
- S2134-10 - All STAINLESS STEEL Cylinder

HOW TO ORDER METRIC CYLINDERS

A BASIC PART NO. FOR METRIC CYLINDERS consists of a letter and four digit number from the table with a prefix "M" and a suffix to indicate travel in millimeters. See inside rear cover for piston travel conversion.



HOW TO ORDER CYLINDERS WITH VITON SEALS

Add suffix -V to the BASIC PART NO. Add 10% to the BASE PRICE

EXAMPLE = S 2134 - 6 - V

- V - Indicates VITON Seals
- S 2134 - 6 - V - BASIC PART NO.

HOW TO ORDER BUNA "N" SERVICE KITS

Specify the BASIC PART NO. followed by suffix -SK.

EXAMPLE = S2134 -2 -SK

- SK - Indicates Buna "N" service kit.
- S2134 - 2 - SK - BASIC PART NUMBER

HOW TO ORDER VITON SERVICE KITS

Specify the BASIC PART NO. followed by suffix -VSK

EXAMPLE = S2134 -3 -VSK

- VSK - Indicates VITON service kit.
- S2134 - 3 - VSK - BASIC PART NUMBER

