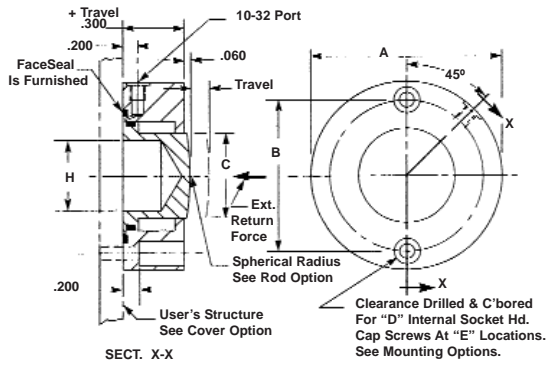


SHORT STROKE PNEUMATIC CYLINDERS - LO-PROFILE® SERIES A-SP-FM-RAMS

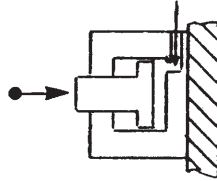
Single Acting-External Force Return-Single Ended Pistons-Side Ported-Face Mounted



SPECIFICATIONS:
 SERVICE, PLANT AIR
 M.O.P., 300 PSI
 TEMPERATURE, -40°F to +250°F

MATERIALS:
 BODY & COVER, ALUMINUM ALLOY
 PISTON, STAINLESS STEEL
 SEALS, BUNA "N" O RINGS
 FASTENERS, ALLOY STEEL

See Below On HOW TO ORDER
 Optional Materials.



NOTES:

Dimensions are nominal in U.S. CUSTOMARY specifications.

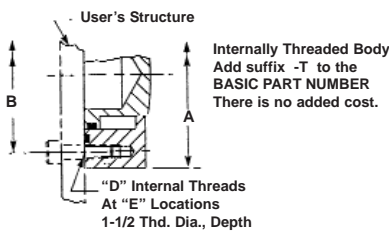
METRIC CYLINDERS are dimensionally equivalent with clearance holes, counterbores, threads & fasteners to metric specifications. See inside back cover for fastener conversion table. There is no added cost for METRIC CYLINDERS.

An air/oil mist unit is recommended for internal lubrication. Where such units are not practical, SERVICE KITS including seals & factory approved lube are available.

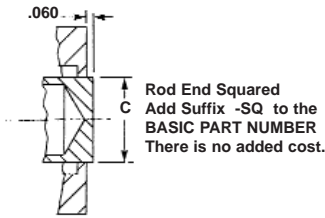
Inquiries regarding modifications to BASIC CYLINDERS are always welcome.

BASIC PART No.	O.D. A	BOLT CIRCLE B	RAM DIA. C	MTNG. HOLES D	E	COVER WIDTH F	BOSS DIA. G	DRILL H	PISTON O.D. (IN.)	NET PISTON AREA (SQ. IN)
S2140(-)	1.250	0.982	0.313	4-40	2	0.200	0.625	0.188	0.450	0.159
S2141(-)	1.500	1.232	0.500	4-40	2	0.200	0.875	0.375	0.700	0.385
S2142(-)	1.750	1.378	0.625	8-32	2	0.250	1.000	0.438	0.800	0.503
S2143(-)	2.000	1.628	0.750	8-32	2	0.250	1.250	0.563	1.050	0.866
S2144(-)	2.500	2.060	1.125	10-32	2	0.300	1.625	0.938	1.450	1.651
S2145(-)	3.000	2.560	1.625	10-32	4	0.300	2.125	1.438	1.950	2.986

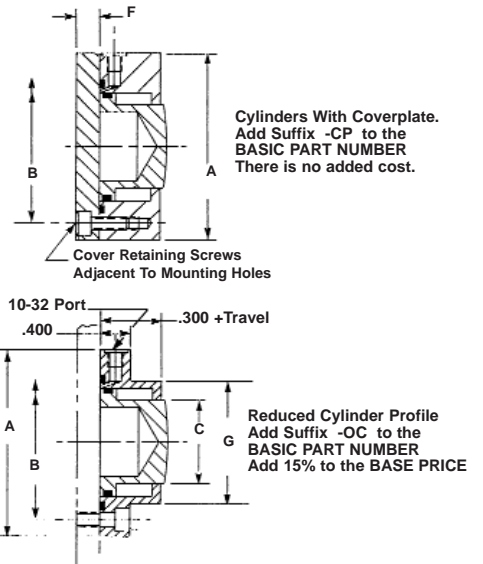
OPTIONAL MOUNTING



OPTIONAL ROD ENDS

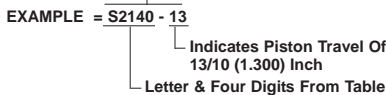


OPTIONAL CONFIGURATIONS

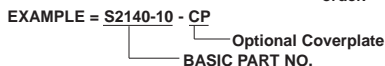


HOW TO ORDER BASIC CYLINDERS

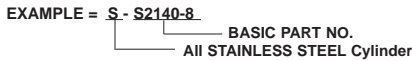
A BASIC PART NUMBER consists of the letter and four digits followed by a dash number to indicate piston travel in increments of 1/10 (0.100) Inch. Travel to -20 (2.000) is standard. Consult the Factory for longer travel.



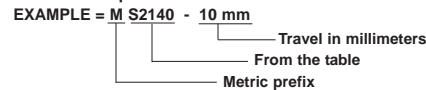
HOW TO ORDER CYLINDERS WITH OPTIONS
 Add options to the BASIC PART NO. as suffixes in any order.



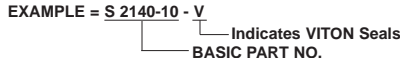
HOW TO ORDER ALL STAINLESS STEEL CYLINDERS
 Add the letter -S as a prefix to the BASIC PART NO.
 Add 40% to the BASE PRICE.



HOW TO ORDER METRIC CYLINDERS
 A BASIC PART NO. FOR METRIC CYLINDERS consists of a four or five digit number from the table with a prefix "M" and a suffix to indicate travel in millimeters. See inside rear cover for piston travel conversions.



HOW TO ORDER CYLINDERS WITH VITON SEALS
 Add suffix -V to the BASIC PART NO.
 Add 10% to the BASE PRICE.



HOW TO ORDER BUNA "N" SERVICE KITS

Specify the BASIC PART NO. followed by suffix -SK.



HOW TO ORDER VITON SERVICE KITS

Specify the BASIC PART NO. followed by the suffix -VSK

