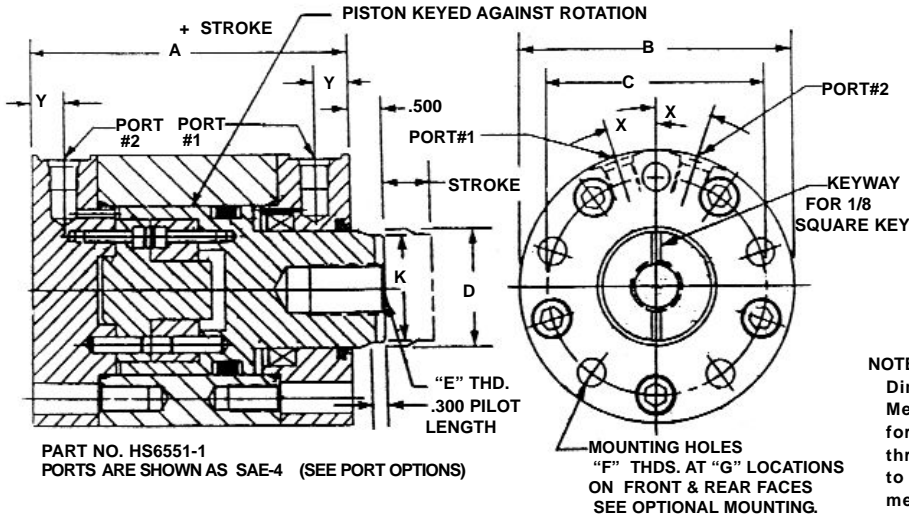


# SHORT STROKE - HYDRAULIC LINEAR ACTUATORS - HI-ENERGY® SERIES

## Double Acting - Single Ended - Pistons Keyed Against Rotation - Side Ported - Either End Mounted



**SPECIFICATIONS:**  
 SERVICE, HYDRAULIC OIL  
 M.O.P., 3000 PSI  
 TEMPERATURE, -40 TO 275 deg. F

**MATERIALS:**  
 BODY & PLAIN COVER, STAINLESS STL.  
 GUIDE COVER, BEARING BRONZE  
 PISTON, ST. STL., CHROME PLATED  
 FASTENERS, ALLOY STEEL  
 ROD SEAL, LIP STYLE  
 PISTON HEAD SEAL, "O" RING  
 BACK UP RINGS, TEFLON

**NOTES:**  
 Dimensions are nominal in U.S. Customary units.  
 Metric versions are dimensionally equivalent except for conversion in mounting details where fasteners, threads, clearance holes, counterbores and ports are to METRIC STANDARDS. There is no added cost for metric versions.

BASIC PART NO.	LENGTH A	O.D. B	B.C. C	ROD DIA. D	ROD THD. E	MTNG. THD. F	NO. PLCS G	B.C. H	INT. THD. J	PILOT DIA. K	PILOT DIA. L	DEG. X	PORT Y	BORE DIA. (IN.)	EXT. AREA (SQ.IN.)	RETR. AREA (SQ.IN.)
HS6550(-)	4.350	3.000	2.345	1.125	1/2-20	5/16-24	4	0.625	1/4-28	1.000	0.250	22.5	0.540	1.750	2.40	1.41
HS6551(-)	5.025	4.000	3.220	1.750	3/4-16	3/8-24	5	1.000	5/16-24	1.625	0.375	18	0.625	2.500	4.90	2.50
HS6552(-)	5.100	5.000	4.157	2.500	1-14	7/16-20	6	1.438	3/8-24	2.375	0.500	15	0.680	3.375	8.94	4.04
HS6553(-)	5.400	6.000	5.095	3.250	1-1/4 - 12	1/2-20	7	1.938	7/16-20	3.125	0.750	13	0.800	4.250	14.18	5.89

### HOW TO ORDER BASIC LINEAR ACTUATORS

A BASIC PART NUMBER consists of two letters & four digits followed by a dash number to indicate piston stroke in increments of 1/10 (0.100) inch.  
 Strokes to -20 (2.000) is standard.

EXAMPLE = HS6550-8  
 HS6550 - BASIC PART NUMBER.  
 8 - Piston stroke of 8/10 (0.800)  
 Two letters & four digits from the table

### HOW TO ORDER LINEAR ACTUATORS WITH OPTIONS

ADD options to the BASIC PART NUMBER as suffixes in any order.

EXAMPLE = HS6550-8-CL  
 HS6550 - BASIC PART NUMBER  
 8 - Piston stroke  
 CL - Clearance holes for mounting

### HOW TO ORDER METRIC VERSIONS

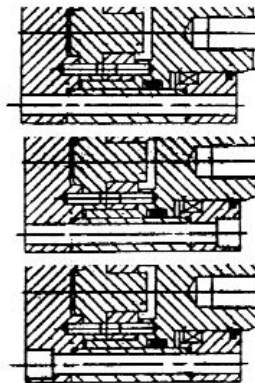
A PART NUMBER FOR METRIC VERSIONS consists of two letters and four digits from the table with a prefix "M" and a suffix to indicate piston stroke in millimeters.

EXAMPLE = M HS6550 - 10 (mm)  
 M - Metric prefix  
 HS6550 - From the table  
 10 - Stroke in millimeters

### HOW TO ORDER SERVICE KITS

Specify the COMPLETE PART NO. followed by the suffix -SK.

EXAMPLE = HS6550-8-SK  
 HS6550-8 - BASIC PART NUMBER  
 SK - Indicates service kit only.



### MOUNTING OPTIONS:

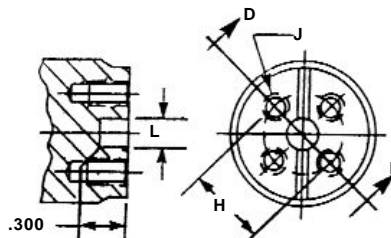
(at no added cost)

CLEARANCE HOLES FOR THRU BOLTS OF THE SIZE SHOWN AS "F" IN THE TABLE. ADD SUFFIX "-CL" TO A BASIC PART NO.

CLEARANCE HOLES WITH COUNTERBORES IN THE COVER WHICH INCORPORATES PORT NO. 1 FOR INTERNAL SOCKET HEAD CAP SCREWS OF SIZE SHOWN AS "F" IN THE TABLE. ADD SUFFIX "CB1" TO A PART NO.

CLEARANCE HOLES WITH COUNTERBORES IN THE COVER WHICH INCORPORATES PORT NO. 2 FOR INTERNAL SOCKET HEAD CAP SCREWS OF SIZE SHOWN AS "F" IN THE TABLE. ADD SUFFIX "CB2" TO A PART NO.

OPTIONAL ROD CONNECTION  
 ADD SUFFIX '-ORC' TO A PART NUMBER  
 (at no added cost)



### INTERNATIONAL PORT OPTIONS: (at no added cost)

METRIC M10 X 1 PORTS PER ISO 6149. STRAIGHT THD. WITH CAPTIVE "O" RING SEALING. ADD SUFFIX "-M10" TO A PART NUMBER.

BRITISH 1/8 - 28 BSPT PORTS. TAPERED THREAD SEALING. ADD SUFFIX "-BSPT" TO A PART NO.

BRITISH 1/8 - 28 BSPP PORTS. STRAIGHT THREADS WITH "O" RING SEALING. ADD SUFFIX "-BSPP" TO A PART NUMBER.

U.S. 1/8 - 27 PIPE THD. PORTS. TAPERED THREAD SEALING. ADD SUFFIX "- U.S. 1/8-27" TO A PART NUMBER.

