

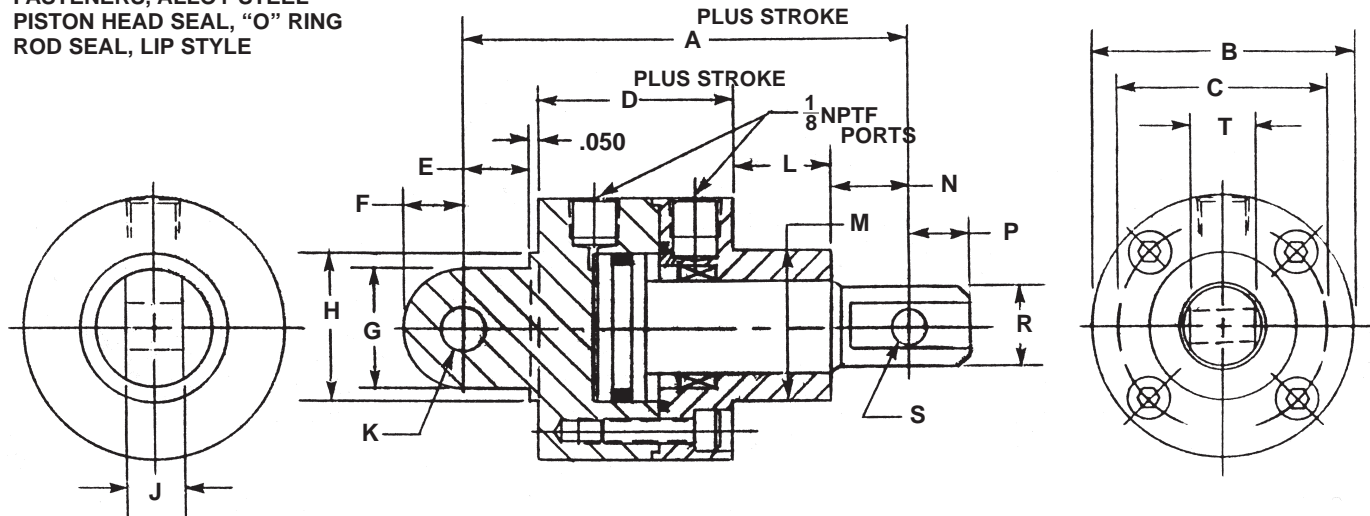
**SHORT STROKE HYDRAULIC ACTUATORS - HI-ENERGY® SERIES 1500-DA-SE-SP-LM**  
 Double Acting-Single Ended Pistons-Side Ported-Lug Mounted

**SPECIFICATIONS:**

SERVICE, HYDRAULIC OIL  
 M.O.P. 1500 PSI  
 TEMPERATURE, -40 TO + 275 DEG. F.  
**MATERIALS:**  
 COVER, BEARING BRONZE  
 BODY & PISTON, STAINLESS STEEL  
 FASTENERS, ALLOY STEEL  
 PISTON HEAD SEAL, "O" RING  
 ROD SEAL, LIP STYLE

**NOTES:**

DIMENSIONS ARE NOMINAL IN U.S.A. CUSTOMARY SPECIFICATIONS.  
 METRIC VERSIONS ARE DIMENSIONALLY EQUIVALENT EXCEPT FOR  
 CONVERSIONS IN MOUNTING DETAILS WHERE THREADS, FASTENERS,  
 CLEARANCE HOLES AND COUNTERBORES ARE TO METRIC STANDARDS.  
 THERE IS NO ADDED COST FOR METRIC VERSIONS.



| BASIC PART NO. | A     | B     | C     | D     | E     | F     | G     | H     | J     | K     | L     | M     | N     | P     | R     | S     | T     | EXT AREA (SQ.IN.) | RETR AREA (SQ.IN.) |
|----------------|-------|-------|-------|-------|-------|-------|-------|-------|-------|-------|-------|-------|-------|-------|-------|-------|-------|-------------------|--------------------|
| S6558(-)-LS    | 2.452 | 1.500 | 1.142 | 1.253 | 0.375 | 0.313 | 0.625 | 0.750 | 0.313 | 0.250 | 0.433 | 0.750 | 0.341 | 0.189 | 0.378 | 0.156 | 0.313 | 0.428             | 0.277              |
| S6559(-)-LS    | 2.854 | 1.750 | 1.358 | 1.303 | 0.500 | 0.438 | 0.875 | 1.000 | 0.438 | 0.313 | 0.590 | 0.938 | 0.411 | 0.241 | 0.482 | 0.188 | 0.375 | 0.672             | 0.423              |
| S6560(-)-LS    | 3.122 | 2.000 | 1.575 | 1.353 | 0.500 | 0.438 | 0.875 | 1.125 | 0.438 | 0.375 | 0.745 | 1.125 | 0.474 | 0.304 | 0.608 | 0.250 | 0.500 | 0.982             | 0.610              |
| S6561(-)-LS    | 3.387 | 2.250 | 1.832 | 1.403 | 0.563 | 0.500 | 1.000 | 1.250 | 0.500 | 0.375 | 0.828 | 1.250 | 0.543 | 0.356 | 0.712 | 0.313 | 0.600 | 1.470             | 0.951              |
| S6562(-)-LS    | 3.952 | 2.500 | 2.067 | 1.453 | 0.750 | 0.625 | 1.250 | 1.563 | 0.500 | 0.500 | 1.062 | 1.563 | 0.637 | 0.450 | 0.900 | 0.375 | 0.750 | 2.010             | 1.226              |

NOM. FORCE (lbs) = PRESSURE (psi) times AREA (sq.in.)

**ORDERING INFORMATION:**

**HOW TO ORDER BASIC CYLINDERS:**

A BASIC PART NUMBER consists of the letter "S" and four digits followed by a dash number to indicate piston stroke in increments of 1/10 (0.100) inch followed by the suffix -LS. Strokes to -20 (2.000) are standard products.

EXAMPLE = S6558-5-LS  
 S — BASIC PART NO.  
 6558 — Lip Seal Suffix  
 5 — Indicates Piston Stroke  
 LS — Letter & four digits from the table

**HOW TO ORDER ALL STAINLESS STEEL CYLINDERS:**

Add another letter "S" as a prefix to a BASIC PART NO.  
 Add 20% to the BASE PRICE.

EXAMPLE = S S6558-5-LS  
 S — BASIC PART NO.  
 S — All Stainless Steel Prefix

**HOW TO ORDER METRIC VERSIONS:**

A BASIC PART NO. FOR THE METRIC VERSIONS consists of the letter "S" and a four digit number from the table with a prefix "M" followed by a dash number to indicate stroke in millimeters followed by the dash number " - LS". Please see inside rear cover for metric thread and stroke conversions. There is no added cost.

EXAMPLE = M - S6558 - 20 - LS  
 M — Metric prefix  
 S — From the table  
 6558 — Stroke in millimeters  
 20 — Suffix

**HOW TO ORDER SERVICE KITS:**

Specify the complete part number followed by the suffix "-SK".  
 EXAMPLE = S6558-LS-SK

S6558-LS — Complete part number.  
 SK — Indicates service kit only.

