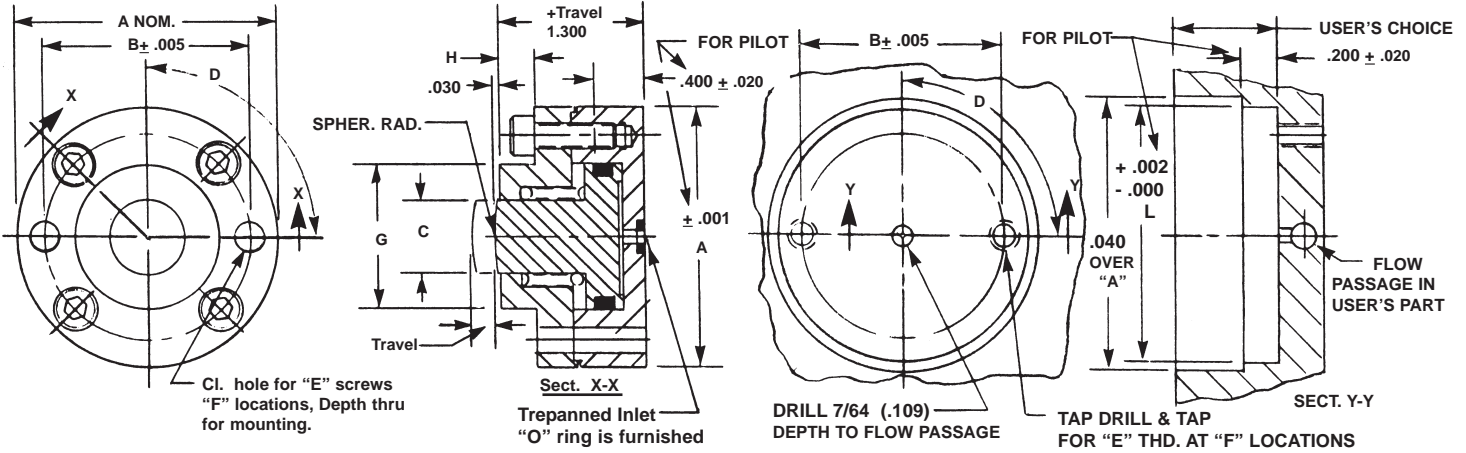


SHORT STROKE HYDRAULIC CYLINDERS, HI-ENERGY® SERIES 125-LS-ET-PM
 Single Acting-Spring Retracted-Single Ended Pistons-Trepan Ported-Pocket Mounted™

PRODUCT DETAILS:

SUGGESTED MOUNTING DETAILS:



BASIC PART NO.	BOLT ROD				MTNG. SCREWS NO.	BOSS				WRENCH FLATS			PISTON O.D. (IN.)	PISTON AREA (SQ.IN.)
	O.D. A	CIRCLE DIA. B	DIA. C	DEG. D		DIA. G	H	J	K	L				
S6109(-)	1.250	0.906	0.250	90	8-32	2	0.563	0.550	8-32	0.200	1.253	0.485	0.185	
S6110(-)	1.375	1.004	0.313	90	8-32	2	0.625	0.550	10-32	0.250	1.378	0.613	0.296	
S6111(-)	1.500	1.142	0.375	90	8-32	2	0.750	0.550	1/4-28	0.313	1.503	0.738	0.428	
S6112(-)	1.625	1.260	0.438	90	8-32	2	0.844	0.550	5/16-24	0.375	1.628	0.863	0.585	
S6113(-)	1.750	1.358	0.563	90	10-32	2	0.905	0.480	3/8-24	0.438	1.753	0.925	0.672	
S6114(-)	1.875	1.457	0.563	90	10-32	2	1.000	0.480	3/8-24	0.438	1.878	0.993	0.774	
S6115(-)	2.000	1.575	0.563	90	10-32	2	1.125	0.480	3/8-24	0.438	2.003	1.118	0.982	
S6116(-)	2.125	1.713	0.563	90	10-32	2	1.281	0.480	3/8-24	0.438	2.128	1.243	1.213	
S6117(-)	2.250	1.831	0.563	60	10-32	3	1.375	0.480	3/8-24	0.438	2.253	1.368	1.470	
S6118(-)	2.375	1.949	0.563	60	10-32	3	1.500	0.480	3/8-24	0.438	2.378	1.493	1.751	
S6119(-)	2.500	2.067	0.563	60	10-32	3	1.625	0.480	3/8-24	0.438	2.503	1.600	2.010	

Nom. Force (lbs) = Pressure (psi) times Area (sq.in.)

SPECIFICATIONS:

SERVICE, HYDRAULIC OIL
 M.O.P. 1500 PSI.
 TEMPERATURE, -40 TO +200 deg. F.
 MATERIALS:
 BODY & COVER, BEARING BRONZE
 PISTON, STAINLESS STEEL
 SPRINGS, STAINLESS STEEL
 SEALS, BUNA "N" O RINGS
 FASTENERS, ALLOY STEEL

ORDERING INFORMATION:

HOW TO ORDER BASIC CYLINDERS:

A BASIC PART NUMBER consists of the letter "S" and four digits followed by a dash number to indicate piston travel in increments of 1/10 (0.100) inch. Travel to -10 (1.000) is standard.

EXAMPLE = S6109 - 4
 S - BASIC PART NUMBER
 6109 - Indicates 4/10 (0.400) Travel
 4 - Letter and four digits from the table

HOW TO ORDER CYLINDERS WITH OPTIONS:

Add options to the BASIC PART NUMBER as suffixes in any order.

EXAMPLE = S6109 - 4 - ETW
 ETW - External rod thread option
 S6109 - 4 - BASIC PART NUMBER

HOW TO ORDER ALL STAINLESS STEEL CYLINDERS:

Add another letter "S" as a prefix to a BASIC PART NO. Add 20% to the BASE PRICE

EXAMPLE = S - S6109 - 4
 S - All stainless steel prefix
 S6109 - 4 - BASIC PART NUMBER.

HOW TO ORDER METRIC CYLINDERS:

A BASIC PART NUMBER FOR METRIC CYLINDERS consists of the letter "S" and a four digit number from the table with a prefix "M" and a suffix to indicate travel in millimeters. Please see inside rear cover for piston travel conversion. There is no added cost.

EXAMPLE = M S6109 - 10mm
 10mm - Travel in millimeters
 S6109 - From the table
 M - Metric prefix

HOW TO ORDER CYLINDERS WITH SEALS FOR TEMPERATURES TO 275 deg. F.

Add the letter "H" as a prefix to a BASIC PART NO. Add 10% to the BASE PRICE.

EXAMPLE = HS6109 - 4
 H - High Temperature Seals
 S6109 - 4 - BASIC PART NUMBER

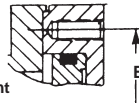
HOW TO ORDER SERVICE KITS:

Specify the complete part number followed by the suffix "SK".

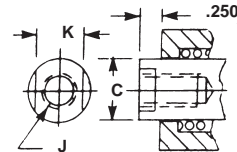
EXAMPLE = HS6109 - 4 - SK
 SK - Indicates SERVICE KIT
 HS6109 - 4 - BASIC PART NUMBER

OPTIONAL MOUNTING STYLE:

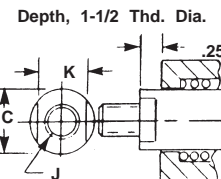
"E" internally threaded holes at "F" locations in the rear mounting face. Add suffix -R to the BASIC PART NO. There is no added cost. Intended as an option where attachment from the rear is preferred.



OPTIONAL ROD ENDS:



Internal Thd. With Wrench Flats. Add Suffix -ITW To The BASIC PART NUMBER. Add 5% To The BASE PRICE.



External Thd. With Wrench Flats. Add Suffix -ETW To The BASIC PART NUMBER. Add 8% To The BASE PRICE.

Depth, 1-1/2 Thd. Dia.
 Length, 1-1/2 Thd. Dia.

NOTES:

Dimensions are nominal in U.S. Customary units. Metric versions are dimensionally equivalent except for conversion in mounting details where fasteners, threads, clearance holes & countbores are to metric standards. Please see inside rear cover for a table of U.S. Customary to Metric fastener conversion. There is no added cost for this metric modification. Spring force in BASIC CYLINDERS is sufficient to fully retract pistons. Please consult the Factory where higher spring force is required. All inquiries regarding modifications to standard cylinders are welcome.

