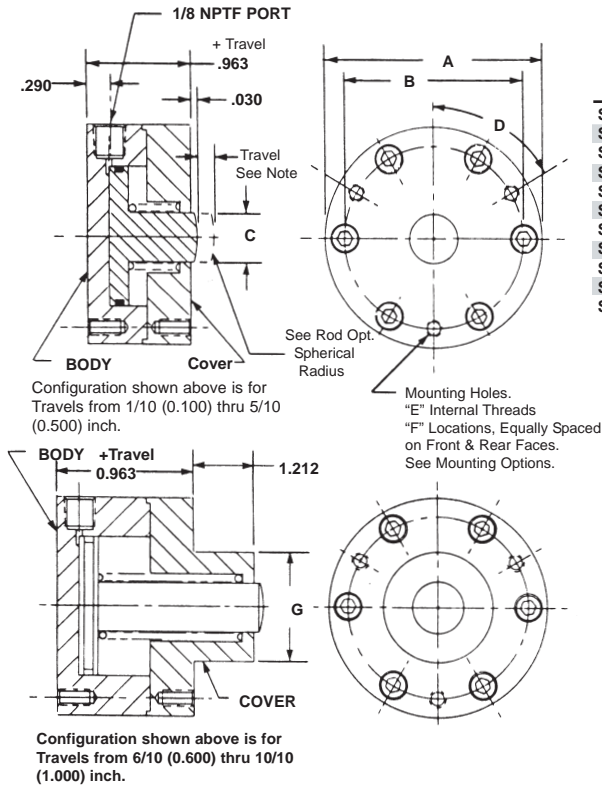


SHORT STROKE HYDRAULIC CYLINDERS, HI-ENERGY® SERIES 125-LS-SP-FM

Single Acting-Spring Retracting-Single Ended Pistons-Side Ported-Either Face Mounted



BASIC PART NO.	O.D. A	BOLT CIRCLE B	ROD DIA. C	DEG D	MTNG. SCREWS E	NO. F	BOSS DIA. G	THD. H	WRENCH FLATS J	PISTON O.D. (IN)	PISTON AREA (SQ.IN.)
S3500(-)	1.250	0.906	0.250	90	4-40	2	0.660	8-32	0.200	0.485	0.185
S3501(-)	1.375	1.004	0.313	90	8-32	2	0.676	10-32	0.250	0.613	0.296
S3502(-)	1.500	1.142	0.375	90	8-32	2	0.814	1/4-28	0.313	0.738	0.428
S3503(-)	1.625	1.260	0.438	90	8-32	2	0.914	5/16-24	0.375	0.863	0.585
S3504(-)	1.750	1.358	0.563	90	10-32	2	0.969	3/8-24	0.438	0.925	0.672
S3505(-)	1.875	1.457	0.563	90	10-32	2	1.068	3/8-24	0.438	0.993	0.774
S3506(-)	2.000	1.575	0.563	90	10-32	2	1.186	3/8-24	0.438	1.118	0.982
S3507(-)	2.125	1.713	0.563	90	10-32	2	1.324	3/8-24	0.438	1.243	1.213
S3508(-)	2.250	1.831	0.563	60	10-32	3	1.442	3/8-24	0.438	1.368	1.470
S3509(-)	2.375	1.949	0.563	60	10-32	3	1.560	3/8-24	0.438	1.493	1.751
S3510(-)	2.500	2.067	0.563	60	10-32	3	1.625	3/8-24	0.438	1.600	2.010

Nom. Force (lbs) = Pressure (psi) times Area (sq.in.)

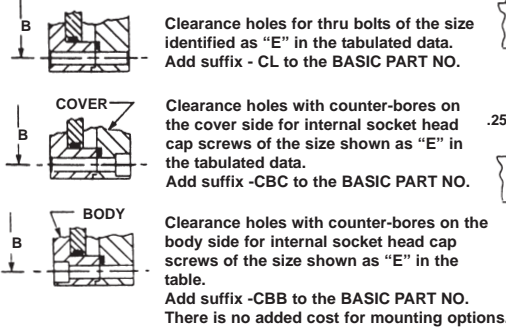
SPECIFICATIONS:

SERVICE, HYDRAULIC OIL
M.O.P. 1500 PSI
TEMPERATURE, -40 to +200 deg. F
MATERIALS:
BODY & COVER, BEARING BRONZE
PISTON, STAINLESS STEEL
FASTENERS, ALLOY STEEL
SEAL, "O" RING
SPRINGS, STAINLESS STEEL

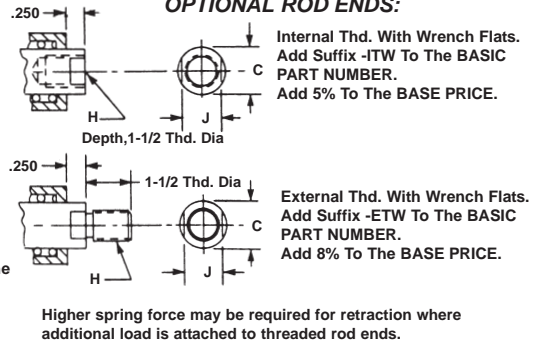
NOTES:

Dimensions are nominal in U.S. Customary units. Metric versions are dimensionally equivalent except for conversion in mounting details where fasteners, threads, clearance holes & counter-bores are to metric standards. Please see inside rear cover for a table of U.S. Customary to Metric fastener conversion. There is no added cost for this metric modification. Spring force in BASIC CYLINDERS is sufficient to fully retract pistons. Please consult the Factory where higher spring force is required. All inquiries regarding modifications to standard cylinders are welcome.

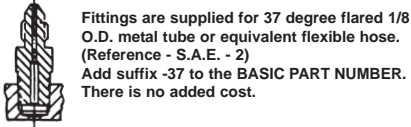
OPTIONAL MOUNTING STYLE:



OPTIONAL ROD ENDS:



OPTIONAL FITTING:



ORDERING INFORMATION:

HOW TO ORDER BASIC CYLINDERS:

A BASIC PART NUMBER consists of the letter "S" and four digits followed by a dash number to indicate piston travel in increments of 1/10 (0.100) inch. Travel to -10 (1.000) is standard.

EXAMPLE = S3500 - 4
BASIC PART NUMBER.
Indicates 4/10 (0.400) Travel.
Letter and four digits from the table.

HOW TO ORDER CYLINDERS WITH OPTIONS:

Add options to the BASIC PART NUMBER as suffixes in any order.
EXAMPLE = S3500 - 4 - ETW
External rod thread option.
BASIC PART NUMBER.

HOW TO ORDER METRIC CYLINDERS:

A BASIC PART NUMBER FOR METRIC CYLINDER consists of the letter "M" and a four digit number from the table with a prefix "M" and a suffix to indicate travel in millimeters. Please see inside cover for piston travel conversion. There is no added cost.

EXAMPLE = M S3500 - 10
Metric prefix
Travel in millimeters
From the table

HOW TO ORDER ALL STAINLESS STEEL CYLINDERS:

Add another letter "S" as a prefix to a BASIC PART NO. Add 20% to the BASE PRICE.
EXAMPLE = S-S3500-4
All Stainless Steel Prefix
BASIC PART NUMBER

HOW TO ORDER SERVICE KITS:

Specify the complete part number followed by the suffix "SK".

EXAMPLE = S3500-4-SK
Indicates SERVICE KIT
Complete part number

