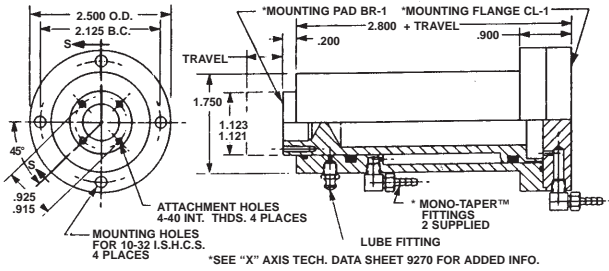


# "X" AXIS B·A·S·E® TRANSPORTERS - SER. 2

## TYPE NO. S2626 - ( ) WITHOUT ANTI-ROTATION KEY



### APPLICATIONS

TYPE S2626 ( ) "X" AXIS TRANSPORTERS are units with pistons free to "float" in angular rotation about the central axis. Use includes low cost robotic applications where a precise angular position is not essential on the approach & withdrawal of an end effector. An example is an application where a three finger gripper, mounted in-line, picks up and places a dowel pin or similar body of revolution by gripping from the end.

TYPE S2626 - ( ) "X" AXIS TRANSPORTERS are offered with piston travel increments of 10/10 (1.000) inches thru a maximum of 10 inches.

### ASSEMBLY WEIGHT, APPROX.

1.4 lb. + .07 lb. for each travel increment of one inch.

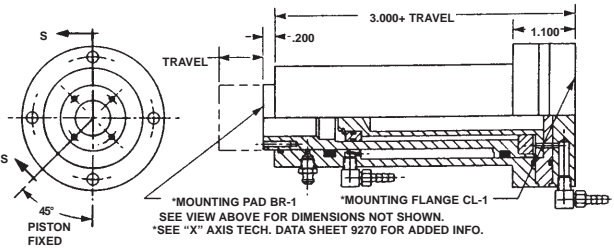
### SPECIFICATIONS:S

SERVICE, PLANT AIR  
M.O.P., 150PSI (10 BARS)  
M.O.T., 250° F. (120° C)  
EXT. PISTON AREA, 1.76 Sq. In.  
RET. PISTON AREA, 0.76 Sq. In.  
EXT. PISTON FORCE, 140 Lb. @80 PSI  
RET. PISTON FORCE, 60 Lb. @90 PSI  
RATED LOAD NORMAL TO THE MAJOR AXIS IS 5 POUNDS.  
REPEATABILITY ALONG THE MAJOR AXIS IS ±.002 INCHES.  
MATERIALS:  
BODY & PISTON, HARD ANODIZED ALUMINUM ALLOY.  
COVERPLATE, ALUMINUM ALLOY  
SEALS, BUNA "N" O RINGS  
FASTENERS, ALLOY STEEL I.S.H.C.S.  
FITTINGS, BRASS

### SPECIFICATIONS:S

SERVICE, PLANT AIR  
M.O.P., 150PSI (10 BARS)  
M.O.T., 250° F. (120° C)  
EXT. PISTON AREA, 1.16 Sq. In.  
RET. PISTON AREA, 0.76 Sq. In.  
EXT. PISTON FORCE, 90 Lb. @80 PSI  
RET. PISTON FORCE, 60 Lb. @80 PSI  
RATED LOAD NORMAL TO THE MAJOR AXIS IS 5 POUNDS.  
REPEATABILITY ALONG THE MAJOR AXIS IS ±.002 INCHES.  
RATED TORQUE, 10 INCH POUND.  
ANGULAR DISPLACEMENT WITHOUT TORQUE IS ±1 DEGREE.  
ANGULAR DISPLACEMENT WITH RATED TORQUE IS ±3 DEGREES.  
MATERIALS:  
BODY & PISTON, HARD ANODIZED ALUMINUM ALLOY.  
COVERPLATES, ALUMINUM ALLOY  
STRUT, STAINLESS STEEL  
FOLLOWER, BEARING BRONZE  
SEALS, BUNA "N" O RINGS  
FASTENERS, ALLOY STEEL I.S.H.C.S.  
FITTINGS, BRASS

## TYPE NO. S2627 - ( ) WITH NON - ROTATING PISTON



### APPLICATIONS

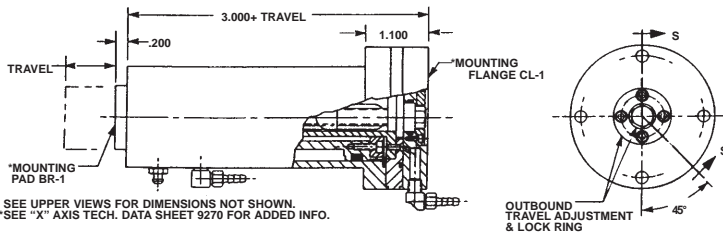
TYPE S2627 ( ) "X" AXIS TRANSPORTERS are used for low cost pick & place motions along a translating axis in applications where the transporter piston is keyed against rotation. Typical applications include those where the gripper must be aligned to pick or place an object in a fixed location such as entering a confined space or gripping an object in a specific manner. TYPE S2627 ( ) "X" AXIS TRANSPORTERS are also required when picking or placing an object which has an overhanging moment which would produce rotation on an un-keyed piston.

TYPE S2627 - ( ) "X" AXIS TRANSPORTERS are offered with piston travel increments of 10/10 (1.000) inches thru a maximum of 10 inches.

### ASSEMBLY WEIGHT, APPROX.

2.0 lb.+ .075 lb. for each travel increment of one inch.

## TYPE NO. S2624 - ( ) WITH NON - ROTATING PISTON & ADJUSTABLE STOP ON AFT END



### APPLICATIONS

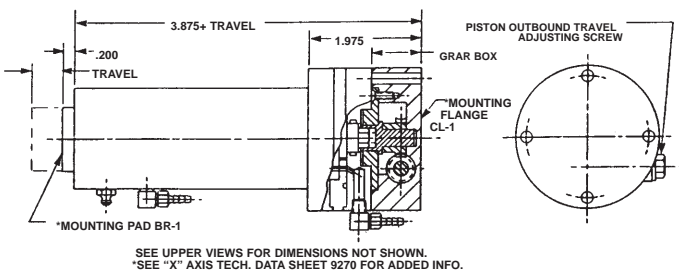
TYPE S2624 ( ) "X" AXIS TRANSPORTERS are identical to TYPE S2627 ( ) with the addition of a travel adjustment to set outbound travel position. A fine adjustment (24 TPI) is provided and outbound travel can be set & locked anywhere within the travel range by removing the lock ring, making an adjustment & re-installing the lock ring.

Travel choices & specifications are the same as TYPE S2627 ( ) "X" AXIS TRANSPORTERS.

### ASSEMBLY WEIGHT, APPROX.

2.0 lb.+ .075 lb. for each travel increment of one inch.

## TYPE NO. S2625 - ( ) WITH NON - ROTATING PISTON & ADJUSTABLE STOP ON THE SIDE



### APPLICATIONS

TYPE S2625 ( ) "X" AXIS TRANSPORTERS are identical to TYPE S2624 ( ) TRANSPORTERS except for the addition of a GEAR BOX which provides self locking adjustment from the side. The gear box adds 0.875 inches to the overall length as shown.

Travel choices & specifications are the same as TYPE S2627 ( ) "X" AXIS TRANSPORTERS.

### ASSEMBLY WEIGHT, APPROX.

2.5 lb.+ .075 lb. for each travel increment of one inch.

### HOW TO ORDER BASIC "X" AXIS TRANSPORTERS

A BASIC PART NUMBER consists of the TYPE NUMBER followed by a dash number to indicate piston travel in increments of 10/10 (1.000) inches.

EXAMPLE: S2626 - 60  
Indicates piston travel of 60/10 (6.000)  
Identifies "X" AXIS TRANSPORTER by TYPE.

### HOW TO ORDER METRIC TRANSPORTERS

A BASIC METRIC PART NUMBER consists of the TYPE NUMBER with a prefix "M" and a suffix to indicate piston travel in millimeters.

EXAMPLE: M S2626 - 254  
Travel in millimeters (equivalent to 10 in.)  
TYPE NUMBER  
Metric Prefix

METRIC TRANSPORTERS are dimensionally equivalent to U.S. CUSTOMARY TRANSPORTERS except mounting holes, counterbores, threads and fasteners are converted to Metric Standards. There is no added cost for Metric Versions.

### HOW TO ORDER "X" AXIS TRANSPORTERS WITH VITON SEALS

Add the suffix "V" to the BASIC PART NUMBER.

EXAMPLE: S2626 - 60 - V  
Indicates the Viton Seal Option  
BASIC PART NUMBER.

### HOW TO ORDER BUNA "N" SERVICE KITS

Add the suffix "SK" to the BASIC PART NUMBER

EXAMPLE: S2626 - 60 - SK  
Indicates a Buna "N" service kit  
BASIC PART NUMBER.

### HOW TO ORDER VITON SERVICE KITS

Add the suffix "VSK" to the BASIC PART NUMBER

EXAMPLE: S2626 - 60 - VSK  
Indicates a VITON service kit  
BASIC PART NUMBER.

