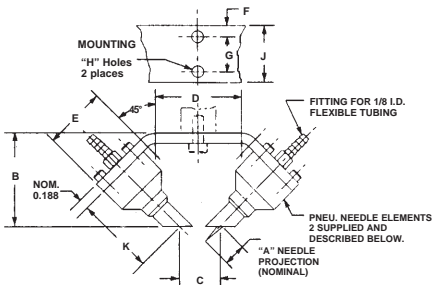


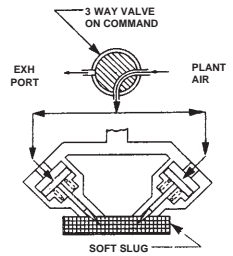
# B•A•S•E® SOFT SLUG GRIPPERS

## INWARD THRUSTING VERSION



PART No.	A	B	C	D	E	F	G	H	J	K	Pneumatic Needle Elements
4525	0.100	1.335	0.528	0.750	1.100	0.188	0.625	0.206	1.000	0.945	4471
4526	0.300	1.618	0.712	1.500	1.100	0.188	0.625	0.206	1.000	1.345	4472
4527	0.500	2.007	1.060	2.625	1.100	0.188	0.625	0.206	1.000	1.895	4473
4531	0.100	1.857	0.409	1.375	1.600	0.375	0.750	0.266	1.500	1.433	4474
4532	0.300	2.000	0.423	1.688	1.600	0.375	0.750	0.266	1.500	1.633	4475
4533	0.500	2.282	0.421	2.250	1.600	0.375	0.750	0.266	1.500	2.033	4476

## SCHEMATIC:

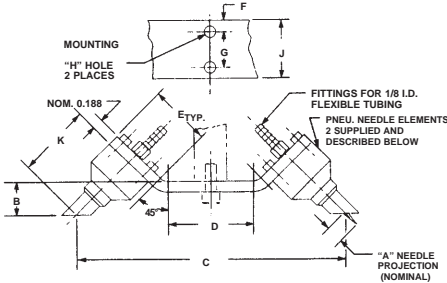


## SPECIFICATIONS:

SERVICE MEDIUM, PLANT AIR  
 M.O.P., 150 PSI (10 BARS)  
 M.O.T., +250° F. (120°C.)  
 MATERIALS.

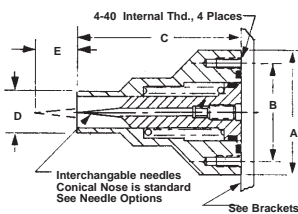
BODY & PISTON, STAINLESS STEEL  
 SPRING, MUSIC WIRE OR STAINLESS  
 SEALS, BUNA "N" O RINGS  
 BRACKET, STEEL OR STAINLESS STL.  
 NEEDLE, ALLOY STEEL, HARDENED  
 FASTENERS, ALLOY STEEL I.S.H.C.S.

## OUTWARD THRUSTING VERSION



PART No.	A	B	C	D	E	F	G	H	J	K	Pneumatic Needle Elements
4528	0.100	0.321	3.464	0.750	1.100	0.188	0.625	0.206	1.000	0.945	4471
4529	0.300	0.604	4.780	1.500	1.100	0.188	0.625	0.206	1.000	1.345	4472
4530	0.500	0.993	6.682	2.625	1.100	0.188	0.625	0.206	1.000	1.895	4473
4534	0.100	0.489	5.134	1.375	1.600	0.375	0.750	0.266	1.500	1.433	4474
4535	0.300	0.631	5.730	1.688	1.600	0.375	0.750	0.266	1.500	1.633	4475
4536	0.500	0.914	6.858	2.250	1.600	0.375	0.750	0.266	1.500	2.033	4476

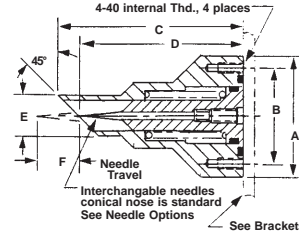
## 90° PNEUMATIC NEEDLE ELEMENTS



PART No.	A	B	C	D	E	*Net Thrust Force
4465	1.000	0.688	0.945	0.375	0.100	5 Lb.
4466	1.000	0.688	1.345	0.375	0.300	5 Lb.
4467	1.000	0.688	1.895	0.375	0.500	5 Lb.
4468	1.500	1.188	1.433	0.500	0.100	15 Lb.
4469	1.500	1.188	1.633	0.500	0.300	15 Lb.
4470	1.500	1.188	2.033	0.500	0.500	15 Lb.

\* Net thrust force is pressure force minus spring return force at an inlet pressure of 80 PSI.

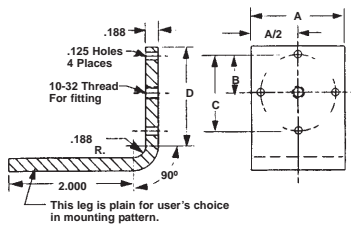
## 45° PNEUMATIC NEEDLE ELEMENTS



PART No.	A	B	C	D	E	F	*Net Thrust Force
4471	1.000	0.688	1.133	0.945	0.375	0.100	5 Lb.
4472	1.000	0.688	1.533	1.345	0.375	0.300	5 Lb.
4473	1.000	0.688	2.083	1.895	0.375	0.500	5 Lb.
4474	1.500	1.188	1.683	1.433	0.500	0.100	15 Lb.
4475	1.500	1.188	1.883	1.633	0.500	0.300	15 Lb.
4476	1.500	1.188	2.283	2.033	0.500	0.500	15 Lb.

\* Net thrust force is pressure force minus spring return force at an inlet pressure of 80 PSI.

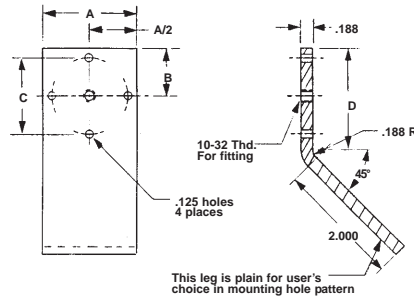
## 90° BRACKETS



BRACKET No.	A	B	C	D
4478	1.000	0.500	0.688	1.100
4480	1.500	0.750	1.188	1.600

For mounting 90° pneumatic needle elements

## 45° BRACKETS



BRACKET No.	A	B	C	D
4477	1.000	0.500	0.688	1.100
4479	1.500	0.750	1.188	1.600

For mounting 45° pneumatic needle elements

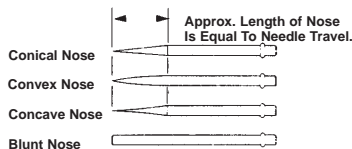
## APPLICATIONS:

FOR USE IN HANDLING LIGHTWEIGHT SHEETS AND SLUGS OF RESILIENT MATERIALS SUCH AS STYROFOAM, RUBBER, PLASTIC, PAPER AND CLOTH WHERE FUNCTIONAL OR COSMETIC EFFECT FROM IMPLEMENT IS NOT CRITICAL.

## CUSTOMER ASSISTANCE:

SEND A SAMPLE OF YOUR PART, WE WILL DETERMINE FEASIBILITY AND RESPOND PROMPTLY.

## OPTIONAL NEEDLES:



CONICAL NEEDLES ARE SUPPLIED UNLESS OTHERWISE SPECIFIED.

HOW TO ORDER GRIPPERS & NEEDLE ELEMENTS WITH OPTIONAL NEEDLES

Specify the BASIC PART NUMBER followed by the suffix indicating needle style.

EXAMPLE: 4525 - CONCAVE

Needle style option  
 BASIC PART NUMBER

HOW TO ORDER SPARE NEEDLES

To order spare needles, please call for the needle style and indicate the part number of the unit for which the needles are intended.

EXAMPLE: CONCAVE NEEDLES FOR 4525