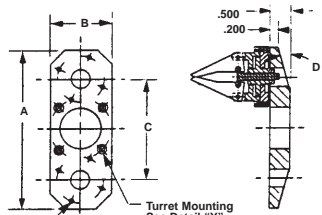


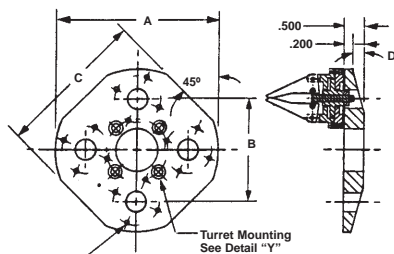
B•A•S•E® TURRETS - SERIES 2

AXIAL TURRETS



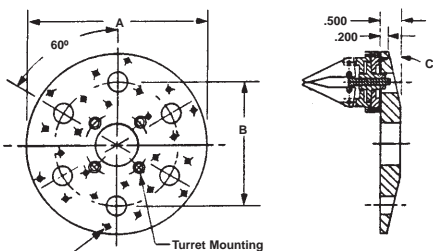
Gripper Mounting Pads AR-1 Thru AR-4 For Mounting Series 2 Grippers, 2 Places. See Tech. Data Sheet No. 9265.

PART No.	Gripper Pad Identification	A	B	C	D	*Wt.
3460	AR-1	4.250	1.600	2.700	15°	3.3
3461	AR-3	5.400	2.120	3.300	10°	5.9
3462	AR-4	6.400	2.600	3.800	7 1/2°	7.5



Gripper Mounting Pads AR-1 Thru AR-4 For Mounting Series 2 Grippers, 4 Places. See Tech. Data Sheet No. 9265.

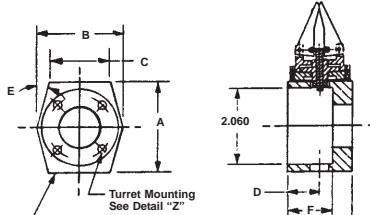
PART No.	Gripper Pad Identification	A	B	C	D	*Wt.
3463	AR-1	4.250	2.700	3.600	15°	8.0
3464	AR-3	3.400	3.300	4.400	10°	12.2
3465	AR-4	6.400	3.800	5.300	7 1/2°	17.5



Gripper Mounting Pads AR-1 Thru AR-4 For Mounting Series 2 Grippers, 6 Places. See Tech. Data Sheet No. 9265.

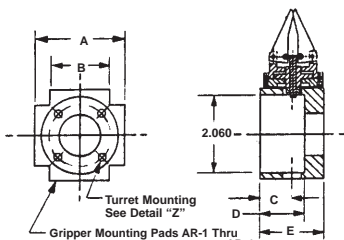
PART No.	Gripper Pad Identification	A	B	C	*Wt.
3466	AR-1	4.800	3.250	12 1/2°	5.7
3467	AR-3	6.400	4.300	7 1/2°	11.2
3468	AR-4	7.900	5.250	7 1/2°	26.4

RADIAL TURRETS



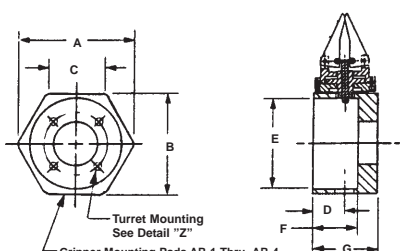
Gripper Mounting Pads AR-1 Thru AR-4 For Mounting Series 2 Grippers, 2 Places. See Data Sheet No. 9265

PART No.	Gripper Pad Identification	A	B	C	D	E	F	G	*Wt.
3469	AR-1	2.370	2.256	1.620	0.850	15°	1.200	1.700	5.1
3470	AR-3	2.370	2.200	2.200	1.100	0°	1.700	2.200	8.2
3471	AR-4	2.600	2.600	2.600	1.350	0°	2.200	2.700	16.3



Gripper Mounting Pads AR-1 Thru AR-4 For Series 2 Grippers, 4 Places. See Data Sheet No. 9265

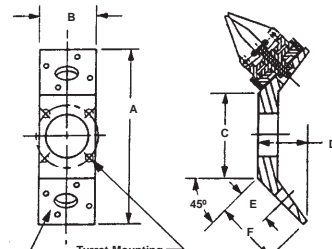
PART No.	Gripper Pad Identification	A	B	C	D	E	*Wt.
3472	AR-1	2.370	1.620	0.850	1.200	1.700	7.4
3473	AR-3	2.370	2.370	1.100	1.700	2.200	9.4
3474	AR-4	2.600	2.600	1.350	2.200	2.700	16.0



Gripper Mounting Pads AR-1 Thru AR-4 For Mounting Series 2 Grippers, 6 Places. See Tech. Data Sheet No. 9265.

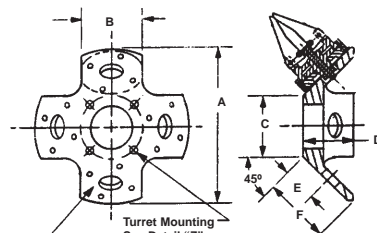
PART No.	Gripper Pad Identification	A	B	C	D	E	F	G	*Wt.
3475	AR-1	2.980	2.680	1.303	0.850	2.400	1.200	1.700	7.0
3476	AR-3	3.980	3.540	1.820	1.100	3.140	1.700	2.200	15.4
3477	AR-4	4.980	4.400	2.330	1.350	4.000	2.200	2.700	26.5

45° CANTED TURRETS



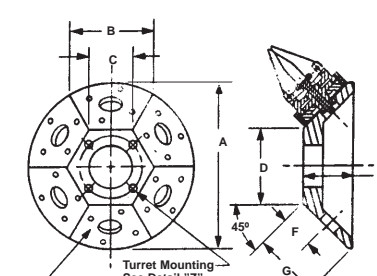
Gripper Mounting Pads AR-1 Thru AR-4 For Mounting Series 2 Grippers, 2 Places. See Data Sheet No. 9265

PART No.	Gripper Pad Identification	A	B	C	D	E	F	*Wt.
3478	AR-1	4.604	1.500	2.200	1.273	0.850	1.700	3.5
3479	AR-3	5.313	2.000	2.200	1.627	1.100	2.200	5.5
3480	AR-4	6.218	2.500	2.400	2.050	1.350	2.700	8.9



Gripper Mounting Pads AR-1 thru AR-4 For Mounting Series 2 Grippers, 4 Places. See Data Sheet No. 9265

PART No.	Gripper Pad Identification	A	B	C	D	E	F	*Wt.
3481	AR-1	4.000	1.600	1.600	1.302	0.850	1.700	4.3
3482	AR-3	5.212	2.100	2.100	1.656	1.100	2.200	8.5
3483	AR-4	6.418	2.600	2.600	2.010	1.350	2.700	13.3



Gripper Mounting Pads AR-1 Thru AR-4 For Mounting Series 2 Grippers, 6 Places. See Tech. Data Sheet No. 9265.

PART No.	Gripper Pad Identification	A	B	C	D	E	F	G	*Wt.
3484	AR-1	4.400	2.200	1.155	2.000	1.300	0.850	1.700	8.0
3485	AR-3	5.512	2.756	1.386	2.400	1.656	1.100	2.200	14.0
3486	AR-4	6.936	4.400	1.800	3.118	2.000	1.350	2.700	27.0

APPLICATION

B•A•S•E® MULTIPLE STATION TURRETS improve productivity by allowing accumulative pick & place operations without changing end effectors or other related tooling. Time spent in major transfer motion is reduced for robots & other automation equipment.

SPECIFICATIONS

MATERIAL: High strength aluminum alloy. (See material option)

NOTE

Weight is in ounces for aluminum alloy turrets. For stainless steel turrets, multiply given weight by a factor of 3.

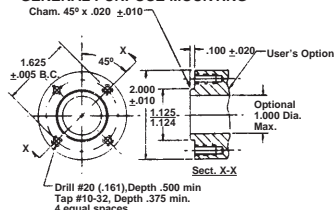
HOW TO ORDER STAINLESS STEEL TURRETS

Add the letter "S" as a prefix to the BASIC PART No. Add 50% to the BASE PRICE.

EXAMPLE = S 3460

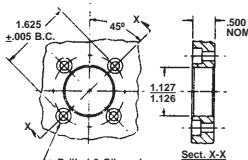
— BASIC PART NUMBER
S — Stainless Steel Prefix

GENERAL PURPOSE MOUNTING



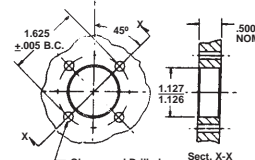
Drill #20 (161) Depth .500 min
Tap #10-32, Depth .375 min
4 equal spaces

TURRET MOUNTING DETAIL "Y"



Drilled & C'bored For #10 Internal Sock, Hd. Cap Screws 4 Places

TURRET MOUNTING DETAIL "Z"



Clearanced Drilled For #10 Screws 4 Places

HOW TO ORDER TURRETS WITH BLANK PADS

Add the letters "BP" as a suffix to the BASIC PART No. Subtract 10% from the BASE PRICE.

EXAMPLE = 3460-BP

— Blank Pad Suffix
— BASIC PART NO.

HOW TO ORDER METRIC TURRETS

Metric Turrets incorporate threads, clearance holes & counterbores to metric fastener specifications. See inside Front Cover for conversion. There is no added cost.

Add the letter "M" as a prefix to the BASIC PART No.

EXAMPLE = M 3460

— BASIC PART NO.
M — Metric Prefix.

