

FOUR FINGER B·A·S·E® GRIPPERS - SER. 2

BASIC FOUR FINGER UNITS - WITHOUT FINGERS

PART NO.	A	B	C	D	E	F	G	H	J	K	L	M	N	P	Q	R
73807	1.500	0.380	0.125	1.250	0.688	1.000	0.480	0.406	0.060	1.308	1.120	0.563	0.500	0.275	4	AL-2
73808	2.000	0.570	0.188	1.750	1.125	1.500	0.875	0.652	0.060	1.401	1.182	0.563	0.875	0.824	6	AL-3
73809	2.500	0.570	0.188	2.250	1.625	2.000	1.375	0.744	0.092	1.463	1.213	0.563	1.375	1.963	9	AL-4

"P" = Net Piston Area In Square Inches.
 "Q" = Weight Of Unit In Ounces.
 "R" = Mounting Flange Identification. See Gripper Tech Data Sheet No. 9265.

FOUR FINGER UNITS WITH BLANK FINGERS

PART NO.	A	B	C	D	E	F	G	H	J	K	L	M
4351	1.500	1.120	0.928	0.790	0.406	0.813	0.125	0.375	4	5	26	AL-2
4352	2.000	1.182	1.438	0.870	0.625	1.250	0.188	0.500	6	16	17	AL-3
4353	2.500	1.213	1.938	0.680	0.906	1.750	0.188	0.500	9	43	10	AL-4

"J" = Gripper Weight In Ounces.
 "K" = Pinch Force In Pounds At 8/10 "F" With An Inlet Pressure Of 80 PSI.
 "L" = Finger Rotation In Degrees.
 "M" = Mounting Flange Identification.
 See Gripper Tech Data Sheet No. 9265

GENERAL NOTES:

Four finger grippers provide a means for grasping square or rectangular parts. One pair of opposing fingers is wide for angular orientation of the part as the combination of four fingers close simultaneously to position the centroid. Angular orientation and centroid location is inherently good. A pocket in extremely closing fingers and shoulders on internally closing fingers provide depth control.

Dimensions are nominal in U.S. Customary units.

Metric Versions are dimensionally equivalent with clearance holes, counterbores, threads and fasteners to metric standards. See inside back cover for U.S.A. to Metric Thread conversion.

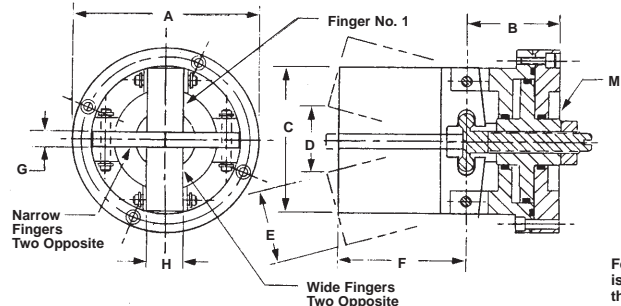
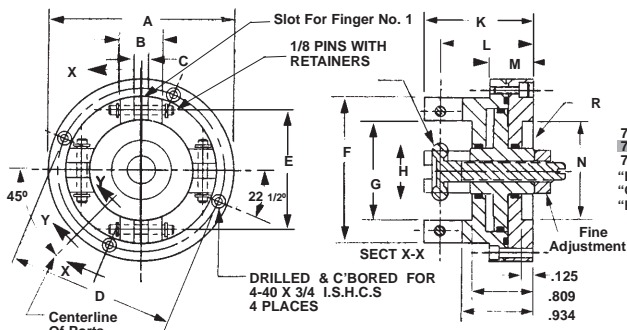
An air/oil mist unit is recommended for internal lubrication. Where such units are not practical, service kits including seals and factory approved lube are available. Please see "HOW TO ORDER SERVICE KITS".

Grippers may be used in low pressure hydraulic service and in vacuum ambients.

Fingers may be fabricated from any machinable material with physical properties of 20,000 psi or higher.

Please refer to the view & tabulated data on BASIC UNITS WITHOUT FINGERS for dimensions not shown. See TECH DATA SHEET 9265 for added information on grippers and request copies of TL112 & TL113 for general information on non-servo, pneumatic robots and pneumatic grippers.

Inquiries regarding modifications to standard grippers are always welcome.



SPECIFICATIONS,

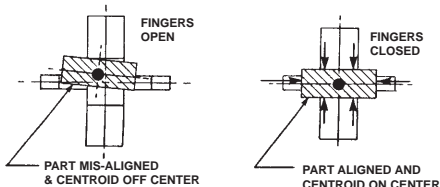
SERVICE: PLANT AIR
 M.O.P., 150 PSI (10 BAR)
 M.O.T., +250° F. (120° C.)

MATERIALS:

PISTON, STEM & PINS, STAINLESS STEEL
 HOUSING & FINGERS, ALUMINUM ALLOY
 SEALS, BUNA "N" O RINGS
 FASTENERS, ALLOY STEEL I.S.H.C.S.

SEE BELOW ON HOW TO ORDER OPTIONAL MATERIALS.

OPERATION



ONE PAIR OF OPPOSING FINGERS IS WIDE FOR ANGULAR ORIENTATION OF A PART AS THE COMBINATION OF FOUR FINGERS CLOSE SIMULTANEOUSLY TO POSITION THE CENTROID.

HOW TO ORDER ALL STAINLESS STEEL GRIPPERS

Add the letters "SS" as a prefix to the BASIC PART NO.
 Add 50% to the BASE PRICE.

EXAMPLE= SS 4351

_____ BASIC PART NO.
 All Stainless steel prefix

HOW TO ORDER METRIC GRIPPERS

Add the letter "M" as a prefix to the BASIC PART NO.
 There is no added cost

EXAMPLE= S 4351

_____ BASIC PART NO.
 Metric Prefix

HOW TO ORDER GRIPPERS WITH STAINLESS FINGERS

Add the letter "S" as a suffix to the BASIC PART NO.
 Add 33% to the BASE PRICE.

EXAMPLE= 4351-S

_____ Stainless steel fingers
 _____ BASIC PART NO.

HOW TO ORDER GRIPPERS WITH TOOL STEEL FINGERS

Add the letter "TS" as a suffix to the BASIC PART NO.
 Add 33% to the BASE PRICE.

EXAMPLE= 4351-TS

_____ Tool steel fingers
 _____ BASIC PART NO.

HOW TO ORDER SPARE ALUMINUM FINGERS

Add the suffix "-SFA" to the BASIC PART NO.
 Price is 25% of the BASE PRICE.

EXAMPLE= 4351-SFA

_____ Aluminum alloy finger set
 _____ BASIC PART NO.

HOW TO ORDER SPARE STAINLESS FINGERS

Add the suffix "-SFS" to the BASIC PART NO.
 Price is 33% of the BASE PRICE

EXAMPLE= 4351-SFS

_____ Stainless steel finger set
 _____ BASIC PART NO.

HOW TO ORDER SPARE TOOL STEEL FINGERS

Add the suffix "-SFTS" to the BASIC PART NO.
 Price is 33% of the BASE PRICE.

EXAMPLE= 4351-SFTS

_____ Tool Steel Finger Set
 _____ BASIC PART NO.

HOW TO ORDER BUNA "N" SERVICE KITS

Add the suffix "-SK" to the BASIC PART NO.

EXAMPLE= 4351-SK

_____ Buna "N" Service Kit
 _____ BASIC PART NO.

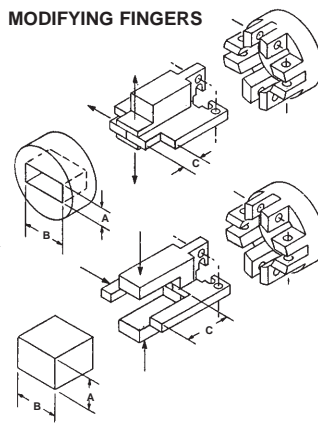
HOW TO ORDER VITON SERVICE KITS

Add the suffix "-VSK" to the BASIC PART NO.

EXAMPLE= 4351-VSK

_____ VITON Service Kit
 _____ BASIC PART NO.

MODIFYING FINGERS



PART NO.	A		B		C	
	Max.	Min.	Max.	Min.	Max.	Min.
4351	0.800	0.200	0.750	0.450	0.450	0.100
4352	1.200	0.350	1.200	0.600	0.750	0.100
4353	1.600	0.350	1.600	0.600	1.100	0.100

HOW TO ORDER GRIPPERS WITH VITON SEALS

Add the suffix "-V" to the BASIC PART NO.
 Add 10% to the BASE PRICE.

EXAMPLE= 4351-V

_____ Indicates Viton Seals
 _____ BASIC PART NO.

