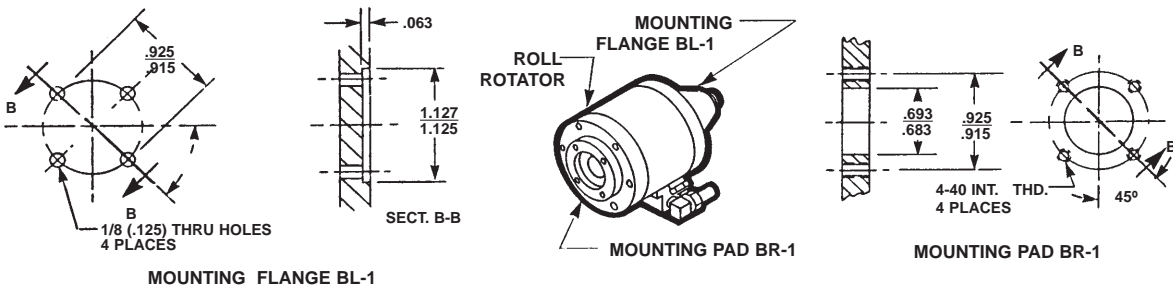


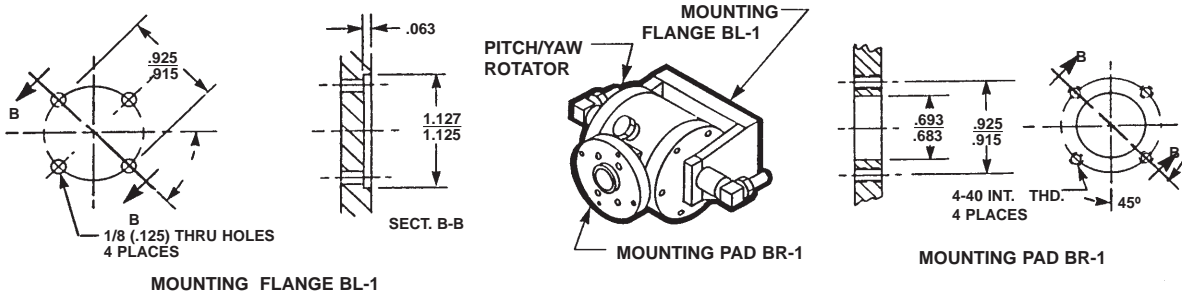
TECH DATA - ROTATORS - SER. 2

ROLL ROTATOR MOUNTING



Components with Mounting Flange BL-1 attach directly to Mounting Pad BR-1

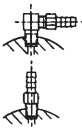
ROLL ROTATOR MOUNTING



Components with Mounting Flange BL-1 attach directly to Mounting Pad BR-1

FITTINGS

TWO PIECE MONO - TAPER™ ELBOWS ARE SUPPLIED. MONO - TAPER™ FITTINGS ARE RUGGED, MINIATURE FITTINGS BASED ON S.A.E. 1/14 -28 LT STANDARDS WHERE ALL THE TAPER IS INCORPORATED INTO THE FITTING. PORTS ARE 1/4-28 INTERNAL STRAIGHT THREADS.



Two piece elbows for 1/8" I.D. plastic tubing are supplied unless one of the options below is specified.



To dress control lines radially outward, disassemble elbows & install only the barbed section.



An optional elbow for 1/16" I.D. plastic tubing. If required, Add - 1/16 As a suffix to the BASIC PART NO. EXAMPLE: 3045-1/16 There is no added cost.



To dress 1/16" I.D. plastic tubing radially outward, disassemble two piece elbow & install only the barbed section.



10-32 straight threaded optional ports. If required, add -1032 as a suffix to the BASIC PART NO. EXAMPLE: 3045-1032 There is no added cost & fittings are not supplied.

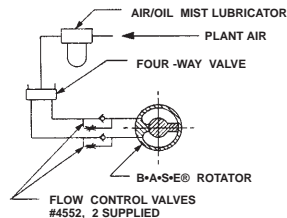
CONTROL

INSTALL A STANDARD AIR/OIL MIST LUBRICATOR UPSTREAM OF ALL COMPONENTS. MOUNT AS HIGH AS POSSIBLE FOR BETTER OIL MIGRATION.

INSTALL A STANDARD FOUR-WAY AIR VALVE.

INSTALL TWO 4552 CONTROL VALVES IN THE METER - OUT MODE FOR SPEED CONTROL.

MAINTAIN INLET PRESSURE ABOVE 80 PSI FOR FULL TORQUE.



COMPONENT SELECTION

