

B•A•S•E® INTERMEDIATE STOP CYLINDERS - SER. 2

APPLICATION

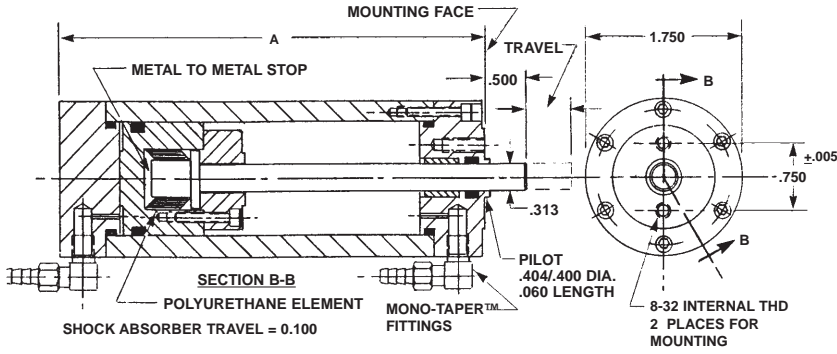
THESE UNITS ARE USED AS SIMPLE CONTROL DEVICES TO PROVIDE TWO INTERMEDIATE STOP POSITIONS ON "Y" AND "Z" AXIS TRANSPORTERS.

DESCRIPTION

INTERMEDIATE STOP CYLINDERS ARE PART OF AN INTEGRATED PRODUCT LINE OF "BASIC AUTOMATION SYSTEMS ELEMENTS" FOR A "START SIMPLE APPROACH" TO NON-SERVO ROBOTS.

OPERATION IS POSITIVE IN BOTH EXTENDED AND RETRACTED POSITIONS USING PLANT AIR WITH ON/OFF PROGRAMMING.

A POLYURETHANE ELEMENT IS INCORPORATED WITHIN THE PISTON HEAD TO ABSORB SHOCK AND TO PROVIDE METAL TO METAL CONTACT FOR PRECISE POSITION CONTROL.

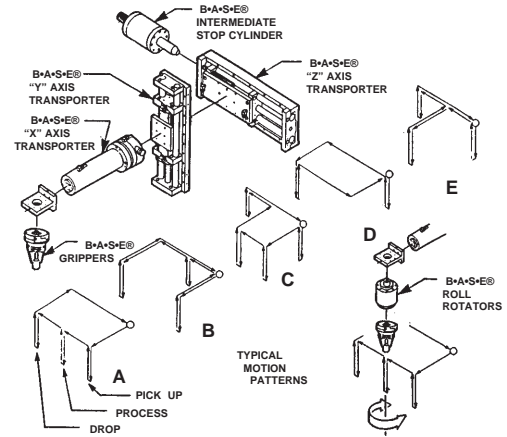


PART NO.	DIM. "A"	TRAVEL (inches)	USE WITH	USE WITH
			"Y" AXIS TRANSPORTER NO.	"Z" AXIS TRANSPORTER NO.
4822-10	3.800	1 (10/10)	S4839-20	S4840-20
4822-20	4.800	2 (20/10)	S4839-40	S4840-40
4822-30	5.800	3 (30/10)	S4839-60	S4840-60
4822-40	6.800	4 (40-40)	S4839-80	S4840-80
4822-50	7.800	5 (50/10)	S4839-100	S4840-100
4822-60	8.800	6 (60/10)	S4839-120	S4840-120

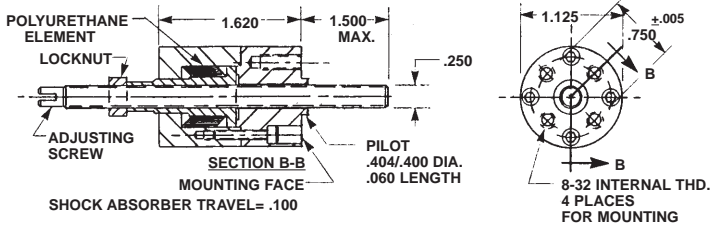
SPECIFICATIONS

MATERIALS: ALUMINUM ALLOY AND STAINLESS STEEL
 SEALING ELEMENTS: STANDARD "O" RINGS
 FLUID MEDIUM: PNEUMATICS (SHOP AIR)
 MAXIMUM OPERATING PRESSURE: 150 PSI
 MAXIMUM OPERATING TEMPERATURE: 150°F.
 INTERNAL LUBRICATION: LO-PRO® LUBE
 TRAVEL RANGE: SEE TABLE
 FORCE EXTENDED: 96# @80 PSI
 REPEATABILITY: ± .002 INCHES

COMPONENT SELECTION



B•A•S•E® ADJUSTABLE SHOCK ABSORBER - SER. 2



PART NO. 4823-10

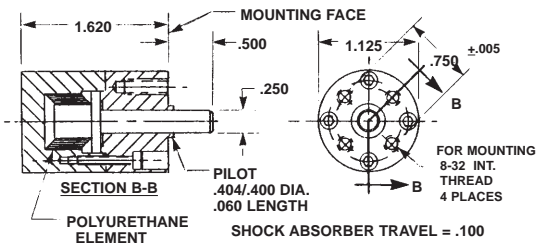
SPECIFICATIONS

BODY & COVER, ALUMINUM ALLOY
 SPOOL & ADJUSTING SCREW, STAINLESS STEEL

APPLICATION

THESE UNITS ARE USED ON "Y" AND "Z" AXIS TRANSPORTERS FOR ADJUSTABLE TRAVEL STOPS. A POLYURETHANE ELEMENT IS INCORPORATED WITHIN THE SPOOL SECTION TO ABSORB SHOCK. THE SPOOL TRAVELS 0.100 INCHES WITH METAL TO METAL CONTACT AND IS THREADED INTERNALLY FOR AN ADJUSTING SCREW. RANGE OF THREADED ADJUSTMENT IS FROM ZERO TO 1.500 INCHES.

B•A•S•E® FIXED SHOCK ABSORBER - SER. 2



PART NO. 4824

SPECIFICATIONS

BODY & COVER, ALUMINUM ALLOY
 SPOOL, STAINLESS STEEL

APPLICATION

THESE UNITS ARE USED WITH "Y" AND "Z" AXIS TRANSPORTERS WITH TWO ADJUSTABLE STOP POSITIONS. A POLYURETHANE ELEMENT IS BUILT INTO THE SPOOL SECTION. THE SPOOL SECTION PROVIDES METAL TO METAL CONTACT FOR PRECISE POSITIONING OF THE MOTION CARRIAGE.