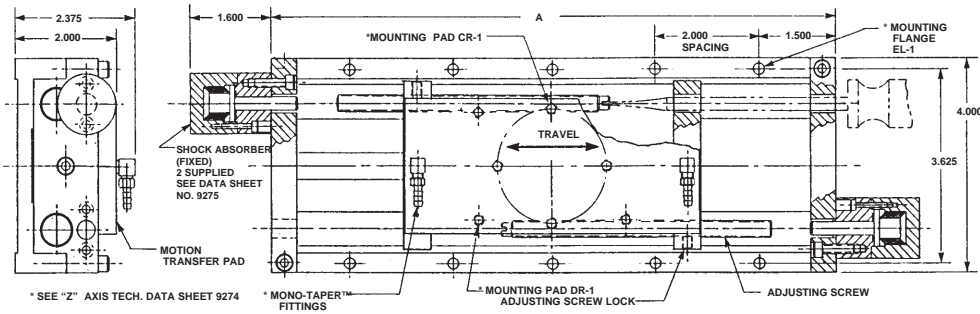


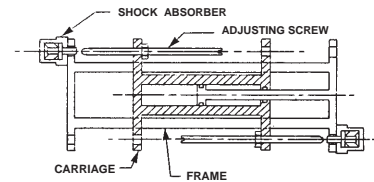
"Z" AXIS B•A•S•E® TRANSPORTERS - SER. 2

TWO ADJUSTABLE STOP CONFIGURATION



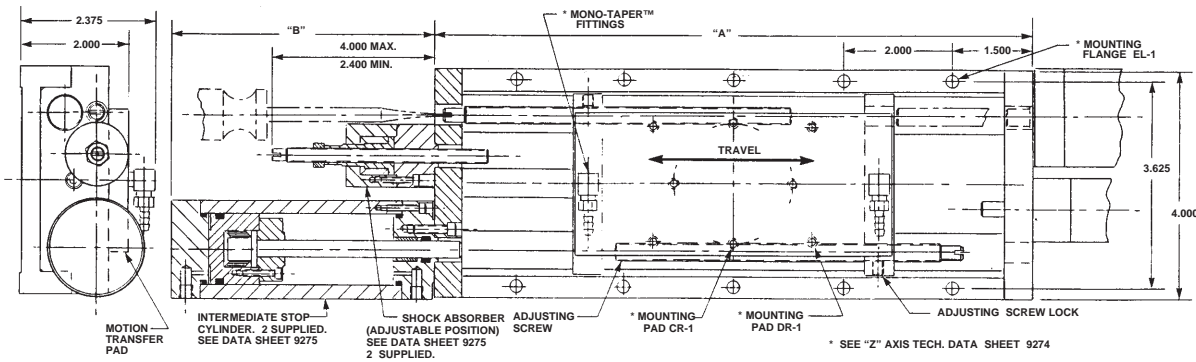
MODEL NO.	MAX. TRAVEL (inches)	NOM. DIM. "A" (inches)	UNIT WEIGHT (lbs)
S-2820-20	2.000	7.000	5.0
S-2820-40	4.000	11.000	7.0
S-2820-60	6.000	15.000	8.5
S-2820-80	8.000	19.000	10.0
S-2820-100	10.000	23.000	12.0
S-2820-120	12.000	27.000	14.0

SCHEMATIC



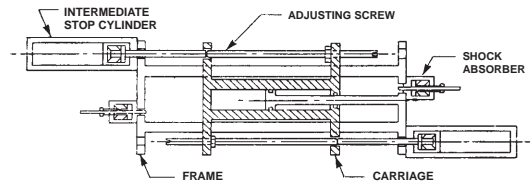
TWO ADJUSTABLE STOP POSITIONS

FOUR ADJUSTABLE STOP CONFIGURATION



MODEL NO.	MAX. TRAVEL (inches)	NOM. DIM. "A" (inches)	NOM. DIM. "B" (inches)	UNIT WEIGHT (lbs)
S-4840-20	2.000	7.000	3.800	6.0
S-4840-40	4.000	11.000	4.800	8.0
S-4840-60	6.000	15.000	5.800	9.5
S-4840-80	8.000	19.000	6.800	11.0
S-4840-100	10.000	23.000	7.800	13.0
S-4840-120	12.000	27.000	8.800	15.0

SCHEMATIC



FOUR ADJUSTABLE STOP POSITIONS

DESCRIPTION

B•A•S•E® "Z" AXIS TRANSPORTERS are part of an integrated product line of BASIC AUTOMATION SYSTEMS ELEMENTS for a "Start Simple Approach" to practical non-servo robots. Essentially, a "Z" AXIS TRANSPORTER is a precision slide table operated by plant air for transferring small loads through short distances along a horizontal axis.

The "Z" AXIS nomenclature is assigned in order to differentiate between this product and other transporter units in the B•A•S•E® ROBOT SYSTEM, however "Z" AXIS TRANSPORTERS will operate in any position.

Mounting may be to an existing device or to fixed brackets for single axis translating motion. Numerous load handling devices may be attached directly to the "motion transfer pad" for single axis transfer. "Z" AXIS TRANSPORTERS may also be combined with "Y" and "X" AXIS TRANSPORTERS for three axis motion. Further, B•A•S•E® ROTATORS and GRIPPERS may be added for full six axis motion in robot applications.

Special features include an improved guide for extended service life and standardized mounting for interchangeability with other B•A•S•E® ROBOTIC COMPONENTS. Travel stops are provided for position control.

Operation is positive with pressure in both plus and minus directions. Most applications operate directly on plant air at 80 PSI using regular four way, solenoid operated air valves. A simple cam timer may be used for elementary control, a programmable controller for intermediate control and a computer may be used when these units are incorporated into a sophisticated operating system. Mass of moving parts have been kept to a minimum for rapid cycling. Cycle rate is influenced by factors related to control. One motion per second is a practical objective.

APPLICATION

These units may be used as simple motion devices or combined with other elements in the B•A•S•E® ROBOTIC SYSTEM for combinations of motions as required. A full six-axis robot with gripper may be structured with appropriate combinations of B•A•S•E® ROBOTIC COMPONENTS.

SPECIFICATIONS

MATERIALS: ALUMINUM ALLOY, STAINLESS STEEL AND BRONZE
 SEALING ELEMENTS: STANDARD "O" RINGS
 FLUID MEDIUM: PNEUMATICS (SHOP AIR)
 MAXIMUM OPERATING PRESSURE: 150 PSI
 MAXIMUM OPERATING TEMPERATURE: 150° F.
 INTERNAL LUBRICANT: LO-PRO® LUBE
 EXTERNAL FINISH: STRIA-TEX®
 TRAVEL RANGE: SEE TABLES
 FORCE IN + "Z" DIRECTION: 70 LB. @ 80 PSI
 FORCE IN - "Z" DIRECTION: 55 LB. @ 80 PSI
 RATED PAYLOAD: 20 LB.
 RATED OVERHANGING MOMENT: 80 IN. LB.
 REPEATABILITY: PLUS OR MINUS .002 INCHES
 REPROGRAMMABLE BY RESETTING TRAVEL STOPS