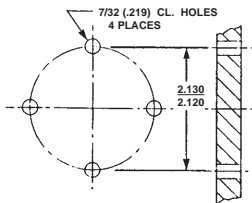


# TECH DATA - "Y" AXIS TRANSPORTERS - SER. 2

## MOUNTING

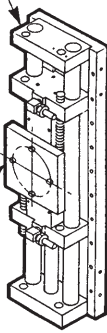


MOUNTING FLANGE CL-1

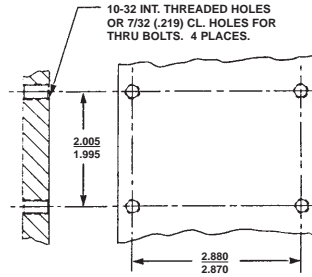
Components with Mounting Flange CL-1 attach directly to Mounting Pad CR-1

## "Y" AXIS TRANSPORTER

## MOUNTING PAD CR-1



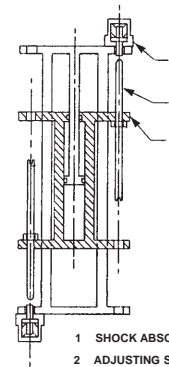
## MOUNTING FLANGE DL-1



MOUNTING PAD DR-1

Components with Mounting Flange DL-1 attach directly to Mounting Pad DR-1

## ADJUSTMENTS

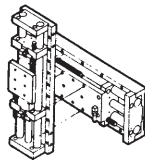


- 1 SHOCK ABSORBER
- 2 ADJUSTING SCREWS
- 3 MOTION CARRIAGES

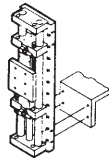
ADJUSTING SCREW POSITIONS THE MOTION CARRIAGE ANYWHERE FROM MID POINT OF TRAVEL TO THE END OF TRAVEL.

TWO ADJUSTABLE STOP POSITIONS

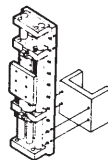
## SUGGESTIONS



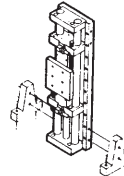
TO "Z" AXIS TRANSPORTER



TO EXISTING STRUCTURE

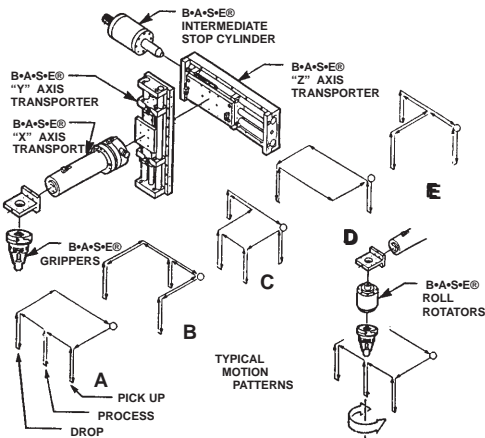


WITH 2749 BRACKETS



WITH 2748 BRACKETS

## COMPONENT SELECTION

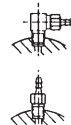


## FITTINGS

TWO PIECE MONO-TAPER™ ELBOWS ARE SUPPLIED. MONO-TAPER™ FITTINGS ARE RUGGED, MINIATURE FITTINGS BASED ON S.A.E. 1/14-28 LT. STANDARDS WHERE ALL THE TAPER IS INCORPORATED INTO THE FITTINGS. PORTS ARE 1/4-28 INTERNAL STRAIGHT THREADS.



Two piece elbows for 1/8" I.D. plastic tubing are supplied unless one of the options below is specified.

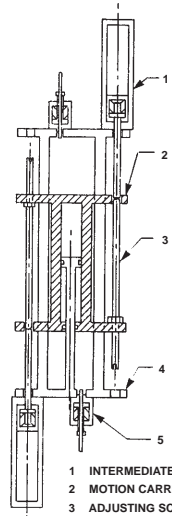


An optional elbow for 1/16" I.D. plastic tubing. If required, Add -1/16 as a suffix to the BASIC PART NO. EXAMPLE: S2750-20-1/16 There is no added cost.



10-32 straight threaded optional ports. If required, add -1032 As a suffix to the BASIC PART NO. EXAMPLE: S2750-20-1032 There is no added cost & fittings are not supplied.

## ADJUSTMENTS

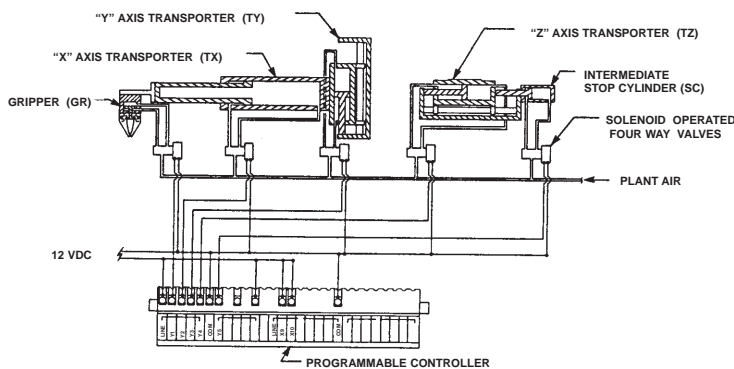


- 1 INTERMEDIATE STOP CYLINDER
- 2 MOTION CARRIAGE
- 3 ADJUSTING SCREW
- 4 FRAME
- 5 ADJUSTABLE END STOP

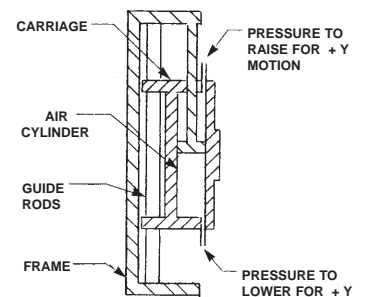
CARRIAGE TRAVELS TO ADJUSTABLE END STOPS WITH INTERMEDIATE STOP CYLS. RETRACTED. WITH INTERMEDIATE STOP CYLS. EXTENDED, THE CARRIAGE TRAVELS TO POSITIONS SET BY THE ADJUSTING SCREW. TRAVEL RANGE IS FROM MID-POINT TO END OF TRAVEL.

FOUR ADJUSTABLE STOP POSITIONS

## TYPICAL SYSTEM SCHEMATIC



## CONTROL



USE STANDARD 4 WAY VALVES FOR CONTROL