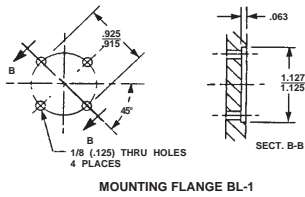
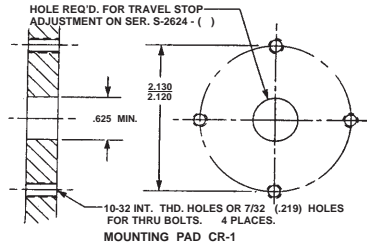
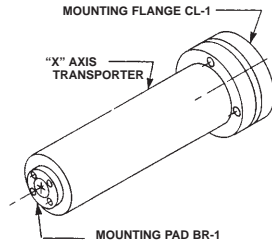


TECH DATA - "X" AXIS TRANSPORTERS - SER. 2

MOUNTING

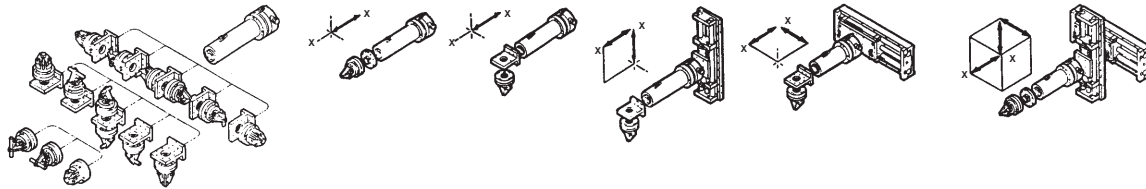


COMPONENTS WITH MOUNTING FLANGE BL-1 ATTACH DIRECTLY TO MOUNTING PAD BR-1

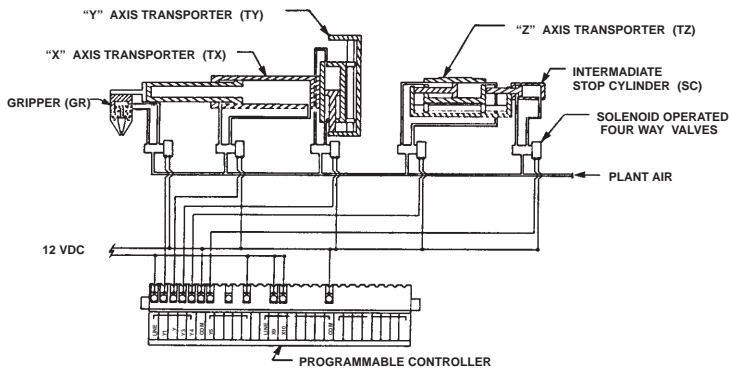


COMPONENTS WITH MOUNTING FLANGE CL-1 ATTACH DIRECTLY TO MOUNTING PAD CR-1

COMPONENT SELECTION

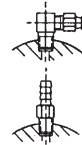


TYPICAL SYSTEM SCHEMATIC

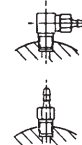


FITTINGS

TWO PIECE MONO - TAPER™ ELBOWS ARE SUPPLIED. MONO - TAPER™ FITTINGS ARE RUGGED, MINIATURE FITTINGS BASED ON S.A.E. 1/14-28 LT STANDARDS WHERE ALL THE TAPER IS INCORPORATED INTO THE FITTING. PORTS ARE 1/4-28 INTERNAL STRAIGHT THREADS.

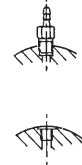


Two piece elbows for 1/8" I.D. plastic tubing are supplied unless one of the options below is specified. Fittings are on Section S-S



To dress control lines radially outward, disassemble elbows & install only the barbed section.

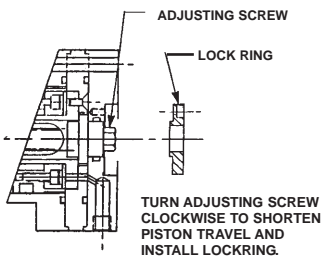
An optional elbow for 1/16" I.D. plastic tubing. If required, add - 1/16 as a suffix to the BASIC PART NO. EXAMPLE: S2626-()-1/16 There is no added cost.



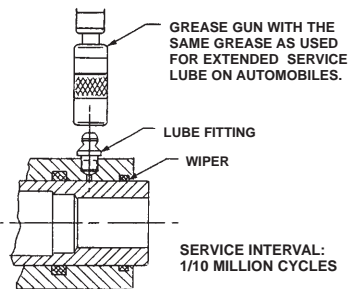
To dress 1/16" I.D. plastic tubing radially outward, disassemble two piece elbow & install only the barbed section.

10-32 straight threaded optional ports if required, add -1032 as a suffix to the BASIC PART NO. EXAMPLE: S2626-()-1032 There is no added cost & fittings are not supplied.

ADJUSTMENTS



SERVICING



CONTROL

