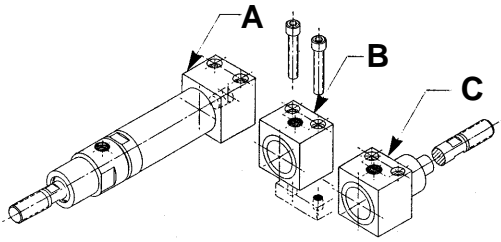


Automation Basic Cylinders

A•B•C® THRU BOLT, AFT BLOCK MOUNTED

CONFIGURATIONS:



MOUNTING STYLE:

THRU BOLT, AFT BLOCK MOUNTED CYLINDERS are offered for installations where mounting is accessible only in the region of the aft block. Bolts go thru clearance holes in the aft block into threaded holes in a structure. Cylinders operate properly in any position.

SPECIFICATIONS:

MATERIALS: Aluminum Alloy, Bronze and Steel.
SERVICE: Pneumatic and Hydraulic.
OPERATING PRESSURE RANGE: Vacuum to 300 P.S.I.
OPERATING TEMPERATURE RANGE: -20°F to 250°F.
SEALING ELEMENTS: Standard "O" Rings.

GENERAL NOTES:

All dimensions are nominal in U.S. CUSTOMARY units. Please consult the Factory for METRIC VERSIONS. A•B•C® is the registered trademark for MACK CORPORATION HEAVY DUTY AIR CYLINDERS. Developed and produced in the U.S.A. Please refer to page A20 for instructions in performing:
 Angular Port Adjustment.
 Complete Cylinder Servicing.
 Rod Seal & Bushing Service without disturbing the cylinder mounting or supply lines.

ORDERING INFORMATION:

HOW TO ORDER BASIC CYLINDERS
 A BASIC PART NUMBER consists of four digits followed by a dash number to indicate piston travel in increments of one inch.

EXAMPLE: 5000 -12
 — BASIC PART NUMBER
 — TRAVEL IN INCHES
 — FOUR DIGITS FROM THE TABLE

HOW TO ORDER CYLINDERS WITH INTERNAL ROD THREADS
 Add the suffix -IT to the BASIC PART NUMBER. THERE IS NO ADDED COST.

EXAMPLE: 5000 -12 -IT
 — INTERNAL THREADS
 — BASIC PART NUMBER

HOW TO ORDER CYLINDERS WITH STAINLESS STEEL PISTON RODS

Add the suffix -SS to the BASIC PART NUMBER
 Add 25% to the BASE PRICE.

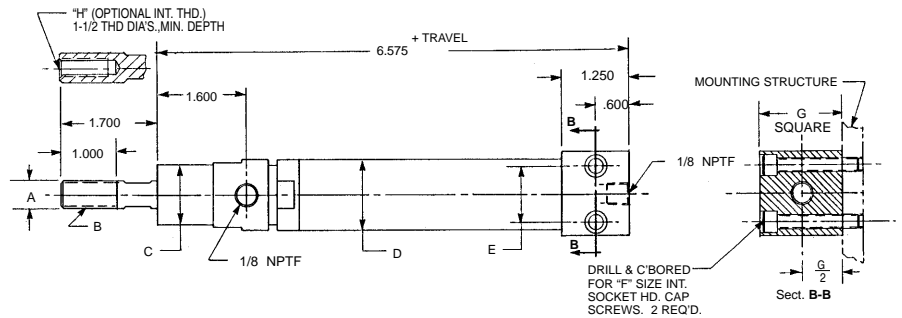
EXAMPLE: 5000 -12 -SS
 — STAINLESS STEEL ROD OPTION
 — BASIC PART NUMBER

HOW TO ORDER SERVICE KITS

Add the suffix -SK to the FOUR DIGIT NUMBER.

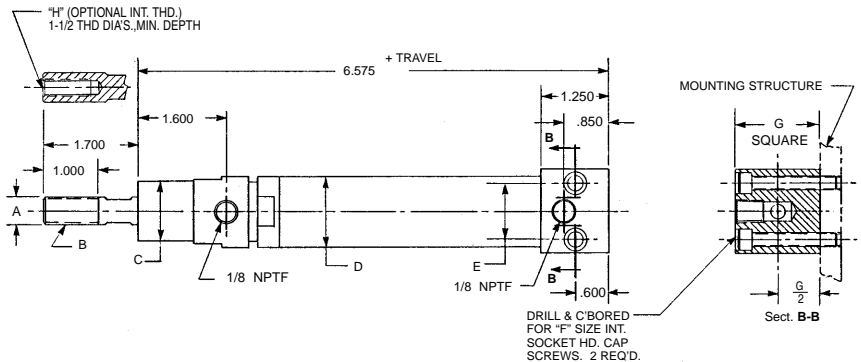
EXAMPLE: 5000 -SK
 — INDICATES SERVICE KIT
 — FOUR DIGITS FROM THE TABLE

CONFIGURATION A, Double Acting-Single Ended-Side & End Ports



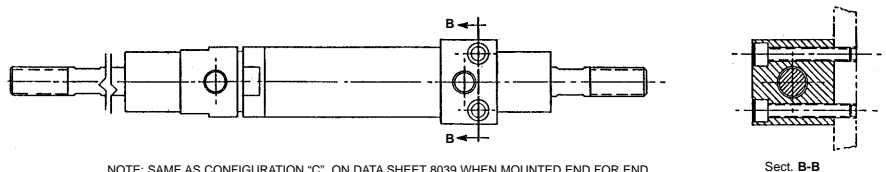
PART NO. & TRAVEL	CYLINDER BORE	A ROD DIA.	B EXTERNAL ROD THD.	C NOSE DIA.	D BODY DIA.	E BOLT CENTER	F MOUNTING SCREW SIZE	G SQUARE	H INTERNAL ROD THD.
5084 (-)	0.656	0.375	3/8 -24	0.875	0.875	0.813	10-32 x 1-1/4	1.250	1/4 -28
5085 (-)	0.938	0.500	1/2 -20	1.063	1.250	1.000	1/4 -28 x 1-1/2	1.500	3/8 -24
5086 (-)	1.188	0.625	5/8 -18	1.313	1.500	1.250	5/16 -24 x 2	2.000	7/16 -20
5087 (-)	1.500	0.750	3/4 -16	1.625	1.875	1.438	3/8 -24x2 -1/4	2.250	1/2 -20

CONFIGURATION B, Double Acting-Single Ended- Both Side Ports



PART NO. & TRAVEL	CYLINDER BORE	A ROD DIA.	B EXTERNAL ROD THD.	C NOSE DIA.	D BODY DIA.	E BOLT CENTER	F MOUNTING SCREW SIZE	G SQUARE	H INTERNAL ROD THD.
5088 (-)	0.656	0.375	3/8 -24	0.875	0.875	0.813	10-32 x 1-1/4	1.250	1/4 -28
5089 (-)	0.938	0.500	1/2 -20	1.063	1.250	1.000	1/4 -28 x 1-1/2	1.500	3/8 -24
5090 (-)	1.188	0.625	5/8 -18	1.313	1.500	1.250	5/16 -24 x 2	2.000	7/16 -20
5091 (-)	1.500	0.750	3/4 -16	1.625	1.875	1.438	3/8 -24x2 -1/4	2.250	1/2 -20

CONFIGURATION C, Double Acting-Double Ended- Both Side Ports



NOTE: SAME AS CONFIGURATION "C" ON DATA SHEET 8039 WHEN MOUNTED END FOR END. PLEASE REFER TO PART NUMBERS 5008 (-), 5009 (-), 5010 (-) & 5011 (-).



DATA SHEET 8046
 © 2006 MACK CORPORATION