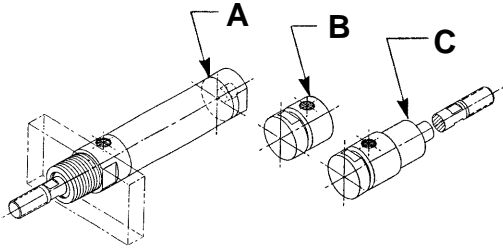


Automation Basic Cylinders

A•B•C® THREADED, FRONT NOSE MOUNTED

CONFIGURATIONS:



MOUNTING STYLE:

THREADED, FRONT NOSE MOUNTED CYLINDERS provide three convenient mounting possibilities;

- Attaching the cylinder directly into a threaded hole in the mounting structure.
- Clamping a cylinder in a through hole in the mounting structure using a nut.
- Clamping a cylinder into an optional bracket. (See the ACCESSORIES SHEET)

SPECIFICATIONS:

MATERIALS: Aluminum Alloy, Bronze and Steel.
SERVICE: Pneumatic and Hydraulic.
OPERATING PRESSURE RANGE: Vacuum to 300 P.S.I.
OPERATING TEMPERATURE RANGE: -20°F to 250°F.
SEALING ELEMENTS: Standard "O" Rings.

GENERAL NOTES:

All dimensions are nominal in U.S. CUSTOMARY units. Please consult the Factory for METRIC VERSIONS. A•B•C® is the registered trademark for MACK CORPORATION HEAVY DUTY AIR CYLINDERS. Developed and produced in the U.S.A. Please refer to page A20 for instructions in performing:
 Angular Port Adjustment.
 Complete Cylinder Servicing.
 Rod Seal & Bushing Service without disturbing the cylinder mounting or supply lines.

ORDERING INFORMATION:

HOW TO ORDER BASIC CYLINDERS
 A BASIC PART NUMBER consists of four digits followed by a dash number to indicate piston travel in increments of one inch.

EXAMPLE: 5000-12
 BASIC PART NUMBER
 TRAVEL IN INCHES
 FOUR DIGITS FROM THE TABLE

HOW TO ORDER CYLINDERS WITH INTERNAL ROD THREADS

Add the suffix -IT to the BASIC PART NUMBER. THERE IS NO ADDED COST.

EXAMPLE: 5000-12-IT
 INTERNAL THREADS
 BASIC PART NUMBER

HOW TO ORDER CYLINDERS WITH STAINLESS STEEL PISTON RODS

Add the suffix -SS to the BASIC PART NUMBER. Add 25% to the BASE PRICE.

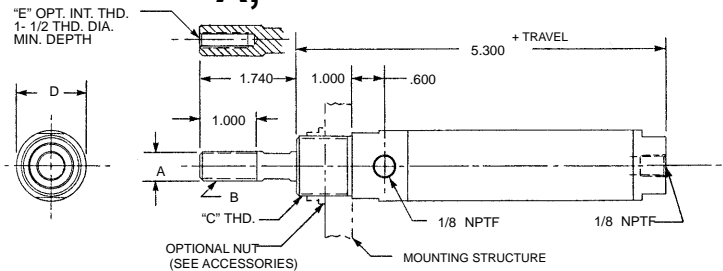
EXAMPLE: 5000-12-SS
 STAINLESS STEEL ROD OPTION
 BASIC PART NUMBER

HOW TO ORDER SERVICE KITS

Add the suffix -SK to the FOUR DIGIT NUMBER.

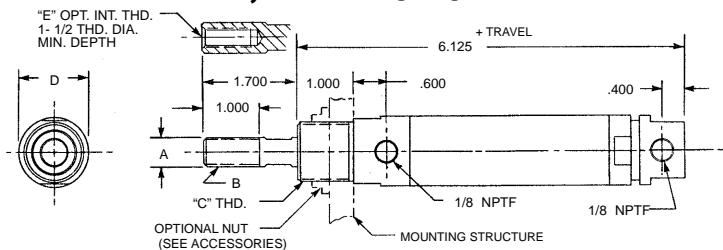
EXAMPLE: 5000-SK
 INDICATES SERVICE KIT
 FOUR DIGITS FROM THE TABLE

CONFIGURATION A, Double Acting-Single Ended-Side & End Ports



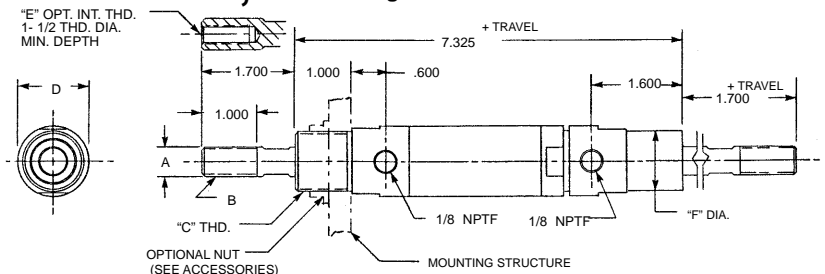
PART NO. & TRAVEL	CYLINDER BORE	A ROD O.D.	B EXTERNAL ROD THD.	C NOSE THD.	D BODY DIA.	E INTERNAL ROD THD. (OPTION)
5036 (-)	0.656	0.375	3/8-24	7/8-14	0.875	1/4-28
5037 (-)	0.938	0.500	1/2-20	1-1/16-12	1.250	3/8-24
5038 (-)	1.188	0.625	5/8-18	1-5/16-12	1.500	7/16-20
5039 (-)	1.500	0.750	3/4-16	1-5/8-12	1.875	1/2-20

CONFIGURATION B, Double Acting-Single Ended- Both Side Ports



PART NO. & TRAVEL	CYLINDER BORE	A ROD O.D.	B EXTERNAL ROD THD.	C NOSE THD.	D BODY DIA.	E INTERNAL ROD THD. (OPTION)
5040 (-)	0.656	0.375	3/8-24	7/8-14	0.875	1/4-28
5041 (-)	0.938	0.500	1/2-20	1-1/16-12	1.250	3/8-24
5042 (-)	1.188	0.625	5/8-18	1-5/16-12	1.500	7/16-20
5043 (-)	1.500	0.750	3/4-16	1-5/8-12	1.875	1/2-20

CONFIGURATION C, Double Acting-Double Ended- Both Side Ports



PART NO. & TRAVEL	CYLINDER BORE	A ROD O.D.	B EXTERNAL ROD THD.	C NOSE THD.	D BODY DIA.	E INTERNAL ROD THD. (OPTION)	F NOSE O.D.
5044 (-)	0.656	0.375	3/8-24	7/8-14	0.875	1/4-28	0.750
5045 (-)	0.938	0.500	1/2-20	1-1/16-12	1.250	3/8-24	1.063
5046 (-)	1.188	0.625	5/8-18	1-5/16-12	1.500	7/16-20	1.313
5047 (-)	1.500	0.750	3/4-16	1-5/8-12	1.875	1/2-20	1.625



DATA SHEET 8042
 © 2006 MACK CORPORATION