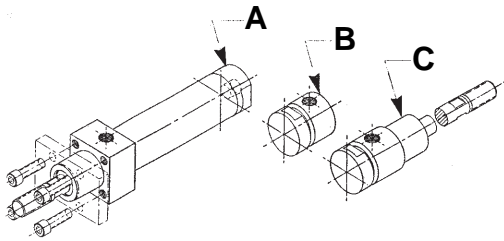


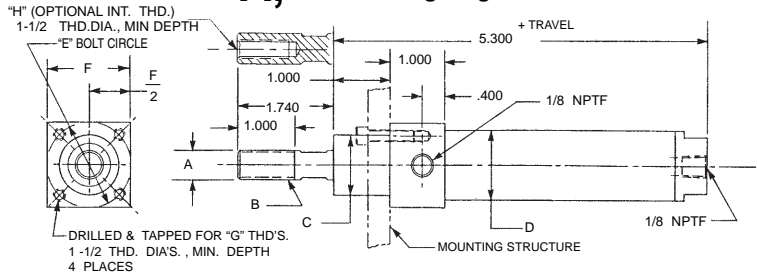
Automation Basic Cylinders

A•B•C® FRONT FACE MOUNTED CYLINDERS

CONFIGURATIONS:



CONFIGURATION A, Double Acting-Single Ended-Side & End Ports



PART NO. & TRAVEL	CYLINDER BORE	A ROD O.D.	B EXTERNAL ROD THD.	C NOSE DIA.	D BODY DIA.	E BOLT CIRCLE	F SQUARE	G MOUNTING SCREW SIZE	H INTERNAL ROD THD. (OPTION)
5024 (-)	0.656	0.375	3/8-24	0.875	0.875	1.250	1.250	10-32	1/4-28
5025 (-)	0.938	0.500	1/2-20	1.063	1.250	1.500	1.500	10-32	3/8-24
5026 (-)	1.188	0.625	5/8-18	1.313	1.500	2.063	2.000	1/4-28	7/16-20
5027 (-)	1.500	0.750	3/4-16	1.625	1.875	2.250	2.250	5/16-24	1/2-20

MOUNTING STYLE:

FRONT FACE MOUNTED CYLINDERS provide a convenient in-line mounting where bolts come through clearance holes in a structure into threaded holes in the front face of a cylinder. A pilot assures good concentricity control and cylinders operate properly in any position.

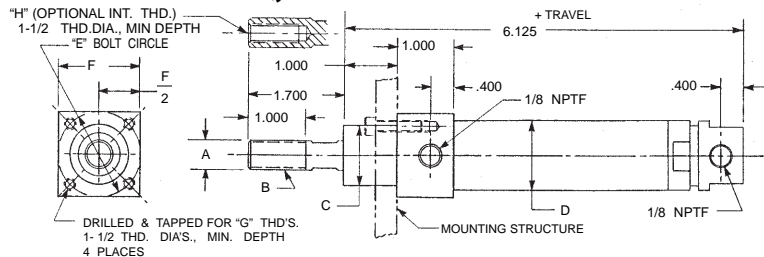
SPECIFICATIONS:

MATERIALS: Aluminum Alloy, Bronze and Steel.
SERVICE: Pneumatic and Hydraulic.
OPERATING PRESSURE RANGE: Vacuum to 300 P.S.I.
OPERATING TEMPERATURE RANGE: -20°F to 250°F.
SEALING ELEMENTS: Standard "O" Rings.

GENERAL NOTES:

All dimensions are nominal in U.S. CUSTOMARY units. Please consult the Factory for METRIC VERSIONS. A•B•C® is the registered trademark for MACK CORPORATION HEAVY DUTY AIR CYLINDERS. Developed and produced in the U.S.A. Please refer to page A20 for instructions in performing:
 Angular Port Adjustment.
 Complete Cylinder Servicing.
 Rod Seal & Bushing Service without disturbing the cylinder mounting or supply lines.

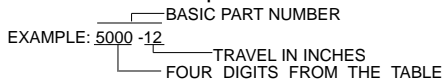
CONFIGURATION B, Double Acting-Single Ended- Both Side Ports



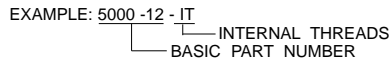
PART NO. & TRAVEL	CYLINDER BORE	A ROD O.D.	B EXTERNAL ROD THD.	C NOSE DIA.	D BODY DIA.	E BOLT CIRCLE	F SQUARE	G MOUNTING SCREW SIZE	H INTERNAL ROD THD. (OPTION)
5028 (-)	0.656	0.375	3/8-24	0.875	0.875	1.250	1.250	10-32	1/4-28
5029 (-)	0.938	0.500	1/2-20	1.063	1.250	1.500	1.500	10-32	3/8-24
5030 (-)	1.188	0.625	5/8-18	1.313	1.500	2.063	2.000	1/4-28	7/16-20
5031 (-)	1.500	0.750	3/4-16	1.625	1.875	2.250	2.250	5/16-24	1/2-20

ORDERING INFORMATION:

HOW TO ORDER BASIC CYLINDERS
 A BASIC PART NUMBER consists of four digits followed by a dash number to indicate piston travel in increments of one inch.



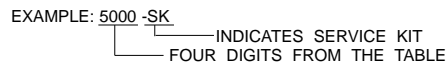
HOW TO ORDER CYLINDERS WITH INTERNAL ROD THREADS
 Add the suffix -IT to the BASIC PART NUMBER. THERE IS NO ADDED COST.



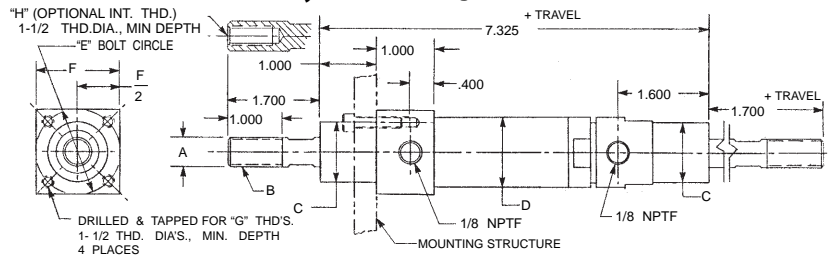
HOW TO ORDER CYLINDERS WITH STAINLESS STEEL PISTON RODS
 Add the suffix -SS to the BASIC PART NUMBER. Add 25% to the BASE PRICE.



HOW TO ORDER SERVICE KITS
 Add the suffix -SK to the FOUR DIGIT NUMBER.



CONFIGURATION C, Double Acting-Double Ended- Both Side Ports



PART NO. & TRAVEL	CYLINDER BORE	A ROD O.D.	B EXTERNAL ROD THD.	C NOSE DIA.	D BODY DIA.	E BOLT CIRCLE	F SQUARE	G MOUNTING SCREW SIZE	H INTERNAL ROD THD. (OPTION)
5032 (-)	0.656	0.375	3/8-24	0.875	0.875	1.250	1.250	10-32	1/4-28
5033 (-)	0.938	0.500	1/2-20	1.063	1.250	1.500	1.500	10-32	3/8-24
5034 (-)	1.188	0.625	5/8-18	1.313	1.500	2.063	2.000	1/4-28	7/16-20
5035 (-)	1.500	0.750	3/4-16	1.625	1.875	2.250	2.250	5/16-24	1/2-20

