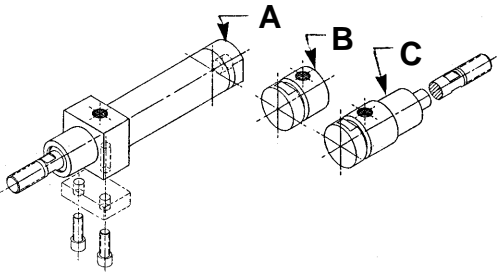


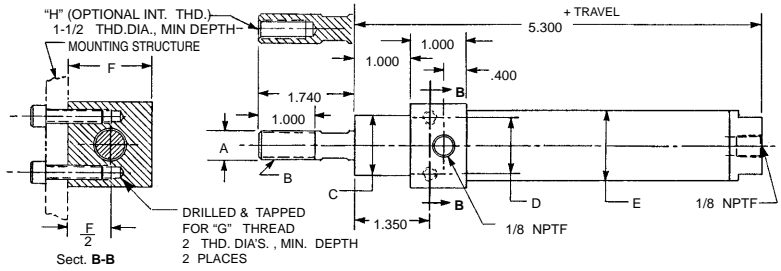
# Automation Basic Cylinders

## A•B•C® INTERNAL THREAD, FRONT BLOCK MOUNTED

### CONFIGURATIONS:



### CONFIGURATION A, Double Acting-Single Ended-Side & End Ports



PART NO. & TRAVEL	CYLINDER BORE	A ROD O.D.	B EXTERNAL ROD THD.	C NOSE DIA.	D BOLT CENTER	E BODY DIA.	F SQUARE	G MOUNTING SCREW SIZE	H INTERNAL ROD THD. (OPTION)
5012 (-)	0.656	0.375	3/8-24	0.875	0.813	0.875	1.250	10-32	1/4-28
5013 (-)	0.938	0.500	1/2-20	1.063	1.000	1.250	1.500	1/4-28	3/8-24
5014 (-)	1.188	0.625	5/8-18	1.313	1.250	1.500	2.000	5/16-24	7/16-20
5015 (-)	1.500	0.750	3/4-16	1.625	1.438	1.875	2.250	3/8-24	1/2-20

### MOUNTING STYLE:

INTERNALLY THREADED, FRONT BLOCK MOUNTED CYLINDERS makes for a simple yet rugged installation where mounting bolts come through holes in the mounting structure into threaded holes in the front block of the cylinder. Cylinders operate properly in any position.

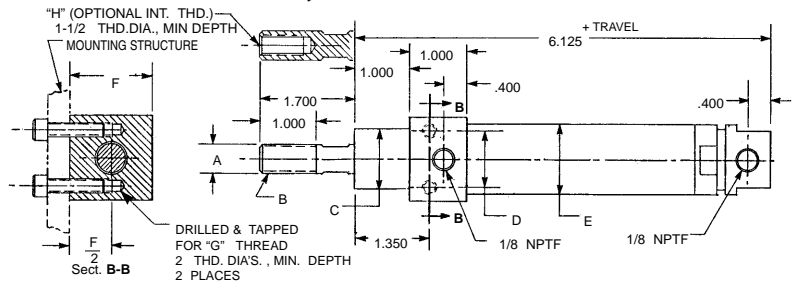
### SPECIFICATIONS:

**MATERIALS:** Aluminum Alloy, Bronze and Steel.  
**SERVICE:** Pneumatic and Hydraulic.  
**OPERATING PRESSURE RANGE:** Vacuum to 300 P.S.I.  
**OPERATING TEMPERATURE RANGE:** -20°F to 250°F.  
**SEALING ELEMENTS:** Standard "O" Rings.

### GENERAL NOTES:

All dimensions are nominal in U.S. CUSTOMARY units. Please consult the Factory for METRIC VERSIONS. A•B•C® is the registered trademark for MACK CORPORATION HEAVY DUTY AIR CYLINDERS. Developed and produced in the U.S.A. Please refer to page A20 for instructions in performing:  
 Angular Port Adjustment.  
 Complete Cylinder Servicing.  
 Rod Seal & Bushing Service without disturbing the cylinder mounting or supply lines.

### CONFIGURATION B, Double Acting-Single Ended- Both Side Ports



PART NO. & TRAVEL	CYLINDER BORE	A ROD O.D.	B EXTERNAL ROD THD.	C NOSE DIA.	D BOLT CENTER	E BODY DIA.	F SQUARE	G MOUNTING SCREW SIZE	H INTERNAL ROD THD. (OPTION)
5016 (-)	0.656	0.375	3/8-24	0.875	0.813	0.875	1.250	10-32	1/4-28
5017 (-)	0.938	0.500	1/2-20	1.063	1.000	1.250	1.500	1/4-28	3/8-24
5018 (-)	1.188	0.625	5/8-18	1.313	1.250	1.500	2.000	5/16-24	7/16-20
5019 (-)	1.500	0.750	3/4-16	1.625	1.438	1.875	2.250	3/8-24	1/2-20

### ORDERING INFORMATION:

**HOW TO ORDER BASIC CYLINDERS**  
 A BASIC PART NUMBER consists of four digits followed by a dash number to indicate piston travel in increments of one inch.

EXAMPLE: 5000-12  
 5000 BASIC PART NUMBER  
 12 TRAVEL IN INCHES  
 FOUR DIGITS FROM THE TABLE

**HOW TO ORDER CYLINDERS WITH INTERNAL ROD THREADS**  
 Add the suffix -IT to the BASIC PART NUMBER. THERE IS NO ADDED COST.

EXAMPLE: 5000-12-IT  
 5000 BASIC PART NUMBER  
 12 INTERNAL THREADS

**HOW TO ORDER CYLINDERS WITH STAINLESS STEEL PISTON RODS**

Add the suffix -SS to the BASIC PART NUMBER  
 Add 25% to the BASE PRICE.

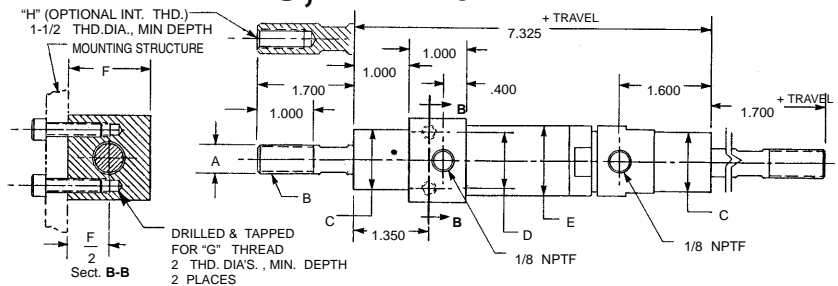
EXAMPLE: 5000-12-SS  
 5000 BASIC PART NUMBER  
 12 STAINLESS STEEL ROD OPTION

**HOW TO ORDER SERVICE KITS**

Add the suffix -SK to the FOUR DIGIT NUMBER.

EXAMPLE: 5000-SK  
 5000 INDICATES SERVICE KIT  
 FOUR DIGITS FROM THE TABLE

### CONFIGURATION C, Double Acting-Double Ended- Both Side Ports



PART NO. & TRAVEL	CYLINDER BORE	A ROD O.D.	B EXTERNAL ROD THD.	C NOSE DIA.	D BOLT CENTER	E BODY DIA.	F SQUARE	G MOUNTING SCREW SIZE	H INTERNAL ROD THD. (OPTION)
5020 (-)	0.656	0.375	3/8-24	0.875	0.813	0.875	1.250	10-32	1/4-28
5021 (-)	0.938	0.500	1/2-20	1.063	1.000	1.250	1.500	1/4-28	3/8-24
5022 (-)	1.188	0.625	5/8-18	1.313	1.250	1.500	2.000	5/16-24	7/16-20
5023 (-)	1.500	0.750	3/4-16	1.625	1.438	1.875	2.250	3/8-24	1/2-20

