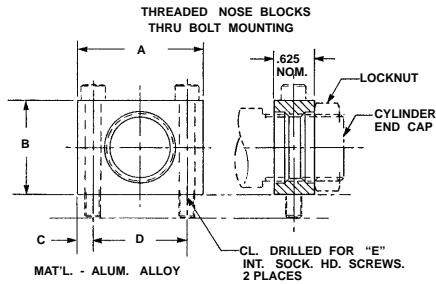
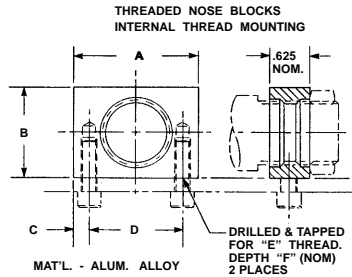


ACCESSORIES & service kits for Automation Basic Cylinders (Cont'd)

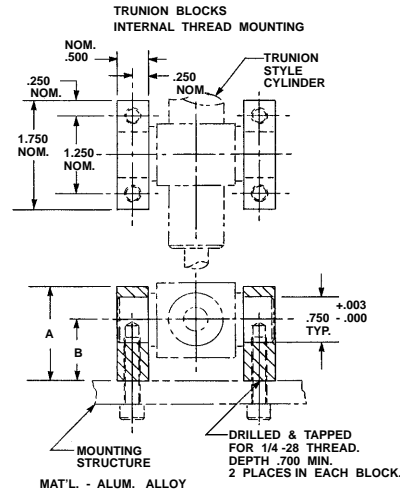
MOUNTING COMPONENTS CONT'D.



PART NO.	A (NOM)	B (NOM)	C (NOM)	D (NOM)	E THD.	CYLINDER BORE (REF)
4237	1.625	1.250	0.188	1.250	10-32	0.656
4238	2.000	1.500	0.250	1.500	1/4-28	0.938
4239	2.500	2.000	0.313	1.875	5/16-24	1.188
4240	3.000	2.250	0.375	2.250	3/8-24	1.500

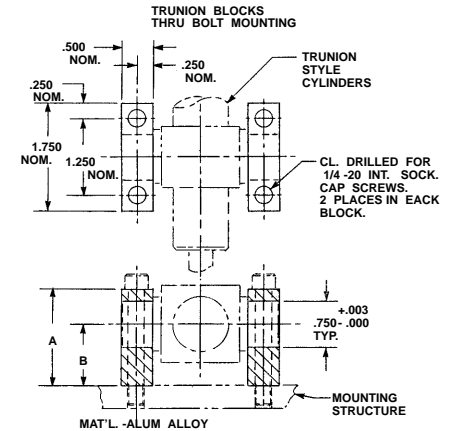


PART NO.	A (NOM)	B (NOM)	C (NOM)	D (NOM)	E THD.	F (NOM)	CYLINDER BORE (REF)
4241	1.625	1.250	0.188	1.250	10-32	0.500	0.656
4242	2.000	1.500	0.250	1.500	1/4-28	0.600	0.938
4243	2.500	2.000	0.313	1.875	5/16-24	0.700	1.188
4244	3.000	2.250	0.375	2.250	3/8-24	0.800	1.500



* PART NO.	A (NOM)	B (NOM)	CYLINDER BORE (REF)
4276	1.550	1.000	0.656
4277	1.750	1.200	0.938
4278	1.950	1.400	1.188
4279	2.150	1.600	1.500

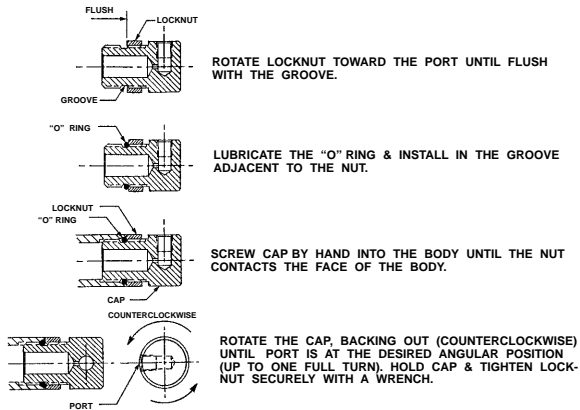
* TRUNION BLOCKS SUPPLIED IN PAIRS



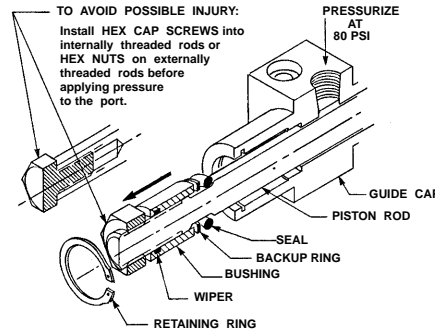
* PART NO.	A (NOM)	B (NOM)	CYLINDER BORE (REF)
4266	1.550	1.000	0.656
4267	1.750	1.200	0.938
4268	1.950	1.400	1.188
4269	2.150	1.600	1.500

* TRUNION BLOCKS SUPPLIED IN PAIRS

PORT ANGULAR ADJUSTMENT



ROD SEAL & BUSHING SERVICE



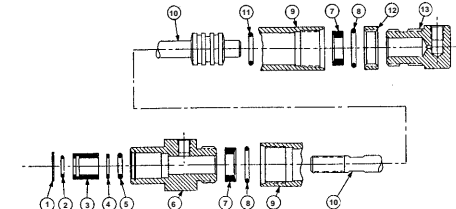
PROCEDURE FOR SERVICING ROD BUSHING & ROD SEAL (WITHOUT REMOVING THE CYLINDER)

DISASSEMBLY: (See view above)
REDUCE INTERNAL PRESSURE TO ZERO AT BOTH PORTS.
REMOVE RETAINING RING.
INSTALL HEX NUT OR HEX HEAD CAP SCREW TO ROD.
PRESSURIZE THE PORT.

REPLACEMENT:
ADD FILM OF LUBE TO ALL PARTS. (Supplied with kit)
INSTALL WIPER INTO BUSHING.
INSTALL SEAL, BACKUP RING & BUSHING IN THAT ORDER.
PUSH BUSHING HOME & INSTALL RETAINING RING.
MAKE SURE RETAINING RING IS SEATED PROPERLY.

COMPLETE CYLINDER SERVICE

SERVICE KITS WITH FACTORY APPROVED LUBRICANT ARE AVAILABLE. IF REQUIRED, PLEASE SPECIFY THE BASIC PART NUMBER FOLLOWED BY THE LETTERS "SK" AS A SUFFIX.



NOTE: SERVICE KIT PARTS ARE SHOWN IN SOLID SECTIONING.

- | | |
|------------------|---------------------|
| 1 RETAINING RING | 8 STATIC SEAL |
| 2 ROD WIPER | 9 BODY |
| 3 ROD BUSHING | 10 PISTON |
| 4 BACK UP RING | 11 PISTON HEAD SEAL |
| 5 ROD SEAL | 12 CAP LOCKNUT |
| 6 GUIDE CAP | 13 AFT CAP |
| 7 SHOCK ABSORBER | |

PROCEDURE FOR SERVICING AN ENTIRE CYLINDER

REMOVE BUSHING & ROD SEAL WITH TECHNIQUE SHOWN ON THIS SHEET.
CLAMP BODY SECTION BETWEEN A PAIR OF WOODEN BLOCKS.
REMOVE END CAPS WITH A WRENCH OR 1/8 PIPE NIPPLE THREADED INTO PORTS.
WASH PISTON, BODY & END CAPS IN NON-TOXIC SOLVENT AND DRY.
COAT SERVICE KIT PARTS & INTERNAL SURFACES WITH LUBE SUPPLIED WITH KIT.
ASSEMBLE INNERMOST PARTS, WORKING TOWARD ENDS.
TIGHTEN FIXED END CAP.
ASSEMBLE ADJUSTABLE END CAP & ALIGN PORT LOCATION AS SHOWN ON THIS SHEET.

IMPORTANT: RETAINING RINGS SUPPORT ONLY THE THRUST LOAD OF THE ROD SEAL, BUT MAKE SURE RETAINING RINGS ARE PROPERLY SEATED.

