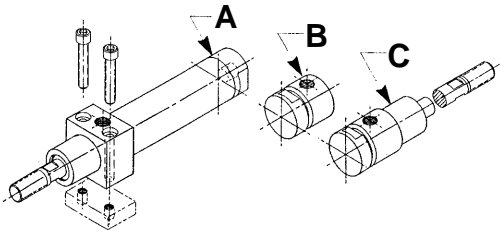


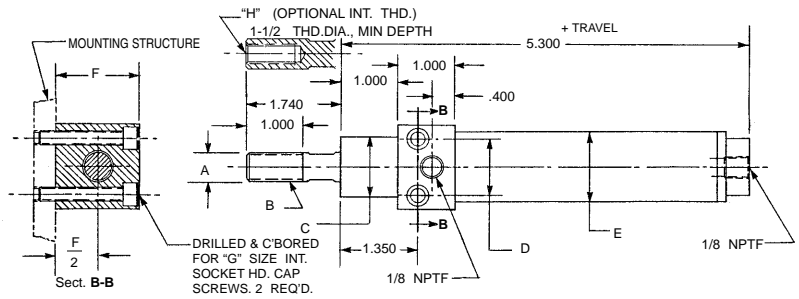
Automation Basic Cylinders

A•B•C® THRU BOLT, FRONT BLOCK MOUNTED

CONFIGURATIONS:



CONFIGURATION A, Double Acting-Single Ended-Side & End Ports



PART NO. & TRAVEL	CYLINDER BORE	A ROD O.D.	B EXTERNAL ROD THD.	C NOSE DIA.	D BOLT CENTER	E BODY DIA.	F SQUARE	G MOUNTING SCREW SIZE	H INTERNAL ROD THD. (OPTION)
5000 (-)	0.656	0.375	3/8-24	0.875	0.813	0.875	1.250	#10-32 x 1-1/4	1/4-28
5001 (-)	0.938	0.500	1/2-20	1.063	1.000	1.250	1.500	1/4-28 x 1-1/2	3/8-24
5002 (-)	1.188	0.625	5/8-18	1.313	1.250	1.500	2.000	5/16-24 x 2	7/16-20
5003 (-)	1.500	0.750	3/4-16	1.625	1.438	1.875	2.250	3/8-24 x 2-1/4	1/2-20

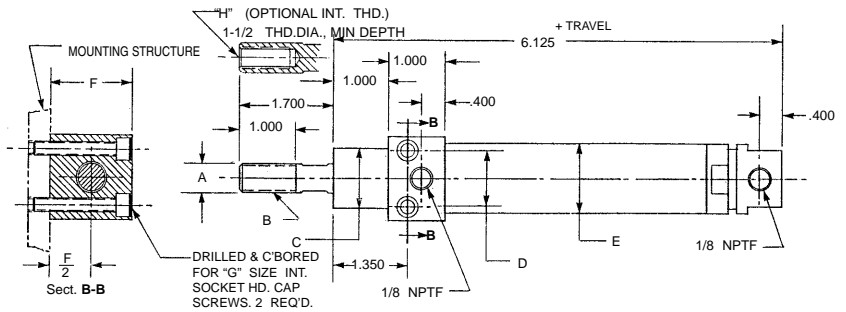
MOUNTING STYLE:

THRU BOLT, FRONT BLOCK MOUNTED CYLINDERS provide a simple, compact installation where bolts come from above into threaded holes in a structure. This mounting style is also convenient for clearance holes in the structure using standard bolts and nuts. Cylinders operate properly in any position.

SPECIFICATIONS:

MATERIALS: Aluminum Alloy, Bronze and Steel.
SERVICE: Pneumatic and Hydraulic.
OPERATING PRESSURE RANGE: Vacuum to 300 P.S.I.
OPERATING TEMPERATURE RANGE: -20°F to 250°F.
SEALING ELEMENTS: Standard "O" Rings.

CONFIGURATION B, Double Acting-Single Ended- Both Side Ports



PART NO. & TRAVEL	CYLINDER BORE	A ROD O.D.	B EXTERNAL ROD THD.	C NOSE DIA.	D BOLT CENTER	E BODY DIA.	F SQUARE	G MOUNTING SCREW SIZE	H INTERNAL ROD THD. (OPTION)
5004 (-)	0.656	0.375	3/8-24	0.875	0.813	0.875	1.250	#10-32 x 1-1/4	1/4-28
5005 (-)	0.938	0.500	1/2-20	1.063	1.000	1.250	1.500	1/4-28 x 1-1/2	3/8-24
5006 (-)	1.188	0.625	5/8-18	1.313	1.250	1.500	2.000	5/16-24 x 2	7/16-20
5007 (-)	1.500	0.750	3/4-16	1.625	1.438	1.875	2.250	3/8-24 x 2-1/4	1/2-20

GENERAL NOTES:

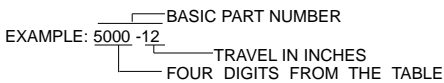
All dimensions are nominal in U.S. CUSTOMARY units. Please consult the Factory for METRIC VERSIONS. A•B•C® is the registered trademark for MACK CORPORATION HEAVY DUTY AIR CYLINDERS. Developed and produced in the U.S.A.

Please refer to page A20 for instructions in performing:

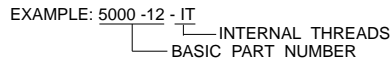
- Angular Port Adjustment.
- Complete Cylinder Servicing.
- Rod Seal & Bushing Service without disturbing the cylinder mounting or supply lines.

ORDERING INFORMATION:

HOW TO ORDER BASIC CYLINDERS
 A BASIC PART NUMBER consists of four digits followed by a dash number to indicate piston travel in increments of one inch.



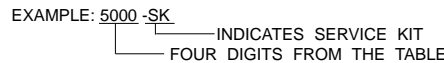
HOW TO ORDER CYLINDERS WITH INTERNAL ROD THREADS
 Add the suffix -IT to the BASIC PART NUMBER. THERE IS NO ADDED COST.



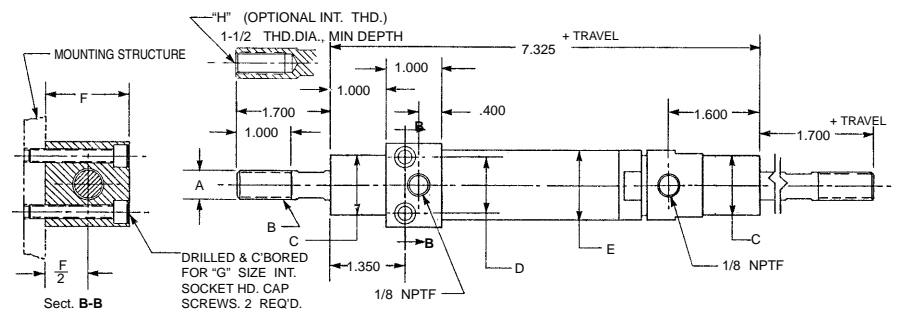
HOW TO ORDER CYLINDERS WITH STAINLESS STEEL PISTON RODS
 Add the suffix -SS to the BASIC PART NUMBER. Add 25% to the BASE PRICE.



HOW TO ORDER SERVICE KITS
 Add the suffix -SK to the FOUR DIGIT NUMBER.



CONFIGURATION C, Double Acting-Double Ended- Both Side Ports



PART NO. & TRAVEL	CYLINDER BORE	A ROD O.D.	B EXTERNAL ROD THD.	C NOSE DIA.	D BOLT CENTER	E BODY DIA.	F SQUARE	G MOUNTING SCREW SIZE	H INTERNAL ROD THD. (OPTION)
5008 (-)	0.656	0.375	3/8-24	0.875	0.813	0.875	1.250	#10-32 x 1-1/4	1/4-28
5009 (-)	0.938	0.500	1/2-20	1.063	1.000	1.250	1.500	1/4-28 x 1-1/2	3/8-24
5010 (-)	1.188	0.625	5/8-18	1.313	1.250	1.500	2.000	5/16-24 x 2	7/16-20
5011 (-)	1.500	0.750	3/4-16	1.625	1.438	1.875	2.250	3/8-24 x 2-1/4	1/2-20

