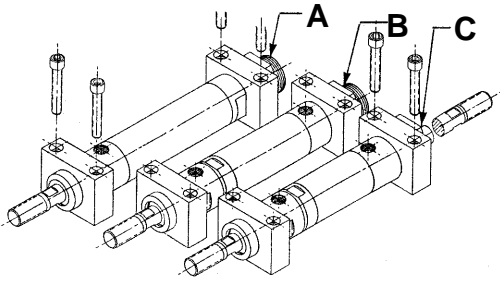


Automation Basic Cylinders

A•B•C® THREADED CAP ATTACHMENT
FORE AND AFT MOUNTED

CONFIGURATIONS:



MOUNTING STYLE:

THREADED CAP, FORE & AFT MOUNTED CYLINDERS are similar to those shown on DATA SHEET NO. 8052 but include an additional feature. This mounting style allows independent angular orientation of either port in relation to the mounting structure. Good thrust alignment and side load capability is inherent in this mounting style. Cylinders perform properly when mounted in any position.

SPECIFICATIONS:

MATERIALS: Aluminum Alloy, Bronze and Steel.
SERVICE: Pneumatic and Hydraulic.
OPERATING PRESSURE RANGE: Vacuum to 300 P.S.I.
OPERATING TEMPERATURE RANGE: -20°F to 250°F.
SEALING ELEMENTS: Standard "O" Rings.

GENERAL NOTES:

All dimensions are nominal in U.S. CUSTOMARY units. Please consult the Factory for METRIC VERSIONS. A•B•C® is the registered trademark for MACK CORPORATION HEAVY DUTY AIR CYLINDERS. Developed and produced in the U.S.A. Please refer to page A20 for instructions in performing:
Angular Port Adjustment.
Complete Cylinder Servicing.
Rod Seal & Bushing Service without disturbing the cylinder mounting or supply lines.

ORDERING INFORMATION:

HOW TO ORDER BASIC CYLINDERS
A BASIC PART NUMBER consists of four digits followed by a dash number to indicate piston travel in increments of one inch.

EXAMPLE: 5000-12
BASIC PART NUMBER
TRAVEL IN INCHES
FOUR DIGITS FROM THE TABLE

HOW TO ORDER CYLINDERS WITH INTERNAL ROD THREADS
Add the suffix -IT to the BASIC PART NUMBER. THERE IS NO ADDED COST.

EXAMPLE: 5000-12-IT
INTERNAL THREADS
BASIC PART NUMBER

HOW TO ORDER CYLINDERS WITH STAINLESS STEEL PISTON RODS

Add the suffix -SS to the BASIC PART NUMBER
Add 25% to the BASE PRICE.

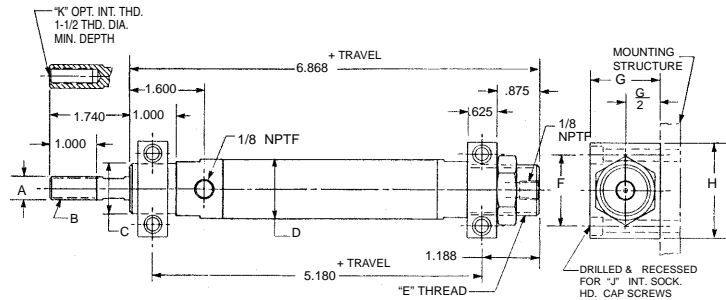
EXAMPLE: 5000-12-SS
STAINLESS STEEL ROD OPTION
BASIC PART NUMBER

HOW TO ORDER SERVICE KITS

Add the suffix -SK to the FOUR DIGIT NUMBER.

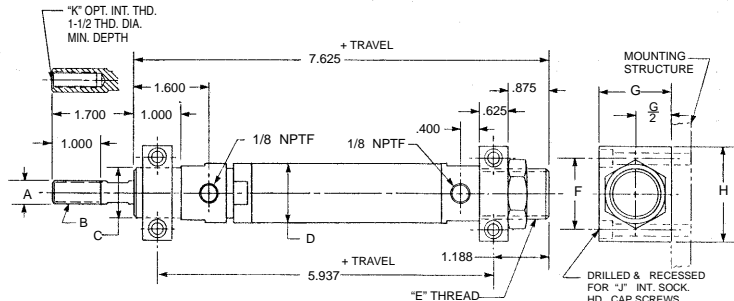
EXAMPLE: 5000-SK
INDICATES SERVICE KIT
FOUR DIGITS FROM THE TABLE

CONFIGURATION A, Double Acting-Single Ended-Side & End Ports



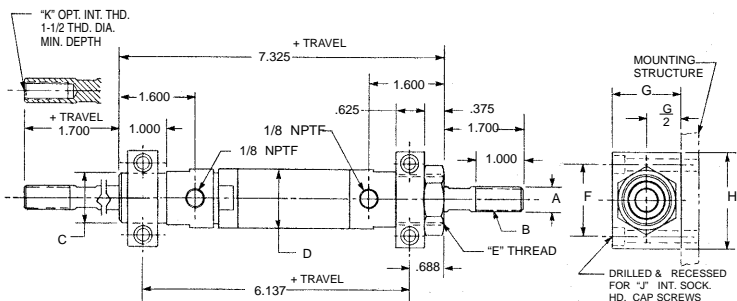
PART NO. & TRAVEL	CYLINDER BORE	A ROD O.D.	B EXTERNAL ROD THD.	C NOSE DIA.	D BODY DIA.	E THREAD	F BOLT CENTERS	G BLOCK HEIGHT	H BLOCK LENGTH	J MOUNTING BOLT SIZE	K INTERNAL ROD THD.
5156 (-)	0.656	0.375	3/8-24	0.875	0.875	7/8-14	1.250	1.250	1.750	10-32	1/4-28
5157 (-)	0.938	0.500	1/2-20	1.063	1.250	1-1/16-12	1.500	1.500	2.000	1/4-28	3/8-24
5158 (-)	1.188	0.625	5/8-18	1.313	1.500	1-5/16-12	1.875	2.000	2.500	5/16-24	7/16-20
5159 (-)	1.500	0.750	3/4-16	1.625	1.875	1-5/8-12	2.250	2.250	3.000	3/8-24	1/2-20

CONFIGURATION B, Double Acting-Single Ended-Both Side Ports



PART NO. & TRAVEL	CYLINDER BORE	A ROD O.D.	B EXTERNAL ROD THD.	C NOSE DIA.	D BODY DIA.	E THREAD	F BOLT CENTERS	G BLOCK HEIGHT	H BLOCK LENGTH	J MOUNTING BOLT SIZE	K INTERNAL ROD THD.
5160 (-)	0.656	0.375	3/8-24	0.875	0.875	7/8-14	1.250	1.250	1.750	10-32	1/4-28
5161 (-)	0.938	0.500	1/2-20	1.063	1.250	1-1/16-12	1.500	1.500	2.000	1/4-28	3/8-24
5162 (-)	1.188	0.625	5/8-18	1.313	1.500	1-5/16-12	1.875	2.000	2.500	5/16-24	7/16-20
5163 (-)	1.500	0.750	3/4-16	1.625	1.875	1-5/8-12	2.250	2.250	3.000	3/8-24	1/2-20

CONFIGURATION C, Double Acting-Double Ended-Both Side Ports



PART NO. & TRAVEL	CYLINDER BORE	A ROD O.D.	B EXTERNAL ROD THD.	C NOSE DIA.	D BODY DIA.	E THREAD	F BOLT CENTERS	G BLOCK HEIGHT	H BLOCK LENGTH	J MOUNTING BOLT SIZE	K INTERNAL ROD THD.
5164 (-)	0.656	0.375	3/8-24	0.875	0.875	7/8-14	1.250	1.250	1.750	10-32	1/4-28
5165 (-)	0.938	0.500	1/2-20	1.063	1.250	1-1/16-12	1.500	1.500	2.000	1/4-28	3/8-24
5166 (-)	1.188	0.625	5/8-18	1.313	1.500	1-5/16-12	1.875	2.000	2.500	5/16-24	7/16-20
5167 (-)	1.500	0.750	3/4-16	1.625	1.875	1-5/8-12	2.250	2.250	3.000	3/8-24	1/2-20



DATA SHEET 8054
© 2006 MACK CORPORATION