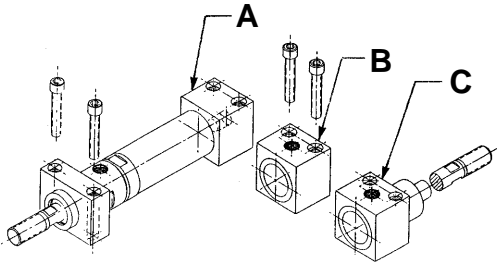


# Automation Basic Cylinders

**A•B•C®** THRU BOLT ATTACHMENT  
FORE AND AFT MOUNTED

## CONFIGURATIONS:



## MOUNTING STYLE:

FORE & AFT MOUNTED CYLINDERS WITH THRU BOLT ATTACHMENT provide a rugged support for long travels. Thrust alignment is maintained and deflection from side load is held to a minimum. A pair of thru bolts pass thru both end caps into the mounting structure. The mounting structure may contain threaded holes for direct attachment or clearance holes for use with standard bolts & nuts. Cylinders operate properly when mounted in any position.

## SPECIFICATIONS:

**MATERIALS:** Aluminum Alloy, Bronze and Steel.  
**SERVICE:** Pneumatic and Hydraulic.  
**OPERATING PRESSURE RANGE:** Vacuum to 300 P.S.I.  
**OPERATING TEMPERATURE RANGE:** -20°F to 250°F.  
**SEALING ELEMENTS:** Standard "O" Rings.

## GENERAL NOTES:

All dimensions are nominal in U.S. CUSTOMARY units. Please consult the Factory for METRIC VERSIONS. A•B•C® is the registered trademark for MACK CORPORATION HEAVY DUTY AIR CYLINDERS. Developed and produced in the U.S.A. Please refer to page A20 for instructions in performing:

- Angular Port Adjustment.
- Complete Cylinder Servicing.
- Rod Seal & Bushing Service without disturbing the cylinder mounting or supply lines.

## ORDERING INFORMATION:

**HOW TO ORDER BASIC CYLINDERS**  
A BASIC PART NUMBER consists of four digits followed by a dash number to indicate piston travel in increments of one inch.

EXAMPLE: 5000 -12  
BASIC PART NUMBER  
TRAVEL IN INCHES  
FOUR DIGITS FROM THE TABLE

**HOW TO ORDER CYLINDERS WITH INTERNAL THREADS**  
Add the suffix -IT to the BASIC PART NUMBER. THERE IS NO ADDED COST.

EXAMPLE: 5000 -12 -IT  
INTERNAL THREADS  
BASIC PART NUMBER

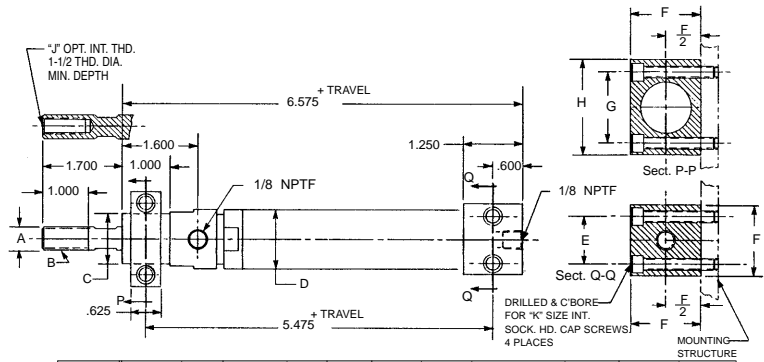
**HOW TO ORDER CYLINDERS WITH STAINLESS STEEL PISTON RODS**  
Add the suffix -SS to the BASIC PART NUMBER. Add 25% to the BASE PRICE.

EXAMPLE: 5000 -12 -SS  
STAINLESS STEEL ROD OPTION  
BASIC PART NUMBER

**HOW TO ORDER SERVICE KITS**  
Add the suffix -SK to the FOUR DIGIT NUMBER.

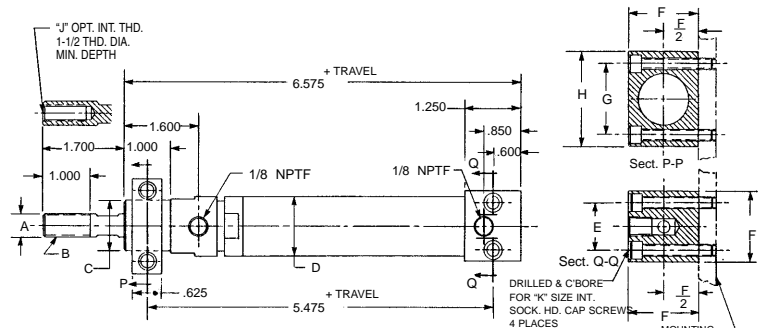
EXAMPLE: 5000 -SK  
INDICATES SERVICE KIT  
FOUR DIGITS FROM THE TABLE

## CONFIGURATION A, Double Acting-Single Ended-Side & End Ports



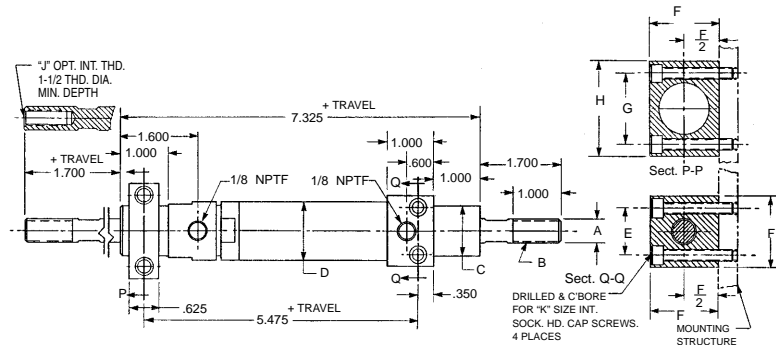
PART NO. & TRAVEL	CYLINDER BORE	A ROD O.D.	B EXTERNAL ROD THD.	C NOSE DIA.	D BODY DIA.	E BOLT CENTER	F BLOCK HEIGHT	G BOLT CENTERS	H BLOCK LENGTH	J INTERNAL ROD THD.	K MOUNTING SCREW SIZE
5132 (-)	0.656	0.375	3/8-24	0.875	0.875	0.813	1.250	1.250	1.625	1/4-28	10-32
5133 (-)	0.938	0.500	1/2-20	1.063	1.250	1.000	1.500	1.500	2.000	3/8-24	1/4-28
5134 (-)	1.188	0.625	5/8-18	1.313	1.500	1.250	2.000	1.875	2.500	7/16-20	5/16-24
5135 (-)	1.500	0.750	3/4-16	1.625	1.875	1.438	2.250	2.250	3.000	1/2-20	3/8-24

## CONFIGURATION B, Double Acting-Single Ended-Both Side Ports



PART NO. & TRAVEL	CYLINDER BORE	A ROD O.D.	B EXTERNAL ROD THD.	C NOSE DIA.	D BODY DIA.	E BOLT CENTER	F BLOCK HEIGHT	G BOLT CENTERS	H BLOCK LENGTH	J INTERNAL ROD THD.	K MOUNTING SCREW SIZE
5136 (-)	0.656	0.375	3/8-24	0.875	0.875	0.813	1.250	1.250	1.625	1/4-28	10-32
5137 (-)	0.938	0.500	1/2-20	1.063	1.250	1.000	1.500	1.500	2.000	3/8-24	1/4-28
5138 (-)	1.188	0.625	5/8-18	1.313	1.500	1.250	2.000	1.875	2.500	7/16-20	5/16-24
5139 (-)	1.500	0.750	3/4-16	1.625	1.875	1.438	2.250	2.250	3.000	1/2-20	3/8-24

## CONFIGURATION C, Double Acting-Double Ended-Both Side Ports



PART NO. & TRAVEL	CYLINDER BORE	A ROD O.D.	B EXTERNAL ROD THD.	C NOSE DIA.	D BODY DIA.	E BOLT CENTER	F BLOCK HEIGHT	G BOLT CENTERS	H BLOCK LENGTH	J INTERNAL ROD THD.	K MOUNTING SCREW SIZE
5140 (-)	0.656	0.375	3/8-24	0.875	0.875	0.813	1.250	1.250	1.625	1/4-28	10-32
5141 (-)	0.938	0.500	1/2-20	1.063	1.250	1.000	1.500	1.500	2.000	3/8-24	1/4-28
5142 (-)	1.188	0.625	5/8-18	1.313	1.500	1.250	2.000	1.875	2.500	7/16-20	5/16-24
5143 (-)	1.500	0.750	3/4-16	1.625	1.875	1.438	2.250	2.250	3.000	1/2-20	3/8-24

