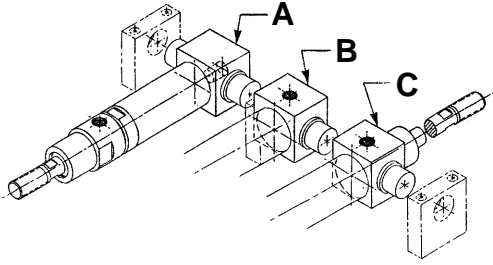


Automation Basic Cylinders

A•B•C® AFT TRUNION MOUNTED

CONFIGURATIONS:



MOUNTING STYLE:

AFT TRUNION MOUNTED CYLINDERS provide a swing axis at the aft end of a cylinder and reduce overall length when compared to conventional yoke or lug mounted versions. Aft trunion mounting may permit a significant reduction in the overall size of the user's mounting structure. Cylinders operate in any position.

SPECIFICATIONS:

MATERIALS: Aluminum Alloy, Bronze and Steel.
SERVICE: Pneumatic and Hydraulic.
OPERATING PRESSURE RANGE: Vacuum to 300 P.S.I.
OPERATING TEMPERATURE RANGE: -20°F to 250°F.
SEALING ELEMENTS: Standard "O" Rings.

GENERAL NOTES:

All dimensions are nominal in U.S. CUSTOMARY units. Please consult the Factory for METRIC VERSIONS. A•B•C® is the registered trademark for MACK CORPORATION HEAVY DUTY AIR CYLINDERS. Developed and produced in the U.S.A. Please refer to page A20 for instructions in performing:

- Angular Port Adjustment.
- Complete Cylinder Servicing.
- Rod Seal & Bushing Service without disturbing the cylinder mounting or supply lines.

ORDERING INFORMATION:

HOW TO ORDER BASIC CYLINDERS
 A BASIC PART NUMBER consists of four digits followed by a dash number to indicate piston travel in increments of one inch.

EXAMPLE: 5000-12
 — BASIC PART NUMBER
 — TRAVEL IN INCHES
 — FOUR DIGITS FROM THE TABLE

HOW TO ORDER CYLINDERS WITH INTERNAL ROD THREADS
 Add the suffix -IT to the BASIC PART NUMBER. THERE IS NO ADDED COST.

EXAMPLE: 5000-12-IT
 — INTERNAL THREADS
 — BASIC PART NUMBER

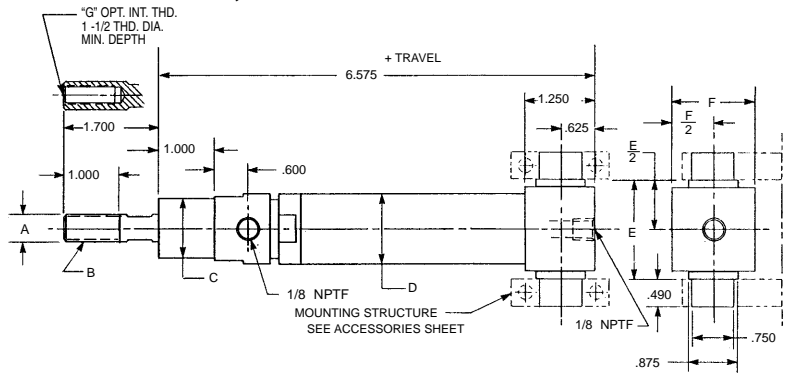
HOW TO ORDER CYLINDERS WITH STAINLESS STEEL PISTON RODS
 Add the suffix -SS to the BASIC PART NUMBER. Add 25% to the BASE PRICE.

EXAMPLE: 5000-12-SS
 — STAINLESS STEEL ROD OPTION
 — BASIC PART NUMBER

HOW TO ORDER SERVICE KITS
 Add the suffix -SK to the FOUR DIGIT NUMBER.

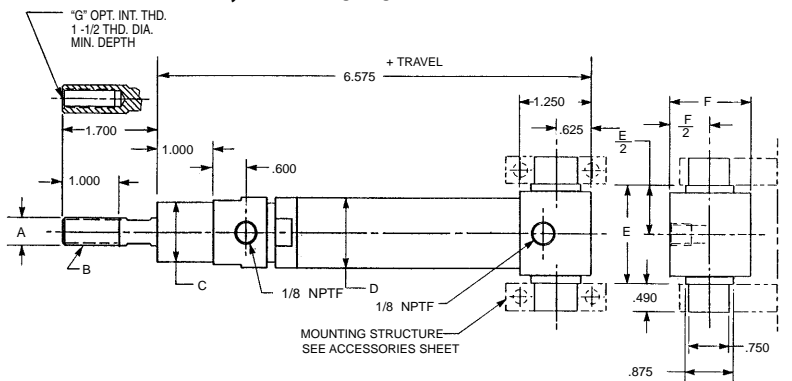
EXAMPLE: 5000-SK
 — INDICATES SERVICE KIT
 — FOUR DIGITS FROM THE TABLE

CONFIGURATION A, Double Acting-Single Ended-Side & End Ports



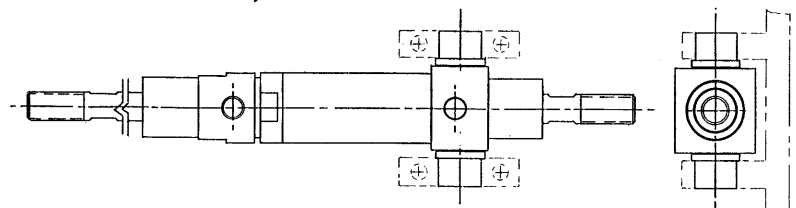
| PART NO. & TRAVEL | CYLINDER BORE | A ROD DIA. | B EXTERNAL ROD THD. | C NOSE DIA. | D BODY DIA. | E TRUNION SHOULDER | F SQUARE | G INTERNAL ROD THD. |
|-------------------|---------------|------------|---------------------|-------------|-------------|--------------------|----------|---------------------|
| 5116 (-) | 0.656 | 0.375 | 3/8-24 | 0.875 | 0.875 | 1.550 | 1.250 | 1/4-28 |
| 5117 (-) | 0.938 | 0.500 | 1/2-20 | 1.063 | 1.250 | 1.800 | 1.500 | 3/8-24 |
| 5118 (-) | 1.188 | 0.625 | 5/8-18 | 1.313 | 1.500 | 2.300 | 2.000 | 7/16-20 |
| 5119 (-) | 1.500 | 0.750 | 3/4-16 | 1.625 | 1.875 | 2.550 | 2.250 | 1/2-20 |

CONFIGURATION B, Double Acting-Single Ended- Both Side Ports



| PART NO. & TRAVEL | CYLINDER BORE | A ROD DIA. | B EXTERNAL ROD THD. | C NOSE DIA. | D BODY DIA. | E TRUNION SHOULDER | F SQUARE | G INTERNAL ROD THD. |
|-------------------|---------------|------------|---------------------|-------------|-------------|--------------------|----------|---------------------|
| 5120 (-) | 0.656 | 0.375 | 3/8-24 | 0.875 | 0.875 | 1.550 | 1.250 | 1/4-28 |
| 5121 (-) | 0.938 | 0.500 | 1/2-20 | 1.063 | 1.250 | 1.800 | 1.500 | 3/8-24 |
| 5122 (-) | 1.188 | 0.625 | 5/8-18 | 1.313 | 1.500 | 2.300 | 2.000 | 7/16-20 |
| 5123 (-) | 1.500 | 0.750 | 3/4-16 | 1.625 | 1.875 | 2.550 | 2.250 | 1/2-20 |

CONFIGURATION C, Double Acting-Double Ended- Both Side Ports



NOTE: SAME AS CONFIGURATION "C" ON DATA SHEET 8043 WHEN MOUNTED END FOR END.
 PLEASE REFER TO PART NUMBERS 5056 (-), 5057 (-), 5058 (-) & 5059 (-).



DATA SHEET 8050
 © 2006 MACK CORPORATION