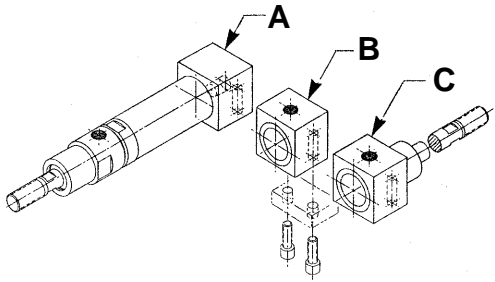


Automation Basic Cylinders

A•B•C® INTERNAL THREAD, AFT BLOCK MOUNTED

CONFIGURATIONS:



MOUNTING STYLE:

INTERNALLY THREADED, AFT BLOCK MOUNTED CYLINDERS are for rear mounted installations where bolts pass thru clearance holes in the user's structure into threaded holes in a cylinder. Cylinders operate properly in any position.

SPECIFICATIONS:

MATERIALS: Aluminum Alloy, Bronze and Steel.
SERVICE: Pneumatic and Hydraulic.
OPERATING PRESSURE RANGE: Vacuum to 300 P.S.I.
OPERATING TEMPERATURE RANGE: -20°F to 250°F.
SEALING ELEMENTS: Standard "O" Rings.

GENERAL NOTES:

All dimensions are nominal in U.S. CUSTOMARY units. Please consult the Factory for METRIC VERSIONS. A•B•C® is the registered trademark for MACK CORPORATION HEAVY DUTY AIR CYLINDERS. Developed and produced in the U.S.A. Please refer to page A20 for instructions in performing:
 Angular Port Adjustment.
 Complete Cylinder Servicing.
 Rod Seal & Bushing Service without disturbing the cylinder mounting or supply lines.

ORDERING INFORMATION:

HOW TO ORDER BASIC CYLINDERS
 A BASIC PART NUMBER consists of four digits followed by a dash number to indicate piston travel in increments of one inch.

EXAMPLE: 5000 -12
 _____ BASIC PART NUMBER
 _____ TRAVEL IN INCHES
 _____ FOUR DIGITS FROM THE TABLE

HOW TO ORDER CYLINDERS WITH INTERNAL ROD THREADS
 Add the suffix -IT to the BASIC PART NUMBER. THERE IS NO ADDED COST.

EXAMPLE: 5000 -12 -IT
 _____ INTERNAL THREADS
 _____ BASIC PART NUMBER

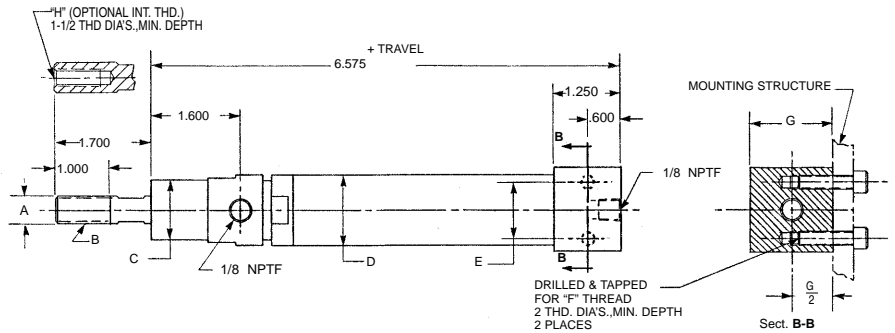
HOW TO ORDER CYLINDERS WITH STAINLESS STEEL PISTON RODS

Add the suffix -SS to the BASIC PART NUMBER
 Add 25% to the BASE PRICE.
 EXAMPLE: 5000 -12 -SS
 _____ STAINLESS STEEL ROD OPTION
 _____ BASIC PART NUMBER

HOW TO ORDER SERVICE KITS

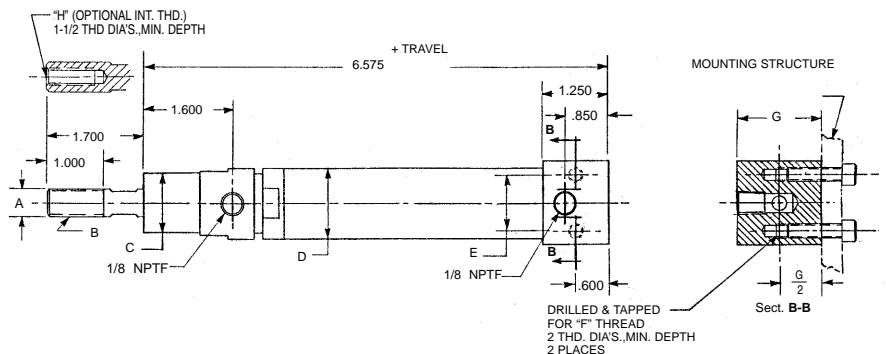
Add the suffix -SK to the FOUR DIGIT NUMBER.
 EXAMPLE: 5000 -SK
 _____ INDICATES SERVICE KIT
 _____ FOUR DIGITS FROM THE TABLE

CONFIGURATION A, Double Acting-Single Ended-Side & End Ports



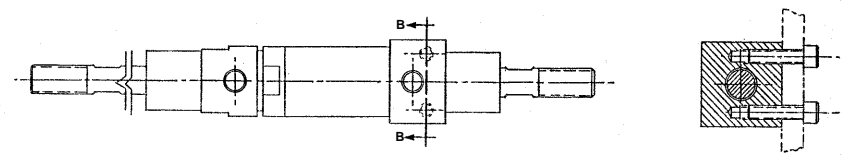
PART NO. & TRAVEL	CYLINDER BORE	A ROD DIA.	B EXTERNAL ROD THD.	C NOSE DIA.	D BODY DIA.	E BOLT CENTER	F MOUNTING SCREW SIZE	G SQUARE	H INTERNAL ROD THD.
5092 (-)	0.656	0.375	3/8 -24	0.875	0.875	0.813	10-32	1.250	1/4 -28
5093 (-)	0.938	0.500	1/2 -20	1.063	1.250	1.000	1/4 -28	1.500	3/8 -24
5094 (-)	1.188	0.625	5/8 -18	1.313	1.500	1.250	5/16 -24	2.000	7/16 -20
5095 (-)	1.500	0.750	3/4 -16	1.625	1.875	1.438	3/8 -24	2.250	1/2 -20

CONFIGURATION B, Double Acting-Single Ended- Both Side Ports



PART NO. & TRAVEL	CYLINDER BORE	A ROD DIA.	B EXTERNAL ROD THD.	C NOSE DIA.	D BODY DIA.	E BOLT CENTER	F MOUNTING SCREW SIZE	G SQUARE	H INTERNAL ROD THD.
5096 (-)	0.656	0.375	3/8 -24	0.875	0.875	0.813	10-32	1.250	1/4 -28
5097 (-)	0.938	0.500	1/2 -20	1.063	1.250	1.000	1/4 -28	1.500	3/8 -24
5098 (-)	1.188	0.625	5/8 -18	1.313	1.500	1.250	5/16 -24	2.000	7/16 -20
5099 (-)	1.500	0.750	3/4 -16	1.625	1.875	1.438	3/8 -24	2.250	1/2 -20

CONFIGURATION C, Double Acting-Double Ended- Both Side Ports



NOTE: SAME AS CONFIGURATION "C" ON DATA SHEET 8040 WHEN MOUNTED END FOR END. PLEASE REFER TO PART NUMBERS 5020 (-), 5021 (-), 5022 (-) & 5023 (-).

